

Luminaire Schedule							
Symbol	Qty	Label	Arrangement	LMF	Lum. Lumens	Lum. Watts	Part Number
	9	2ME-L	SINGLE	1.010	14575	136	RSWL-A-HT-2ME-14L-30K7-UL-GY-N
	8	3ME-L	SINGLE	1.010	14575	136	RSWL-A-HT-3ME-14L-30K7-UL-GY-N

Calculation Summary (Footcandles calculated using predicted lumen values @ 50K hrs of operation)						
Label	Units	Avg	Max	Min	Avg/Min	Max/Min
Paved Parking	Fc	2.11	5.4	0.5	4.22	10.80

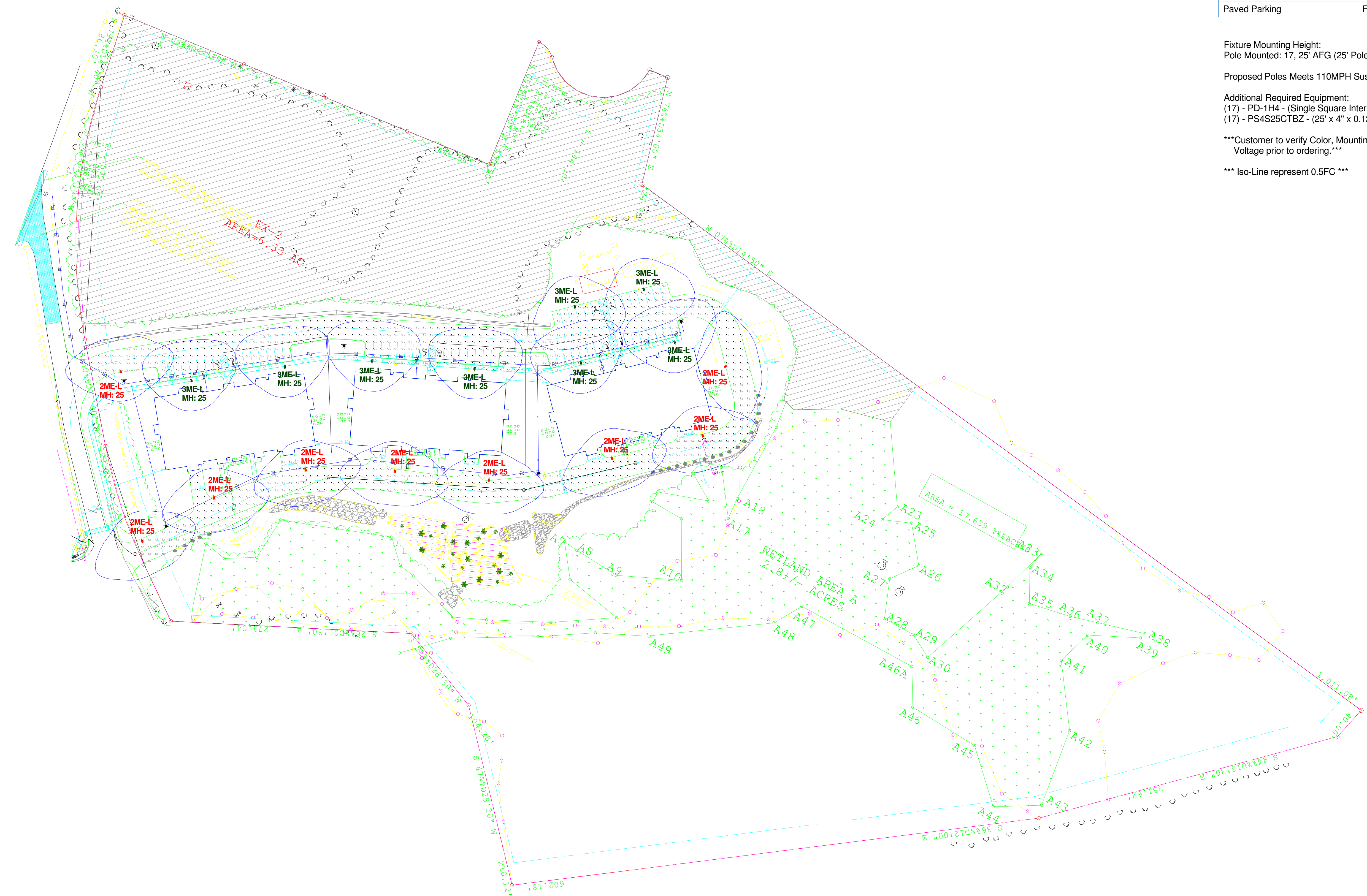
Fixture Mounting Height:
Pole Mounted: 17, 25' AFG (25' Pole + 0.0' Base)

Proposed Poles Meets 110MPH Sustained Winds.

Additional Required Equipment:
(17) - PD-1H4 - (Single Square Internal Mount Horizontal Tenon)
(17) - PS4S25CTBZ - (25' x 4" x 0.125", Steel Square Pole, Tenon Mount)

Customer to verify Color, Mounting, Fixture Location and Voltage prior to ordering.

*** Iso-Line represent 0.5FC ***



illumination results shown on this lighting design are based on project parameters provided to Cree, Inc. used in conjunction with luminaire test procedures conducted under laboratory conditions. Actual project conditions differing from these design parameters may affect field results. The customer is responsible for verifying dimensional accuracy along with compliance with any applicable electrical, lighting, or energy code.

Project Name: Heritage Hills - 2832 Rosendale Rd., Schenectady, NY 12309

SR-34767 || Footcandles calculated at grade || Filename: 181227HH1CJW.AGI

Layout By: Collin Witherow
Date: 12/27/2018

