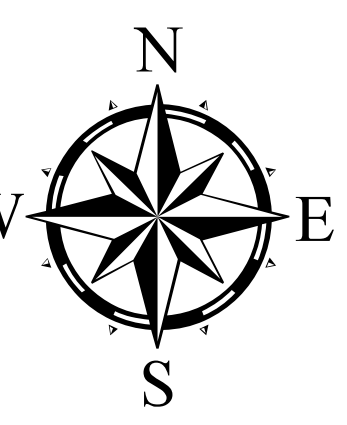
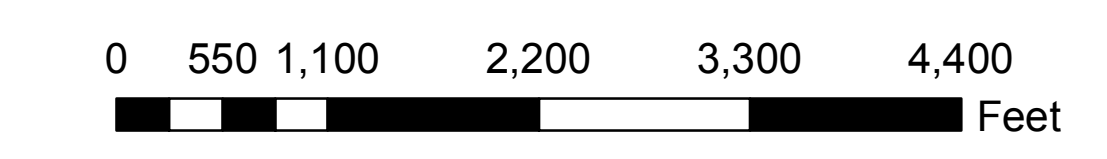
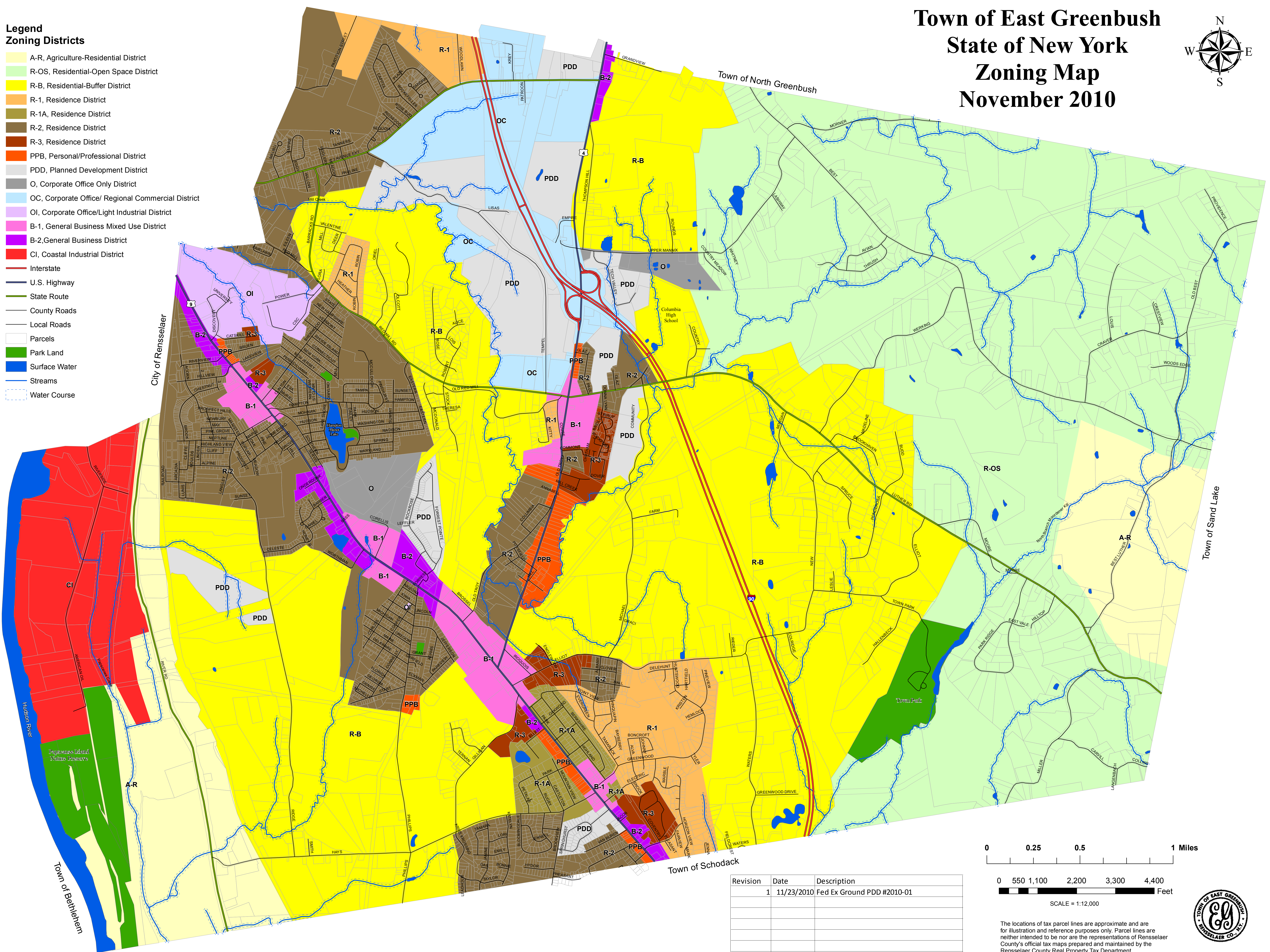


# Town of East Greenbush State of New York Zoning Map November 2010



## Legend

- ### Zoning Districts
- A-R, Agriculture-Residential District
  - R-OS, Residential-Open Space District
  - R-B, Residential-Buffer District
  - R-1, Residence District
  - R-1A, Residence District
  - R-2, Residence District
  - R-3, Residence District
  - PPB, Personal/Professional District
  - PDD, Planned Development District
  - O, Corporate Office Only District
  - OC, Corporate Office/ Regional Commercial District
  - OI, Corporate Office/Light Industrial District
  - B-1, General Business Mixed Use District
  - B-2, General Business District
  - CI, Coastal Industrial District
- Interstate
  - U.S. Highway
  - State Route
  - County Roads
  - Local Roads
  - Parcels
  - Park Land
  - Surface Water
  - Streams
  - Water Course



SCALE = 1:12,000

Revision	Date	Description
1	11/23/2010	Fed Ex Ground PDD #2010-01

The locations of tax parcel lines are approximate and are for illustration and reference purposes only. Parcel lines are neither intended to be nor are the representations of Rensselaer County's official tax maps prepared and maintained by the Rensselaer County Real Property Tax Department.

