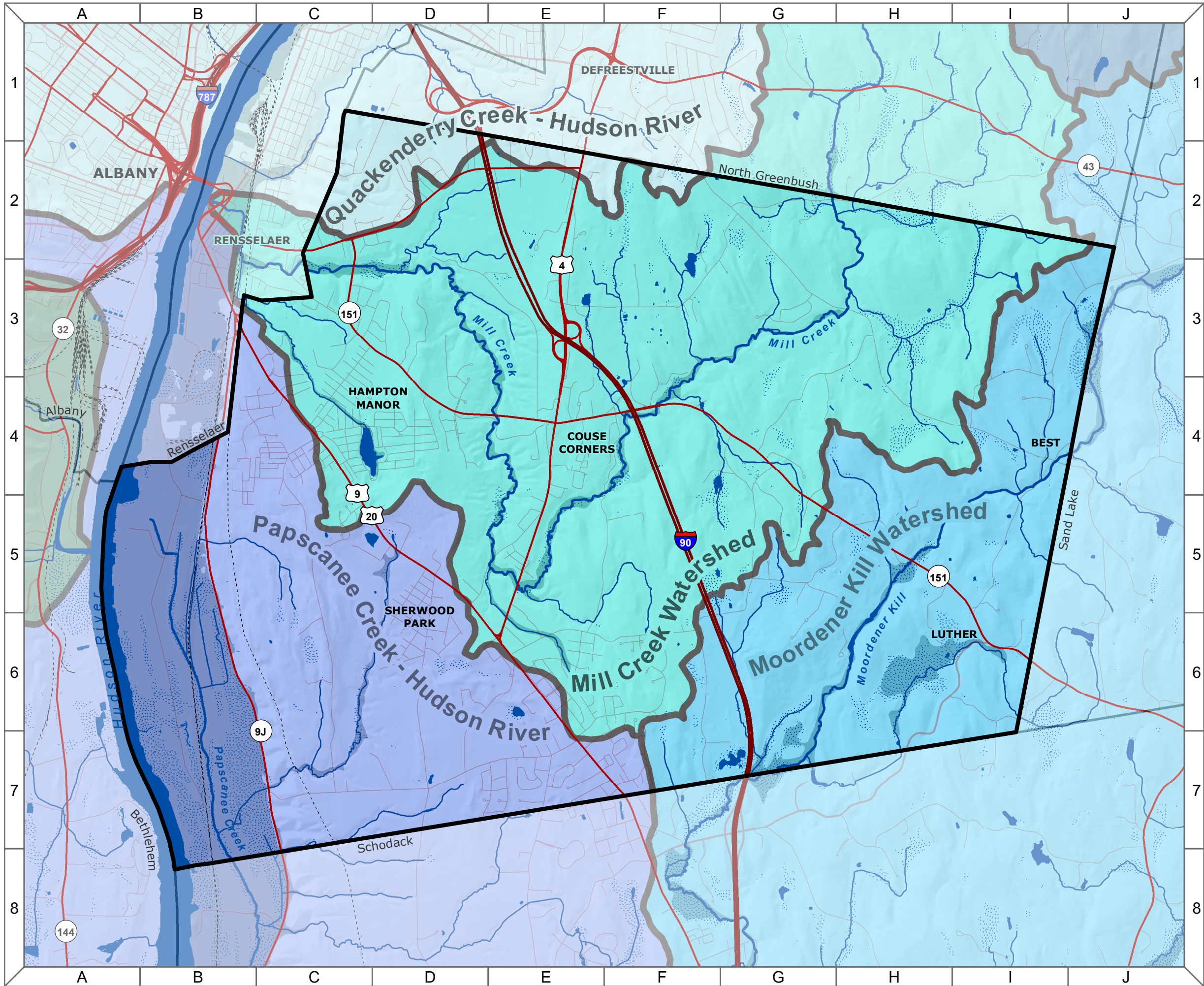


Town of East Greenbush Natural Resources Inventory

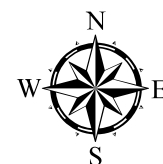
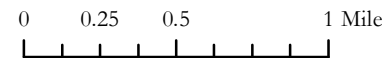
10. Streams and Watersheds



Map Legend

- Watersheds**
 - Mill Creek Watershed
 - Moordener Kill Watershed
 - Papscanee Creek/Hudson River Watershed
 - Rensselaer Creek/Hudson River Watershed
- Hydrology**
 - Open Water
 - Wetland
 - River/Stream
- Roads**
 - Interstate
 - State/US Highway
 - Local Street
 - Railroad
- Municipality**

Scale: 1:40,000



Data Sources: *Watersheds:* National Hydrography Dataset: NYS DEC and US Geological Survey (March 2017). | *Roadways:* ESRI North American Detailed Streets (2010). | *Railroads:* NYS DOT (May 2013). | *Towns:* NYS GIS Program Office (January 2017). | *Elevation:* NYS DEC and U.S. Geological Survey (date unknown). | *Rivers/Streams:* National Hydrography Dataset: NYS DEC and US Geological Survey (March 2017). | *Wetlands:* US Fish and Wildlife Service (2012) and NYS DEC (2013). **Note:** This map is intended for general planning and education purposes and is not a substitute for site-level surveys. It relies upon public data sources that may contain errors or omissions. Town of East Greenbush Natural Resources Inventory maps were completed with technical assistance from Cornell University, with funding from the NYS Environmental Protection Fund through the NYS DEC Hudson River Estuary Program. <http://hudson.dnr.cals.cornell.edu> Map by Andrew Varuzzo, 2018.