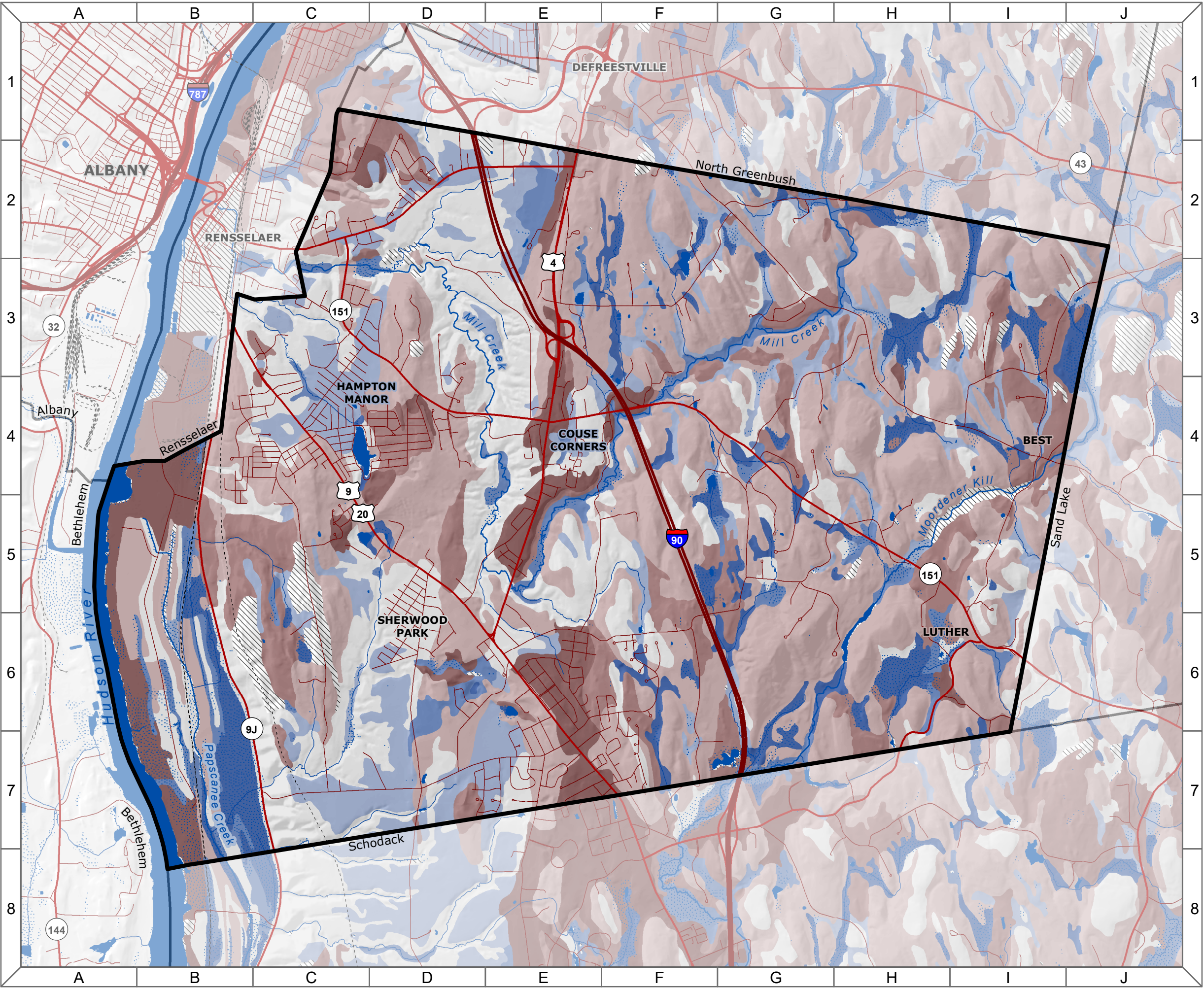


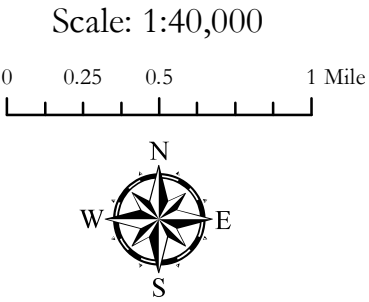
Town of East Greenbush
Natural Resources Inventory

8. Soil Drainage



Map Legend

- Soil Drainage Classes**
- Excessively drained
 - Somewhat excessively drained
 - Well drained
 - Moderately well drained
 - Somewhat poorly drained
 - Poorly drained
 - Very poorly drained
 - Unclassified
- Roads**
- Interstate
 - State/US Highway
 - Local Street
 - Railroad
- Hydrology**
- Open Water
 - Wetland
 - River/Stream
 - Municipality



Data Sources: *Soil Unit Drainage Classes:* Albany County SSURGO: USDA Natural Resources Conservation Service (1994). | *Roadways:* ESRI North American Detailed Streets (2010). | *Railroads:* NYS DOT (May 2013). | *Towns:* NYS GIS Program Office (January 2017). | *Elevation:* NYS DEC and U.S. Geological Survey (date unknown). | *Rivers/Streams:* National Hydrography Dataset: NYS DEC and US Geological Survey (March 2017). | *Wetlands:* US Fish and Wildlife Service (2012) and NYS DEC (2013). **Note:** This map is intended for general planning and education purposes and is not a substitute for site-level surveys. It relies upon public data sources that may contain errors or omissions. Town of East Greenbush Natural Resources Inventory maps were completed with technical assistance from Cornell University, with funding from the NYS Environmental Protection Fund through the NYS DEC Hudson River Estuary Program. <http://hudson.dnr.cals.cornell.edu> Map by Andrew Varuzzo, 2018.