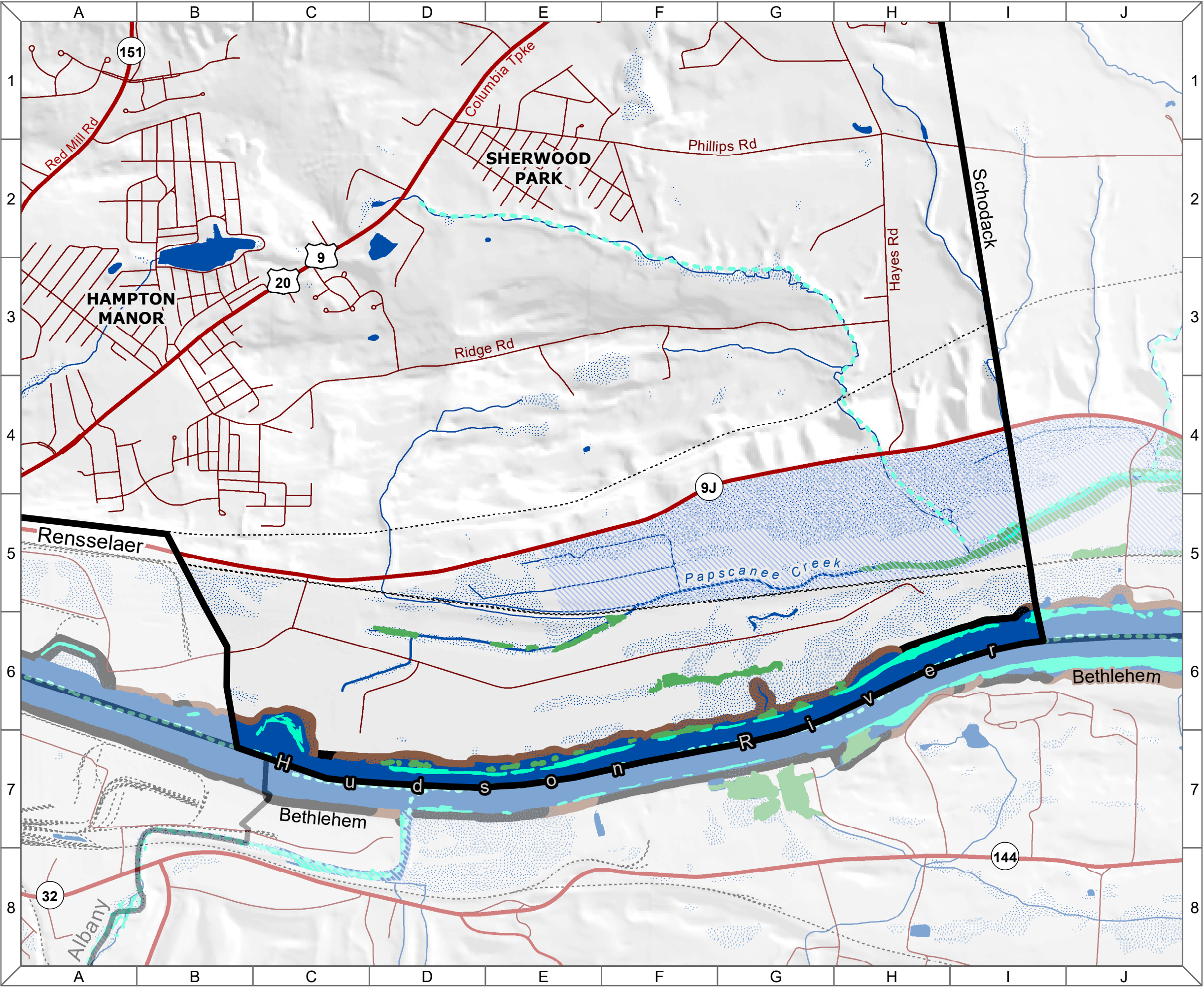


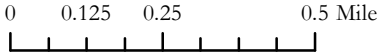
Town of East Greenbush
Natural Resources Inventory
18. Coastal Habitats



Map Legend

- Coastal Habitats**
- Submerged Aquatic Vegetation
 - Tidal Wetlands
 - Significant Coastal Fish & Wildlife Habitat
 - Streams with Migratory Fish
- Shoreline Status**
- Natural¹
 - Hard Engineered²
- Hydrology**
- Open Water
 - Wetland
 - River/ Stream
- Roads**
- State/US Highway
 - Local Street
 - Railroad
- Municipality**

Scale: 1:20,000



1. Riverbank lined with sand, mud, natural rock or woody vegetation.
2. Riverbank lined with man-made timber, metal, concrete or rock.

Data Sources: *Submerged Aquatic Vegetation and Tidal Wetlands:* Cornell Institute for Resource Information Sciences, NYS DEC and Hudson River National Estuarine Research Reserve (2014/2007). | *Significant Coastal Wildlife Habitat:* NYS Department of State, Division of Coastal Resources (1998). | *Diadromous Fish:* The Nature Conservancy Eastern Conservation Science (2008). | *Shoreline Status:* Hudson River National Estuarine Research Reserve (2005). | *Roadways:* ESRI North American Detailed Streets (2010). | *Railroads:* NYS DOT (May 2013). | *Towns:* NYS GIS Program Office (January 2017). | *Elevation:* NYS DEC and U.S. Geological Survey (date unknown). | *Rivers/Streams:* National Hydrography Dataset: NYS DEC and US Geological Survey (March 2017). | *Wetlands:* US Fish and Wildlife Service (2012) and NYS DEC (2013). **Note:** This map is intended for general planning and education purposes and is not a substitute for site-level surveys. It relies upon public data sources that may contain errors or omissions. Town of East Greenbush Natural Resources Inventory maps were completed with technical assistance from Cornell University, with funding from the NYS Environmental Protection Fund through the NYS DEC Hudson River Estuary Program. <http://hudson.dnr.cals.cornell.edu>
Map by Andrew Varuzzo, 2018.