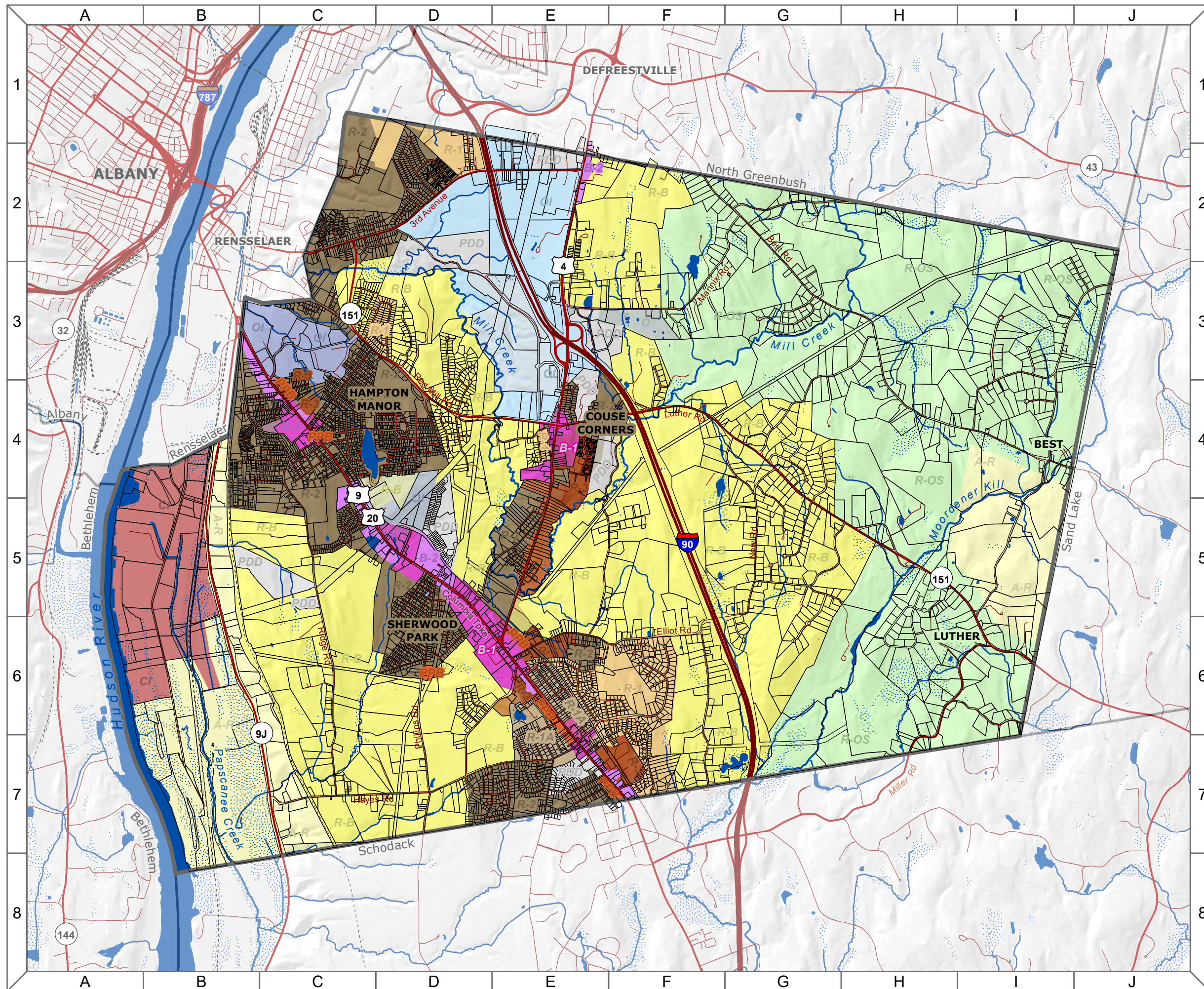


# Town of East Greenbush Natural Resources Inventory

## 20. Town Zoning and Tax Parcels



### Map Legend

#### Zoning Classifications\*

A-R	R-2	B-2
R-OS	R-3	O
R-B	PPB	OC
R-1	PDD	OI
R-1A	B-1	CI

Tax Parcel	Municipality
------------	--------------

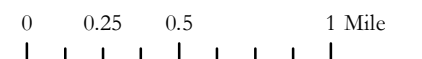
#### Hydrology

Open Water
Wetland
River/Stream

#### Roads

Interstate
State/US Highway
Local Street
Railroad

Scale: 1:40,000



\*Zoning information is included in the Town of East Greenbush Natural Resources Inventory for illustrative purposes only. Always consult the Town's official zoning map before making any land use decision.

**Data Sources:** *East Greenbush Zoning:* Town of East Greenbush Planning and Zoning Department (2008) | *Tax Parcels:* Rensselaer County Tax Services Department (March 2018). | *Roadways:* ESRI North American Detailed Streets (2010). | *Railroads:* NYS DOT (May 2013). | *Towns:* NYS GIS Program Office (January 2017). | *Elevation:* NYS DEC and U.S. Geological Survey (date unknown). | *Rivers/Streams:* National Hydrography Dataset: NYS DEC and US Geological Survey (March 2017). | *Wetlands:* US Fish and Wildlife Service (2012) and NYS DEC (2013). **Note:** This map is intended for general planning and education purposes and is not a substitute for site-level surveys. It relies upon public data sources that may contain errors or omissions. Town of East Greenbush Natural Resources Inventory maps were completed with technical assistance from Cornell University, with funding from the NYS Environmental Protection Fund through the NYS DEC Hudson River Estuary Program. <http://hudson.dnr.cals.cornell.edu>  
Map by Andrew Varuzzo, 2018.



Cornell University



Department of  
Environmental  
Conservation

Hudson River  
Estuary Program