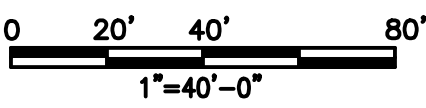


KEY PLAN  
SCALE: 1"=600'

- NOTES:
- FOR GENERAL NOTES AND LEGEND SEE DRAWING. 17-G-0000-D-2.
  - SITE LAYOUT PLANS REFERENCE DRAWING 17-G-1301-D-30, 31,40 AND 41.
  - REFERENCE DRAWING 17-G-1305-D-12 FOR SITE SIGNAGE AND PAVEMENT MARKINGS DETAILS AND NOTES.
  - REFERENCE DRAWING 17-G-1305-D-10 FOR SITE DETAIL.
  - FOR GUIDE RAIL DETAILS REFERENCE STATE OF NEW YORK D.O.T. WEEK POST CORRUGATED-BEAM GUIDE RAIL DRAWINGS, SHEETS 1, 2 AND 3 - 606-07.
  - DIMENSION TO BUILDING IS TO FACE OF BUILDING U.N.O.
  - DIMENSIONS TO CURB IS TO FACE OF CURB.
  - TYPICAL PARKING STALL DIMENSIONS IS 18'-0" IN DEPTH AND 9'-4" IN WIDTH.
  - FOR ZONING INFORMATION REFERENCE DRAWING 17-G-000-D-10.
  - REFERENCE DRAWINGS 17G-1501-D-12 AND 13 FOR STORM SEWER STRUCTURE LOCATION AND STORM SEWER PIPING.
  - REFERENCE DRAWING 17-G-1302-D-10 FOR ROAD PROFILES.
  - INFORMATION SHOWN FOR THE EXISTING WAREHOUSE BUILDING AND SURROUNDING SITE IMPROVEMENTS REFLECT AS-DESIGNED DOCUMENTS AND MAY NOT ACCURATELY REFLECT AS-BUILT INFORMATION. CONTRACTOR TO VERIFY ALL RELEVANT INFORMATION REGARDING THE WAREHOUSE AND SURROUNDING SITE IMPROVEMENTS PRIOR TO CONSTRUCTION.
  - DRAWINGS SHOW EARLY GRADING AS DESIGNED INFORMATION AS EXISTING. REFERENCE BUILDING 17 EARLY GRADING PERMIT PACKAGE FOR EARLY GRADING INFORMATION.
  - INFORMATION CONCERNING SITE TOPOGRAPHY, EXISTING UTILITIES, PROPERTY LINE AND WETLANDS HAS BEEN PROVIDED BY REGENERON.
  - SITE PROPERTY LINE ASSUMES THAT LOTS OWNED BY REGENERON HAVE BEEN CONSOLIDATED INTO A SINGLE LOT.
  - REFERENCE DRAWING 17-G-000-D-2 FOR GENERAL NOTES.
  - BASIS OF BEARINGS IS NEW YORK STATE PLANE COORDINATES SYSTEM EAST ZONE. HORIZONTAL DATUM IS NAD83.
  - REFERENCE ARCHITECTURAL DRAWINGS FOR BUILDING LAYOUT INFORMATION DURING CONSTRUCTION, THE CONTRACTOR SHALL BE RESPONSIBLE FOR ANY AND ALL DAMAGE TO AND FOR MAINTENANCE AND PROTECTION OF EXISTING STRUCTURES OR UTILITIES REGARDLESS OF WHETHER THEY ARE SHOWN ON THE DRAWINGS OR IDENTIFIED BY REGENERON IN THE FIELD.
  - ALL GRADING WORK IN THE PROJECT AREA SHALL BE COORDINATED WITH REGENERON TO MINIMIZE INTERRUPTIONS TO EXISTING OPERATIONS.
  - THE CONTRACTOR SHALL NOTIFY THE RESPONSIBLE ENGINEER IMMEDIATELY IF ANY FIELD CONDITIONS ENCOUNTERED DIFFER MATERIALLY FROM THOSE REPRESENTED ON THE DRAWINGS OR IF SUCH CONDITIONS, IN THE CONTRACTOR'S OPINION, WOULD RENDER THE PROPOSED DESIGN INEFFECTIVE AND/OR INAPPROPRIATE.
  - REFERENCE DRAWINGS 17-G-1601-D-10 AND 11 FOR INFORMATION ON BIORETENTION AREAS.
  - EXISTING GRADES REFLECT AS DESIGNED EARLY GRADING. REFERENCE DRAWINGS 17-G-1301-D-5 AND 6 FOR ROUGH GRADE ELEVATIONS.
  - REFERENCE DRAWINGS 17-G-1201-D-1 AND 2 FOR INITIAL EROSION AND SEDIMENTATION CONTROL PLANS.



Planning Board—Town of East Greenbush  
BY DIRECTION OF  
CHAIRMAN OF THE PLANNING  
BOARD THESE PLANS ARE APPROVED  
SEE FIRST SHEET FOR DATE & SIGNATURE

Rev #	Date:	Description	Drawn By:	Rev #	Date:	Description	Drawn By:
A	08 Oct 2018	Issued for Permit	JR				
B	25 Oct 2018	ISSUED FOR PERMIT					

**CONFIDENTIAL**

THIS DRAWING IS THE PROPERTY OF REGENERON PHARMACEUTICALS, INC. THE INFORMATION CONTAINED HEREIN MAY NOT BE USED OR COPIED IN ANY MANNER WITHOUT THE PRIOR WRITTEN PERMISSION FROM REGENERON PHARMACEUTICALS, INC.

**REGENERON**  
Regeneron Pharmaceuticals, Inc.  
81 Columbia Turnpike  
Rensselaer, NY 12144

Scale: 1"=40'

Bldg.:

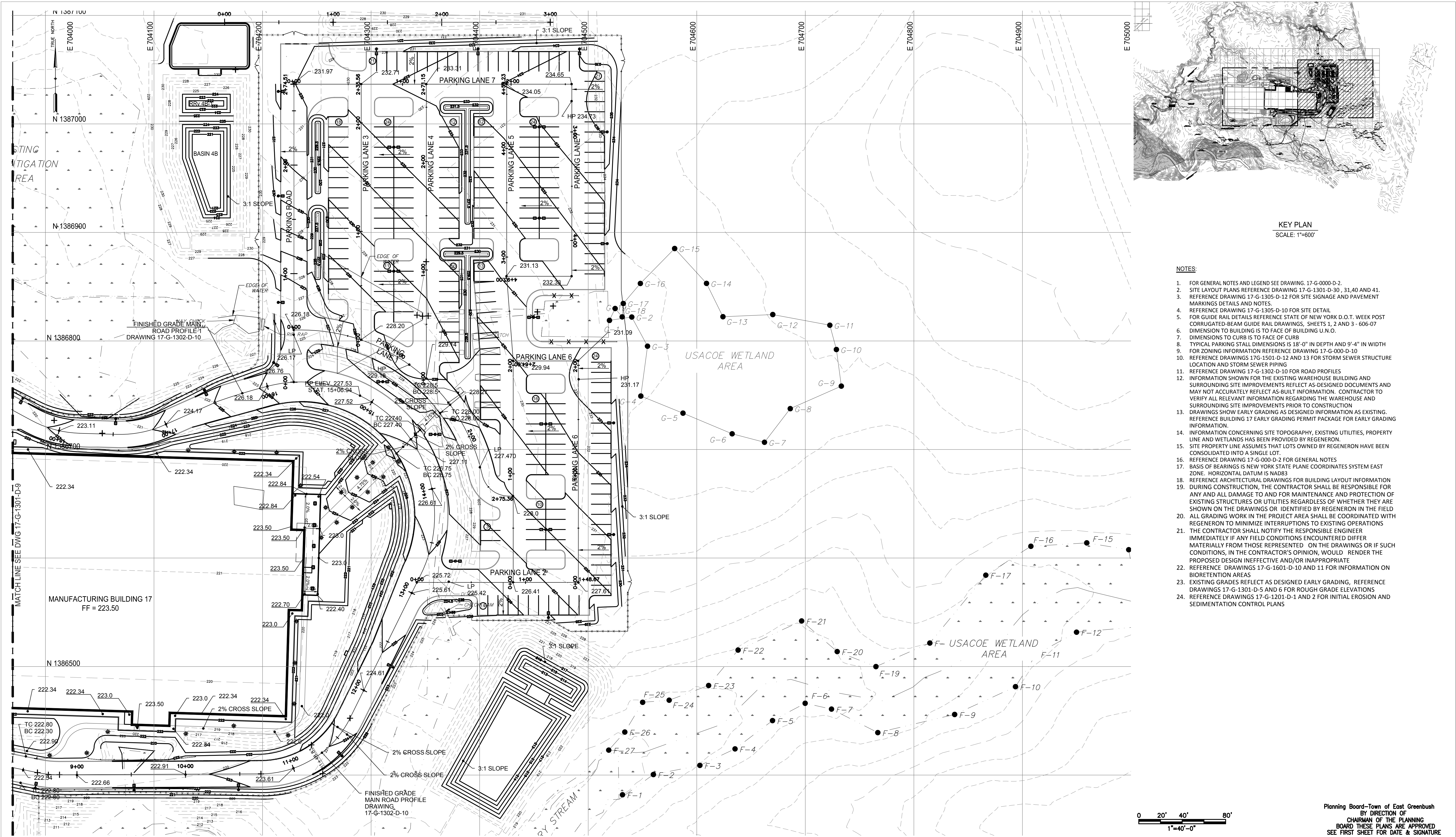
**SITE FINISHED GRADING SHEET 1**

File No.: **17-G-1301-D-9.DWG**

Date: **30/10/2018**

Drawing No.	<b>17-G-1301-D-9</b>
Old Drawing No.	
Revision: <b>B</b>	Sheet:





Rev #	Date:	Description	Drawn By:	Rev #	Date:	Description	Drawn By:
A	08 Oct 2018	Issued for Permit	JR				
B	25 Oct 2018	ISSUED FOR PERMIT					

CONFIDENTIAL

THIS DRAWING IS THE PROPERTY OF  
REGENERON PHARMACEUTICALS, INC. THE  
INFORMATION CONTAINED HEREIN MAY NOT  
BE USED OR COPIED IN ANY MANNER  
WITHOUT THE PRIOR WRITTEN PERMISSION  
FROM REGENERON PHARMACEUTICALS, INC.

REGENERON

Regeneron Pharmaceuticals, Inc.  
81 Columbia Turnpike  
Rensselaer, NY 12144

SITE FINISHED GRADING SHEET 2

File No.: 17-G-1301-D-10.DWG

Drawing No.

17-G-1301-D-10

Old Drawing No.

Scale: 1"=40'

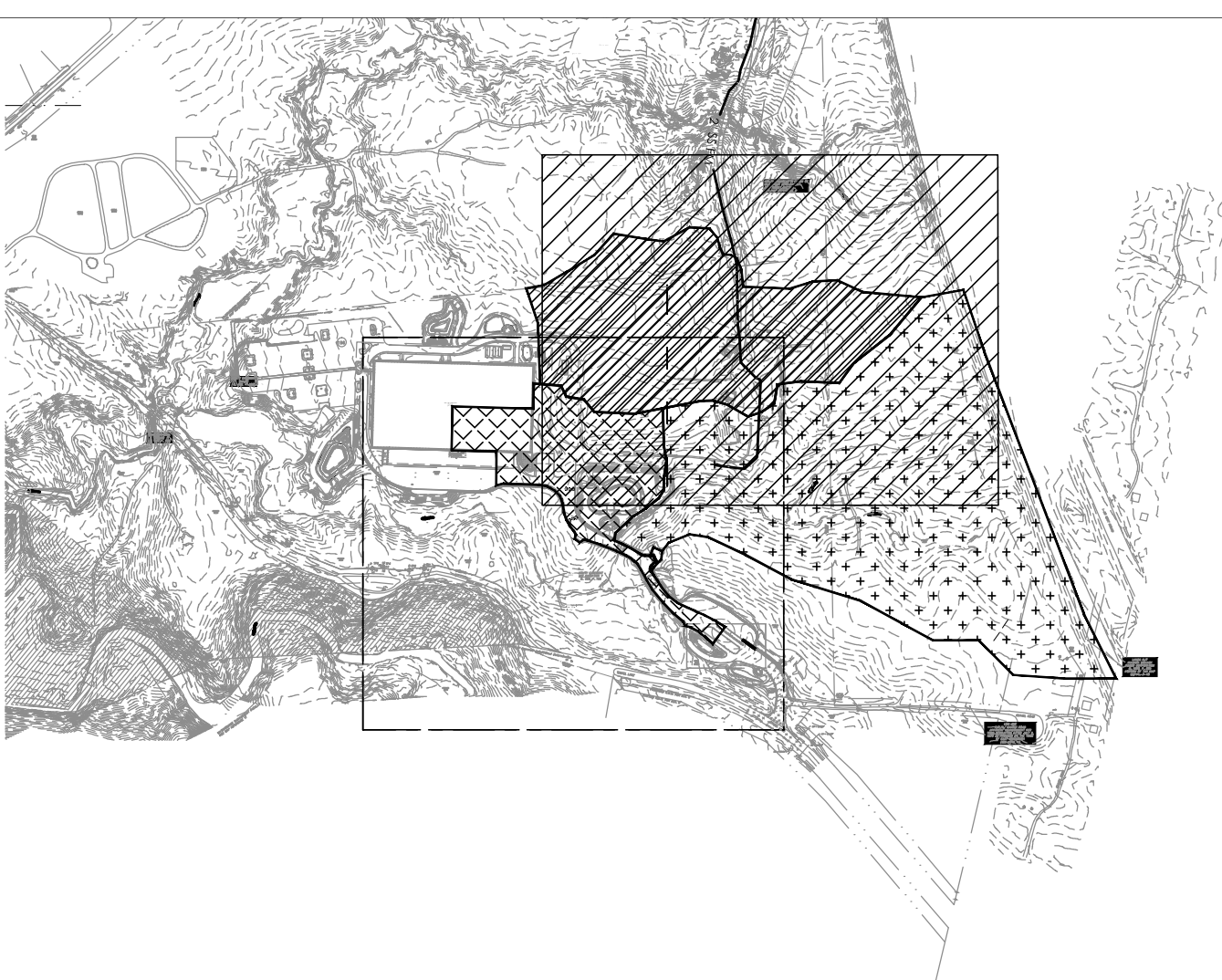
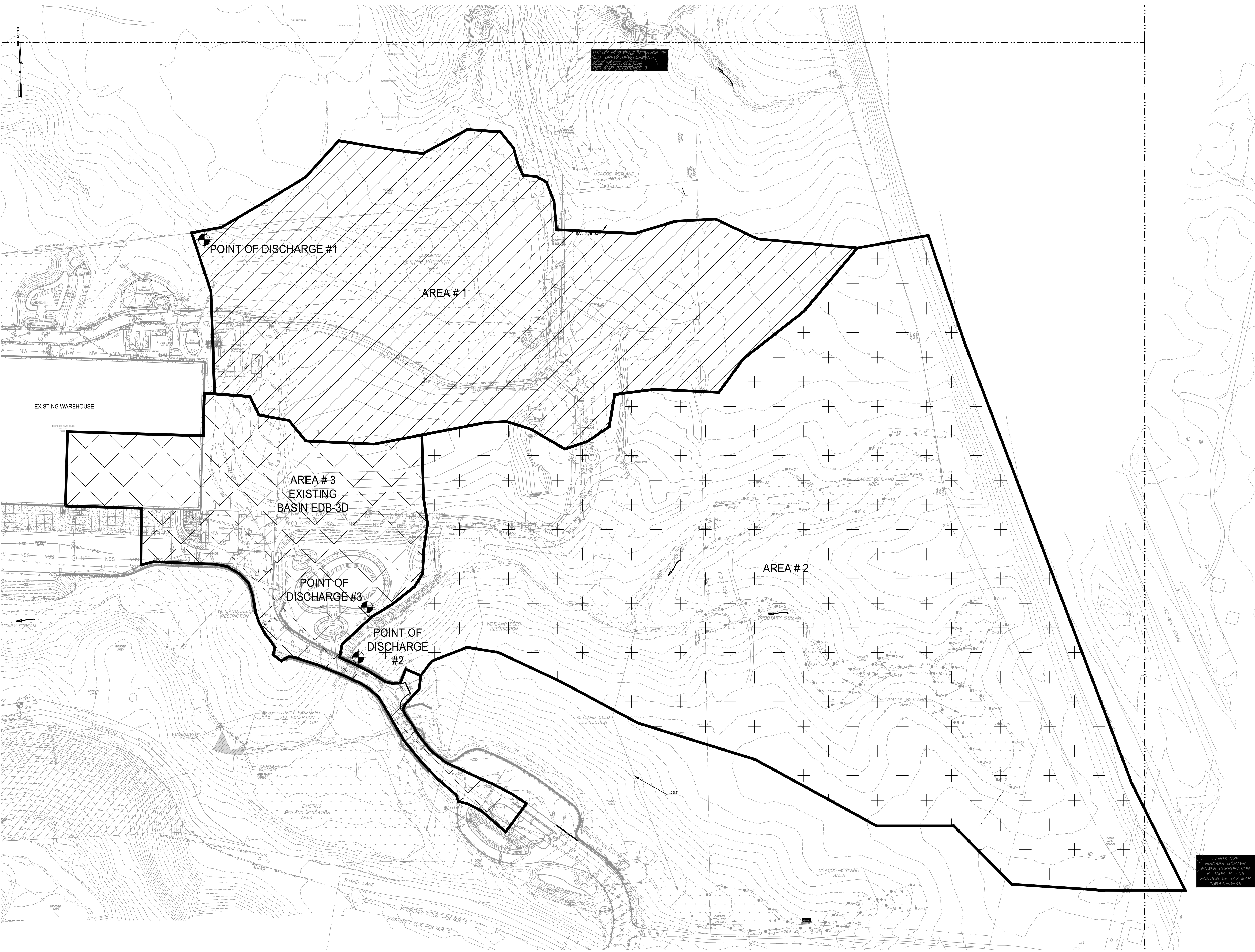
Bldg.:

Date: 30/10/2018

Revision: B

Sheet:





KEY PLAN  
SCALE: 1"=600'

- NOTES:
- FOR GENERAL NOTES AND LEGEND SEE DWG. 17-G-0000-D-2.

1 PRE DEVELOPED DRAINAGE PLAN  
17-G-1501-D-10 1"=100.0'

IMPERVIOUS / PERVIOUS

POINT OF DISCHARGE #1

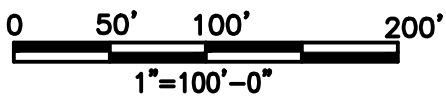
IMPERVIOUS: 0 SF  
PERVIOUS: 542,758 SF (12.46 AC.)  
TOTAL: 542,758 SF (12.46 AC.)

POINT OF DISCHARGE #2

IMPERVIOUS: 0 SF  
PERVIOUS: 1,099,400 SF (25.24 AC.)  
TOTAL: 1,099,400 SF (25.24 AC.)

POINT OF DISCHARGE #3  
EXISTING BASIN EDB-3D

IMPERVIOUS: 98,881 SF (2.27 AC.)  
PERVIOUS: 155,074 SF (3.56 AC.)  
TOTAL: 253,955 SF (5.83 AC.)



Planning Board-Town of East Greenbush  
BY DIRECTION OF  
CHAIRMAN OF THE PLANNING  
BOARD THESE PLANS ARE APPROVED  
SEE FIRST SHEET FOR DATE & SIGNATURE

Rev #	Date:	Description	Drawn By:	Rev #	Date:	Description	Drawn By:
A	08 Oct 2018	ISSUED FOR PERMIT	JR				

**CONFIDENTIAL**

THIS DRAWING IS THE PROPERTY OF  
REGENERON PHARMACEUTICALS, INC. THE  
INFORMATION CONTAINED HEREIN MAY NOT  
BE USED OR COPIED IN ANY MANNER  
WITHOUT THE PRIOR WRITTEN PERMISSION  
FROM REGENERON PHARMACEUTICALS, INC.

**REGENERON**

Regeneron Pharmaceuticals, Inc.  
81 Columbia Turnpike  
Rensselaer, NY 12144

Scale: 1"=60' Bldg.:

**SITE PRE STORMWATER DRAINAGE AREA PLAN**

File No.: 17-G-1501-D-10.DWG

Date: 28/8/2018

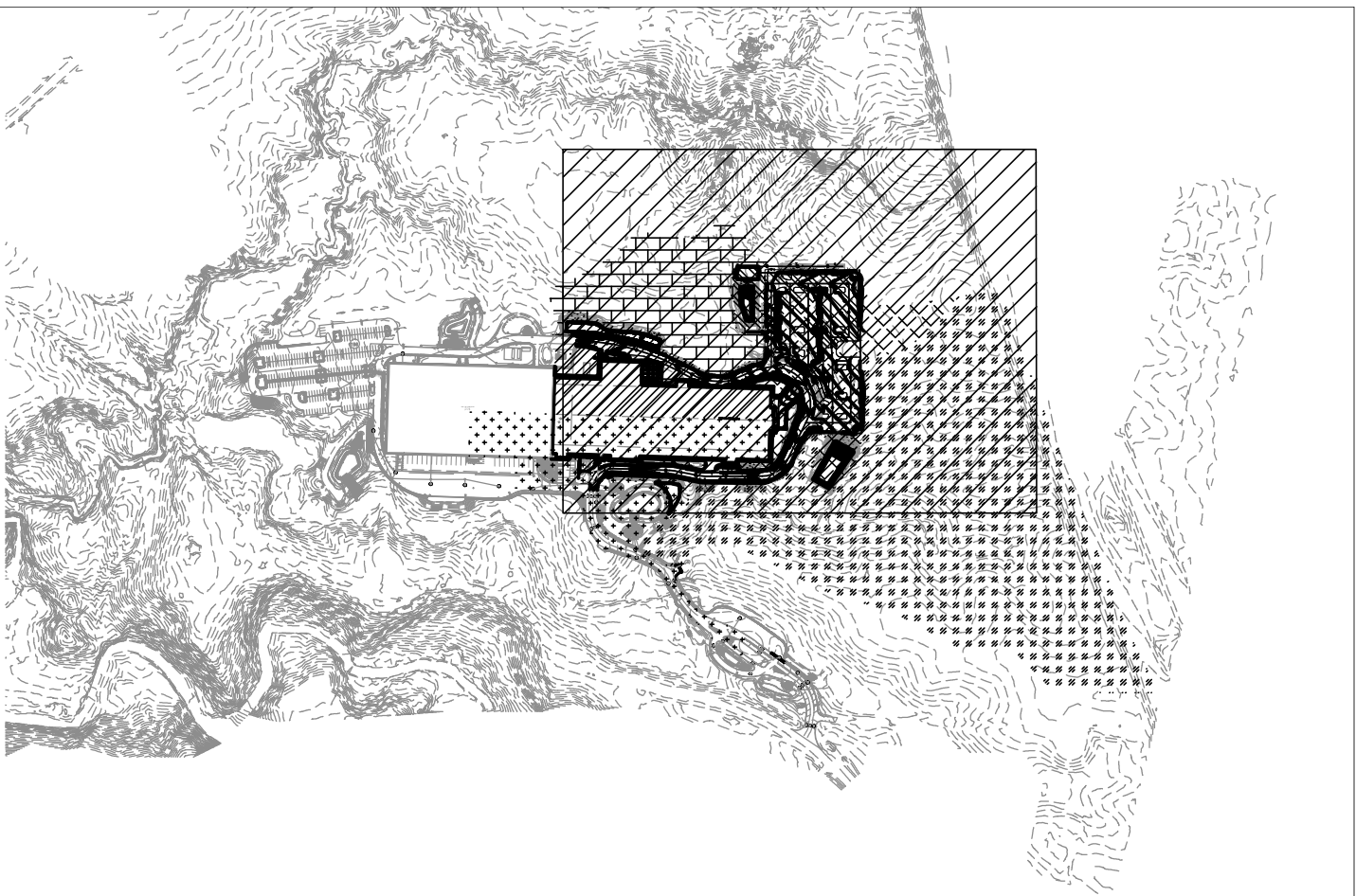
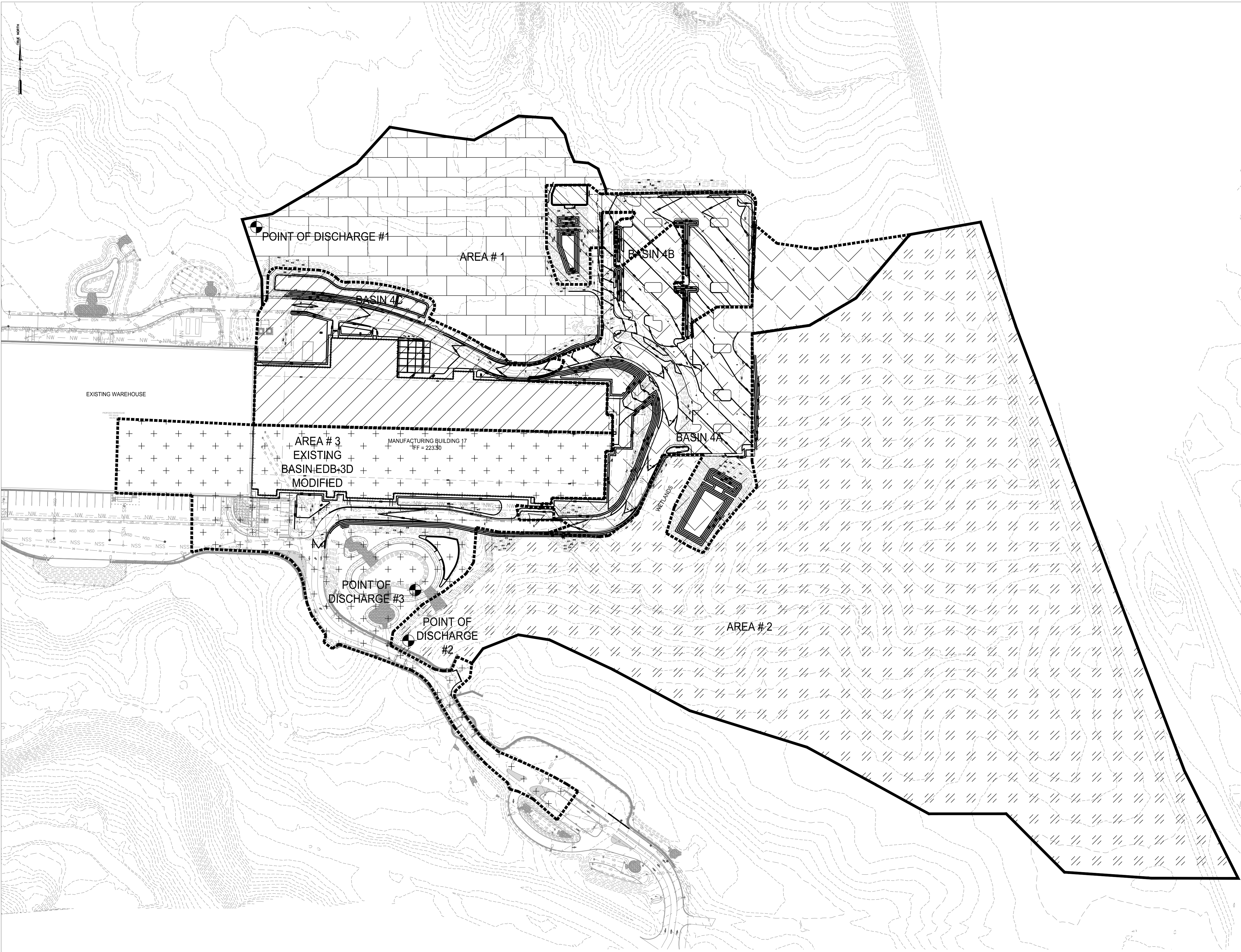
Drawing No.  
**17-G-1501-D-10**

Old Drawing No.

Revision: **A**

Sheet:





KEY PLAN  
SCALE: 1"=600'

- NOTES:
- FOR GENERAL NOTES AND LEGEND SEE DWG. 17-G-0000-D-2.

1 POST DEVELOPED DRAINAGE PLAN  
17-G-1501-D-11 1"=100.0'

IMPERVIOUS / PERVIOUS  
TO POINT OF DISCHARGE #1

AREA #1	
IMPERVIOUS:	0 SF
PERVIOUS:	211,582 SF (4.86 AC.)
TOTAL:	211,582 SF (4.86 AC.)

IMPERVIOUS / PERVIOUS  
TO POINT OF DISCHARGE #2

AREA #2	
IMPERVIOUS:	0 SF
PERVIOUS:	976,663 SF (22.42 AC.)
TOTAL:	976,663 SF (22.42 AC.)

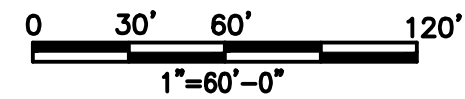
BASIN 4B	
IMPERVIOUS:	37,897 SF (0.87 AC.)
PERVIOUS:	32,234 SF (0.74 AC.)
TOTAL:	70,131 SF (1.61 AC.)

BASIN 4A	
IMPERVIOUS:	87,729 SF (2.01 AC.)
PERVIOUS:	110,206 SF (2.53 AC.)
TOTAL:	197,935 SF (4.54 AC.)

BASIN 4C	
IMPERVIOUS:	101,059 SF (2.32 AC.)
PERVIOUS:	51,401 SF (1.18 AC.)
TOTAL:	152,460 SF (3.50 AC.)

POINT OF DISCHARGE #3  
MODIFIED EXISTING BASIN EDB-3D

IMPERVIOUS:	204,521 SF (4.70 AC.)
PERVIOUS:	80,856 SF (1.86 AC.)
TOTAL:	285,377 SF (6.56 AC.)



Planning Board-Town of East Greenbush  
BY DIRECTION OF  
CHAIRMAN OF THE PLANNING  
BOARD THESE PLANS ARE APPROVED  
SEE FIRST SHEET FOR DATE & SIGNATURE

Rev #	Date:	Description	Drawn By:	Rev #	Date:	Description	Drawn By:
A	08 Oct 2018	ISSUED FOR PERMIT	JR				

CONFIDENTIAL

THIS DRAWING IS THE PROPERTY OF  
REGENERON PHARMACEUTICALS, INC. THE  
INFORMATION CONTAINED HEREIN MAY NOT  
BE USED OR COPIED IN ANY MANNER  
WITHOUT THE PRIOR WRITTEN PERMISSION  
FROM REGENERON PHARMACEUTICALS, INC.

REGENERON

Regeneron Pharmaceuticals, Inc.  
81 Columbia Turnpike  
Rensselaer, NY 12144

Scale: 1"=60'

Bldg.:

SITE POST STORMWATER DRAINAGE AREA PLAN

File No.: 17-G-1501-D-11.DWG

Date: 28/8/2018

Drawing No.

17-G-1501-D-11

Old Drawing No.

Revision: A

Sheet: