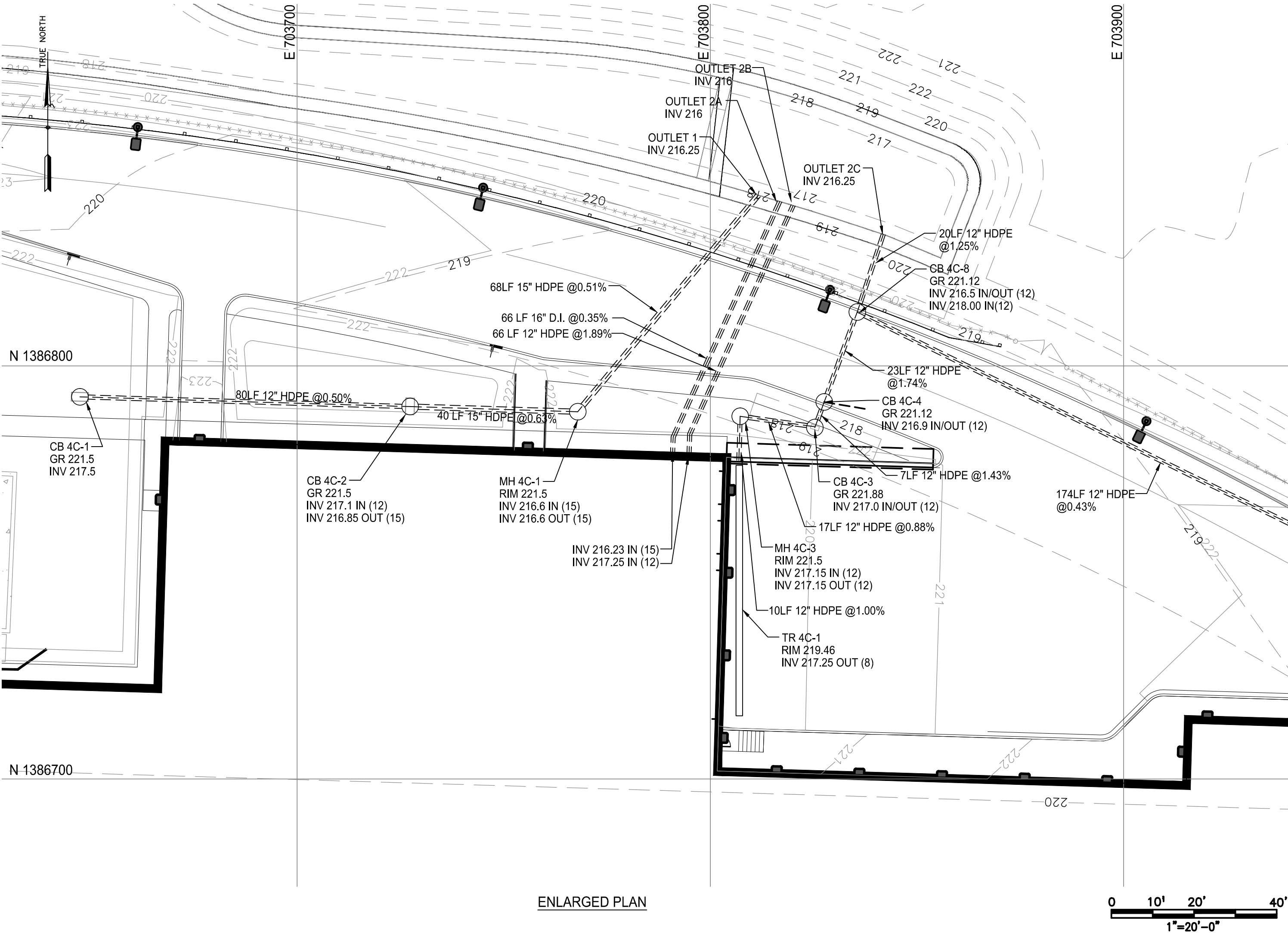
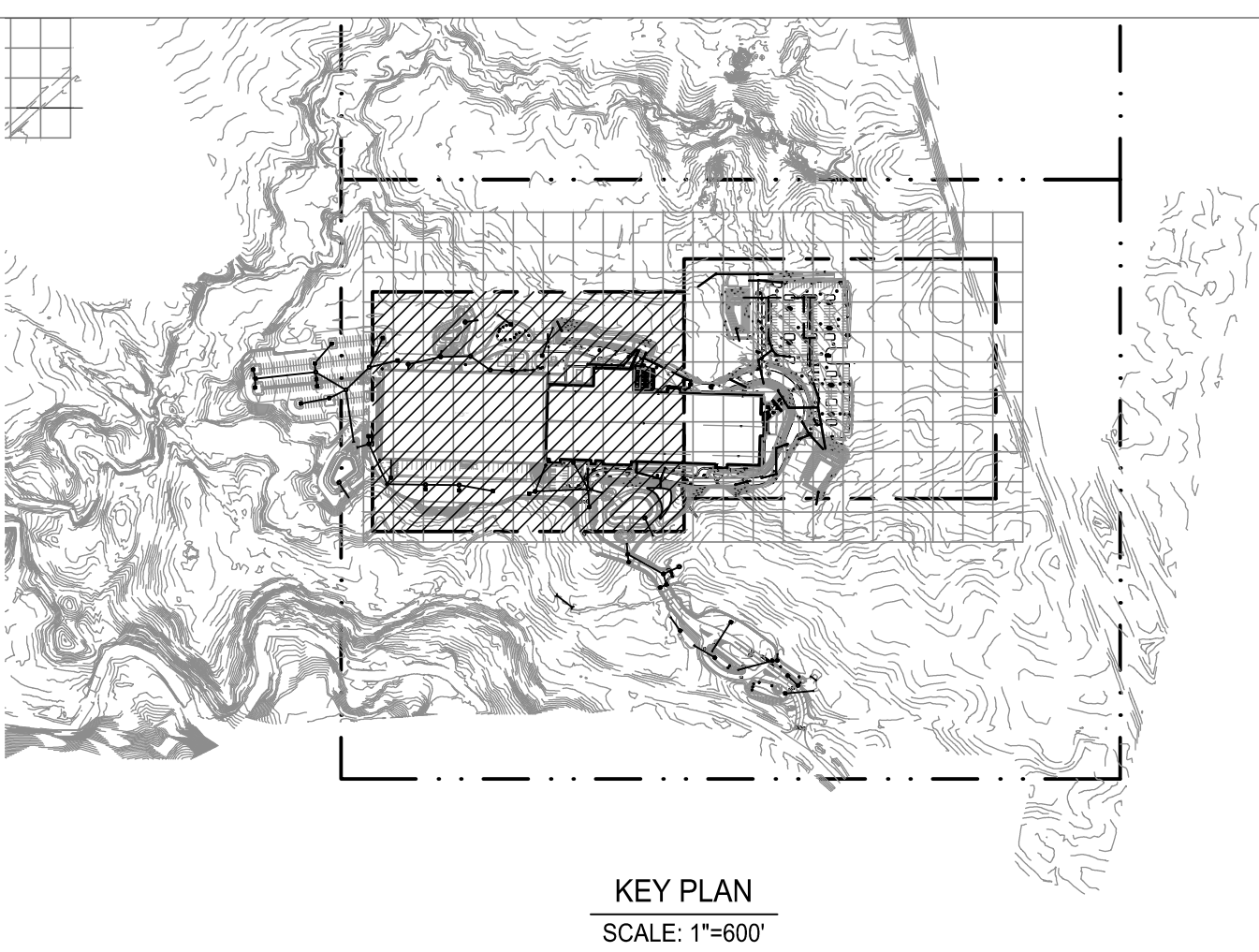


- NOTES:
- FOR GENERAL NOTES AND LEGEND SEE DWG. 17-G-0000-D-2.
  - UNDERGROUND FACILITY AND UTILITY LOCATIONS SHOWN ARE NOT GUARANTEED, NOR IS THERE ANY GUARANTEE THAT ALL EXISTING UTILITIES WITHIN THE PROJECT AREA IS SHOWN. THE EXISTENCE OF ALL UNDERGROUND FACILITIES SHALL BE INVESTIGATED AND VERIFIED BY THE CONTRACTOR IN THE FIELD PRIOR TO COMMENCING WORK. THE CONTRACTOR SHALL DETERMINE THE EXACT LOCATION AND DEPTH OF ALL UNDERGROUND FACILITIES AND UTILITIES WHETHER FUNCTIONAL OR ABANDONED AND SHALL BE RESPONSIBLE FOR ANY DAMAGE CAUSED.
  - A MINIMUM OF TWO (2.0) FEET SEPARATION WITH EXISTING STRUCTURES OR UTILITIES SHALL BE MAINTAINED WHEN USING POWERED EXCAVATING EQUIPMENT. IF THIS SEPARATION CANNOT BE MAINTAINED THE CONTRACTOR SHALL USE HAND EXCAVATING TECHNIQUES TO EXPOSE AND COMPLETELY LOCATE THE ITEM PRIOR TO PROCEEDING WITH POWERED EXCAVATION EQUIPMENT. THE CONTRACTOR SHALL BE RESPONSIBLE FOR ALL REQUIRED SHORING AND BRACING, IF NEEDED.
  - DURING CONSTRUCTION, THE CONTRACTOR SHALL BE RESPONSIBLE FOR ANY AND ALL DAMAGE TO AND FOR MAINTENANCE AND PROTECTION OF EXISTING STRUCTURES OR UTILITIES REGARDLESS OF WHETHER THEY ARE SHOWN ON THE DRAWINGS OR IDENTIFIED BY SIEMENS IN THE FIELD.
  - ALL WORK IN THE PROJECT AREA MUST BE COORDINATED WITH REGENERON TO MINIMIZE ANY INTERRUPTION OF PLANT OPERATIONS.
  - THE CONTRACTOR SHALL NOTIFY THE RESPONSIBLE ENGINEER IMMEDIATELY IF ANY FIELD CONDITIONS ENCOUNTERED DIFFER MATERIALLY FROM THOSE REPRESENTED ON THE DRAWINGS OR IF SUCH CONDITIONS, IN THE CONTRACTOR'S OPINION, WOULD RENDER THE PROPOSED DESIGN INEFFECTIVE AND/OR INAPPROPRIATE.



Rev #	Date:	Description	Drawn By:	Rev #	Date:	Description	Drawn By:
A	08 Oct 2018	Issued for Permit	JR				
B	25 Oct 2018	ISSUED FOR PERMIT					

**CONFIDENTIAL**

THIS DRAWING IS THE PROPERTY OF REGENERON PHARMACEUTICALS, INC. THE INFORMATION CONTAINED HEREIN MAY NOT BE USED OR COPIED IN ANY MANNER WITHOUT THE PRIOR WRITTEN PERMISSION FROM REGENERON PHARMACEUTICALS, INC.

**REGENERON**  
Regeneron Pharmaceuticals, Inc.  
81 Columbia Turnpike  
Rensselaer, NY 12144

Scale: 1"=40'

Bldg.:

**SITE STORM SEWER SHEET 1**

File No.: 17-G-1501-D-12.DWG

Date: 30/10/2018

Drawing No.  
**17-G-1501-D-12**

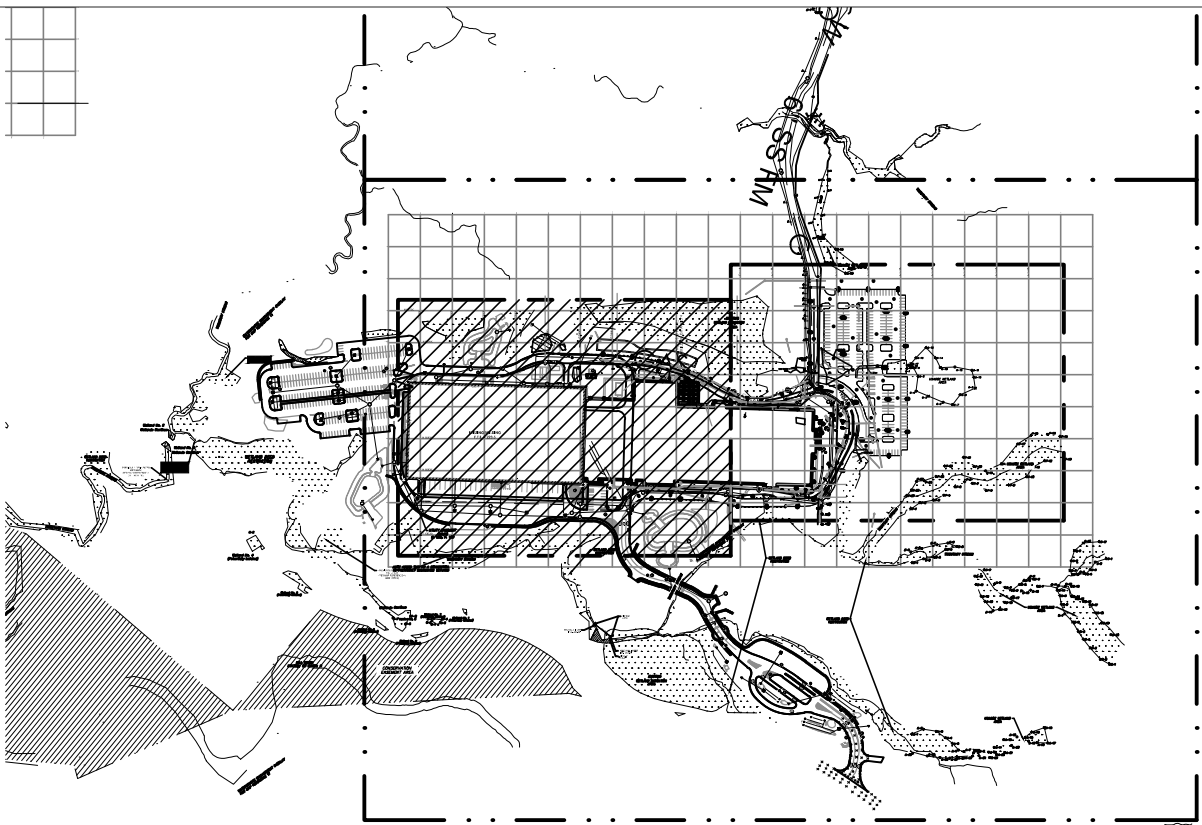
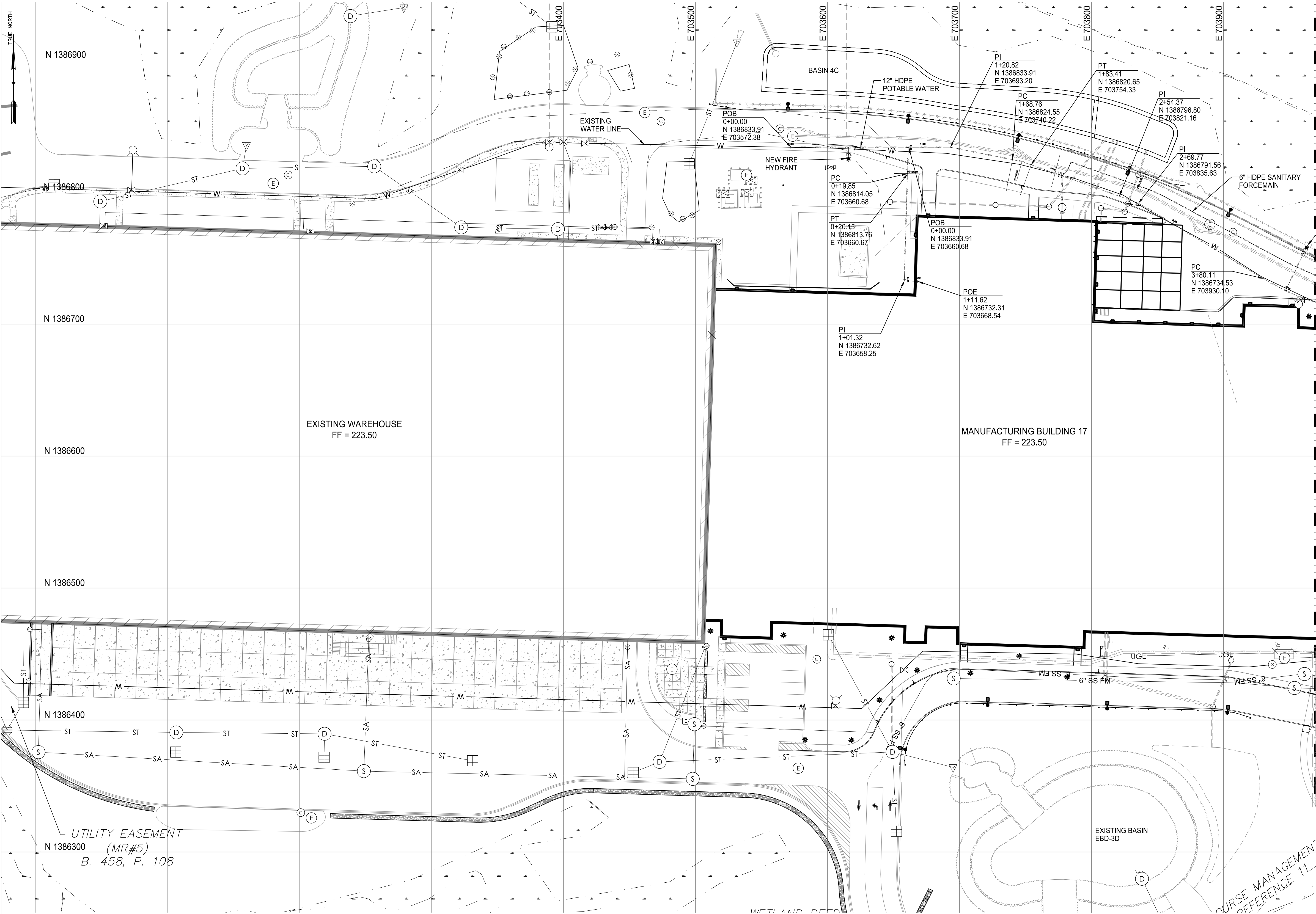
Old Drawing No.

Revision: **B**

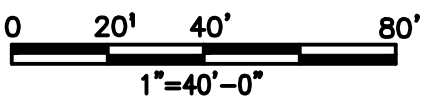
Sheet:







- NOTES:
- FOR GENERAL NOTES AND LEGEND SEE DWG. 17-G-0000-D-2.
  - UNDERGROUND FACILITY AND UTILITY LOCATIONS SHOWN ARE NOT GUARANTEED, NOR IS THERE ANY GUARANTEE THAT ALL EXISTING UTILITIES WITHIN THE PROJECT AREA IS SHOWN. THE EXISTENCE OF ALL UNDERGROUND FACILITIES SHALL BE INVESTIGATED AND VERIFIED BY THE CONTRACTOR IN THE FIELD PRIOR TO COMMENCING WORK. THE CONTRACTOR SHALL DETERMINE THE EXACT LOCATION AND DEPTH OF ALL UNDERGROUND FACILITIES AND UTILITIES WHETHER FUNCTIONAL OR ABANDONED AND SHALL BE RESPONSIBLE FOR ANY DAMAGE CAUSED.
  - A MINIMUM OF TWO (2.0) FEET SEPARATION WITH EXISTING STRUCTURES OR UTILITIES SHALL BE MAINTAINED WHEN USING POWERED EXCAVATING EQUIPMENT. IF THIS SEPARATION CANNOT BE MAINTAINED THE CONTRACTOR SHALL USE HAND EXCAVATING TECHNIQUES TO EXPOSE AND COMPLETELY LOCATE THE ITEM PRIOR TO PROCEEDING WITH POWERED EXCAVATION EQUIPMENT. THE CONTRACTOR SHALL BE RESPONSIBLE FOR ALL REQUIRED SHORING AND BRACING, IF NEEDED.
  - DURING CONSTRUCTION, THE CONTRACTOR SHALL BE RESPONSIBLE FOR ANY AND ALL DAMAGE TO AND FOR MAINTENANCE AND PROTECTION OF EXISTING STRUCTURES OR UTILITIES REGARDLESS OF WHETHER THEY ARE SHOWN ON THE DRAWINGS OR IDENTIFIED BY SIEMENS IN THE FIELD.
  - ALL WORK IN THE PROJECT AREA MUST BE COORDINATED WITH REGENERON TO MINIMIZE ANY INTERRUPTION OF PLANT OPERATIONS.
  - THE CONTRACTOR SHALL NOTIFY THE RESPONSIBLE ENGINEER IMMEDIATELY IF ANY FIELD CONDITIONS ENCOUNTERED DIFFER MATERIALLY FROM THOSE REPRESENTED ON THE DRAWINGS OR IF SUCH CONDITIONS, IN THE CONTRACTOR'S OPINION, WOULD RENDER THE PROPOSED DESIGN INEFFECTIVE AND/OR INAPPROPRIATE.
  - SANITARY LINE TO BE INSTALLED 11.0' MIN. (HORZ.) AND 18" MIN. (VERT.) FROM ALL POTABLE WATER LINES.



Planning Board—Town of East Greenbush  
BY DIRECTION OF  
CHAIRMAN OF THE PLANNING  
BOARD THESE PLANS ARE APPROVED  
SEE FIRST SHEET FOR DATE & SIGNATURE

Rev #	Date:	Description	Drawn By:	Rev #	Date:	Description	Drawn By:
A	25 Oct 2018	ISSUED FOR PERMIT					

**CONFIDENTIAL**

THIS DRAWING IS THE PROPERTY OF  
REGENERON PHARMACEUTICALS, INC. THE  
INFORMATION CONTAINED HEREIN MAY NOT  
BE USED OR COPIED IN ANY MANNER  
WITHOUT THE PRIOR WRITTEN PERMISSION  
FROM REGENERON PHARMACEUTICALS, INC.

**REGENERON**  
Regeneron Pharmaceuticals, Inc.  
81 Columbia Turnpike  
Rensselaer, NY 12144

Scale: 1"=40'

Bldg.:

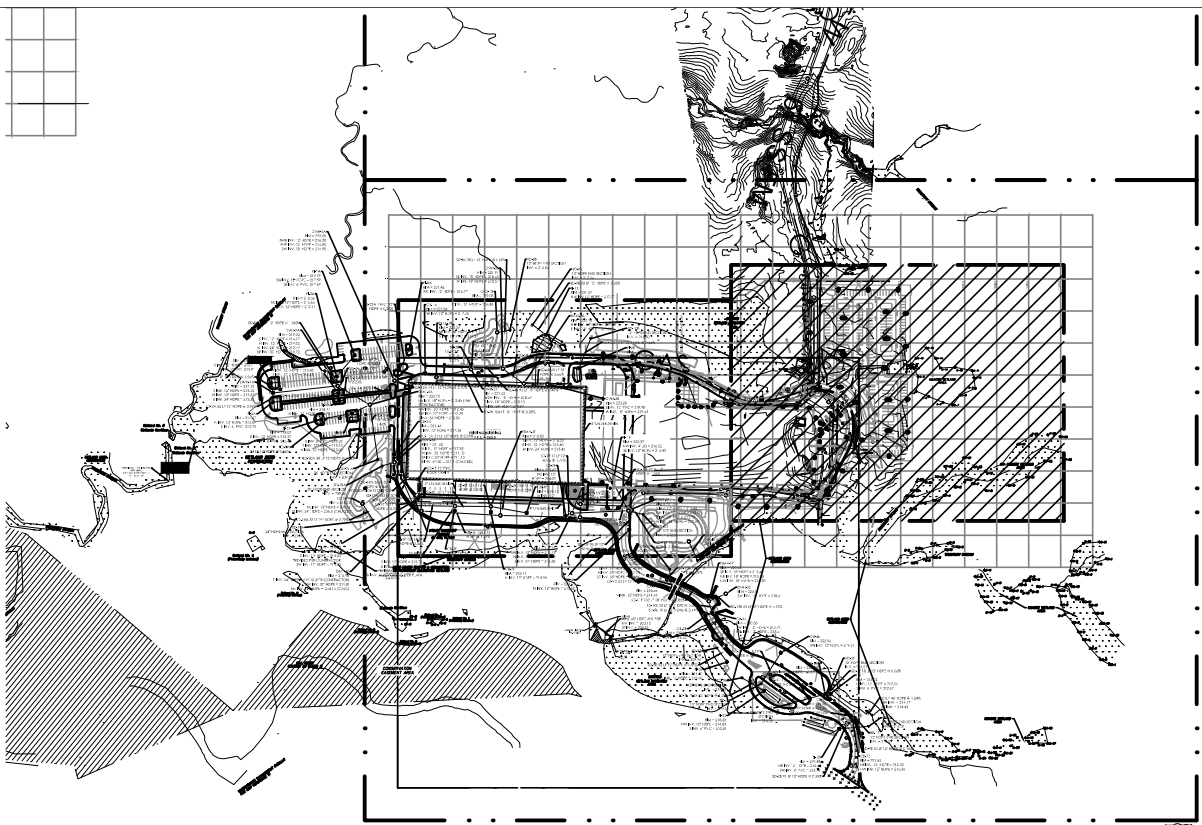
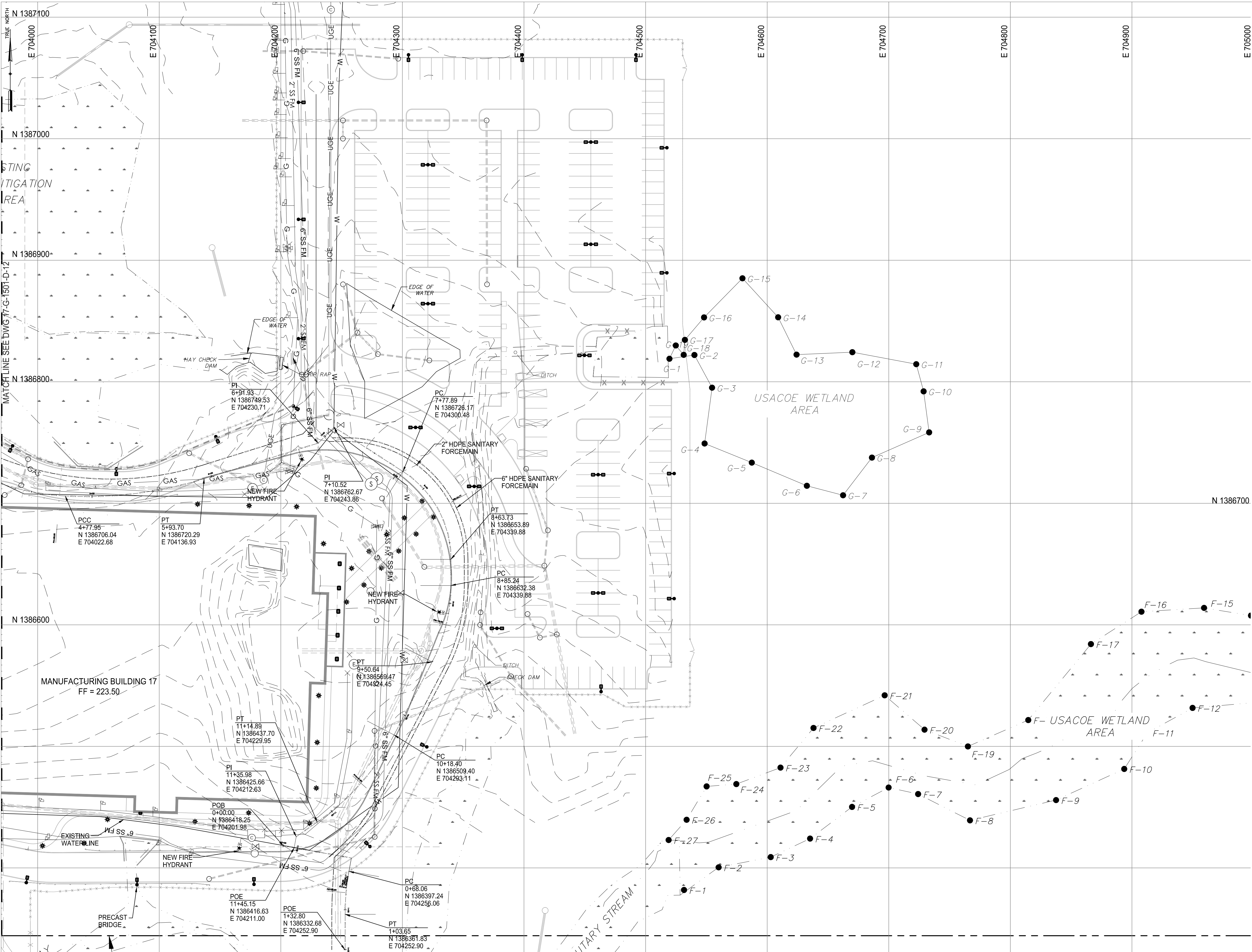
**SITE WATER AND SANITARY LAYOUT**  
**SHEET 1**

File No.: 17-G-1501-D-16.DWG

Date: 15/10/2018

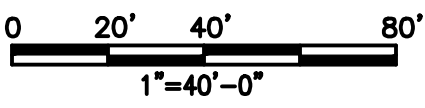
Drawing No.	17-G-1501-D-16
Old Drawing No.	
Revision: A	Sheet:





KEY PLAN  
SCALE: 1"=600'

- NOTES:
- FOR GENERAL NOTES AND LEGEND SEE DWG. 17-G-0000-D-2.
  - UNDERGROUND FACILITY AND UTILITY LOCATIONS SHOWN ARE NOT GUARANTEED, NOR IS THERE ANY GUARANTEE THAT ALL EXISTING UTILITIES WITHIN THE PROJECT AREA IS SHOWN. THE EXISTENCE OF ALL UNDERGROUND FACILITIES SHALL BE INVESTIGATED AND VERIFIED BY THE CONTRACTOR IN THE FIELD PRIOR TO COMMENCING WORK. THE CONTRACTOR SHALL DETERMINE THE EXACT LOCATION AND DEPTH OF ALL UNDERGROUND FACILITIES AND UTILITIES WHETHER FUNCTIONAL OR ABANDONED AND SHALL BE RESPONSIBLE FOR ANY DAMAGE CAUSED.
  - A MINIMUM OF TWO (2.0) FEET SEPARATION WITH EXISTING STRUCTURES OR UTILITIES SHALL BE MAINTAINED WHEN USING POWERED EXCAVATING EQUIPMENT. IF THIS SEPARATION CANNOT BE MAINTAINED THE CONTRACTOR SHALL USE HAND EXCAVATING TECHNIQUES TO EXPOSE AND COMPLETELY LOCATE THE ITEM PRIOR TO PROCEEDING WITH POWERED EXCAVATION EQUIPMENT. THE CONTRACTOR SHALL BE RESPONSIBLE FOR ALL REQUIRED SHORING AND BRACING, IF NEEDED.
  - DURING CONSTRUCTION, THE CONTRACTOR SHALL BE RESPONSIBLE FOR ANY AND ALL DAMAGE TO AND FOR MAINTENANCE AND PROTECTION OF EXISTING STRUCTURES OR UTILITIES REGARDLESS OF WHETHER THEY ARE SHOWN ON THE DRAWINGS OR IDENTIFIED BY SIEMENS IN THE FIELD.
  - ALL WORK IN THE PROJECT AREA MUST BE COORDINATED WITH REGENERON TO MINIMIZE ANY INTERRUPTION OF PLANT OPERATIONS.
  - THE CONTRACTOR SHALL NOTIFY THE RESPONSIBLE ENGINEER IMMEDIATELY IF ANY FIELD CONDITIONS ENCOUNTERED DIFFER MATERIALLY FROM THOSE REPRESENTED ON THE DRAWINGS OR IF SUCH CONDITIONS, IN THE CONTRACTOR'S OPINION, WOULD RENDER THE PROPOSED DESIGN INEFFECTIVE AND/OR INAPPROPRIATE.
  - SANITARY LINE TO BE INSTALLED 11.0' MIN. (HORZ. ) AND 18" MIN. (VERT.) FROM ALL POTABLE WATER LINES.



Planning Board—Town of East Greenbush  
BY DIRECTION OF  
CHAIRMAN OF THE PLANNING  
BOARD THESE PLANS ARE APPROVED  
SEE FIRST SHEET FOR DATE & SIGNATURE

Rev #	Date:	Description	Drawn By:	Rev #	Date:	Description	Drawn By:
A	25 Oct 2018	ISSUED FOR PERMIT					

CONFIDENTIAL

THIS DRAWING IS THE PROPERTY OF  
REGENERON PHARMACEUTICALS, INC. THE  
INFORMATION CONTAINED HEREIN MAY NOT  
BE USED OR COPIED IN ANY MANNER  
WITHOUT THE PRIOR WRITTEN PERMISSION  
FROM REGENERON PHARMACEUTICALS, INC.

REGENERON

Regeneron Pharmaceuticals, Inc.  
81 Columbia Turnpike  
Rensselaer, NY 12144

Scale: 1"=40'

Bldg.:

SITE WATER AND SANITARY LAYOUT  
SHEET 2

File No.: 17-G-1501-D-17.DWG

Date: 15/10/2018

Drawing No.

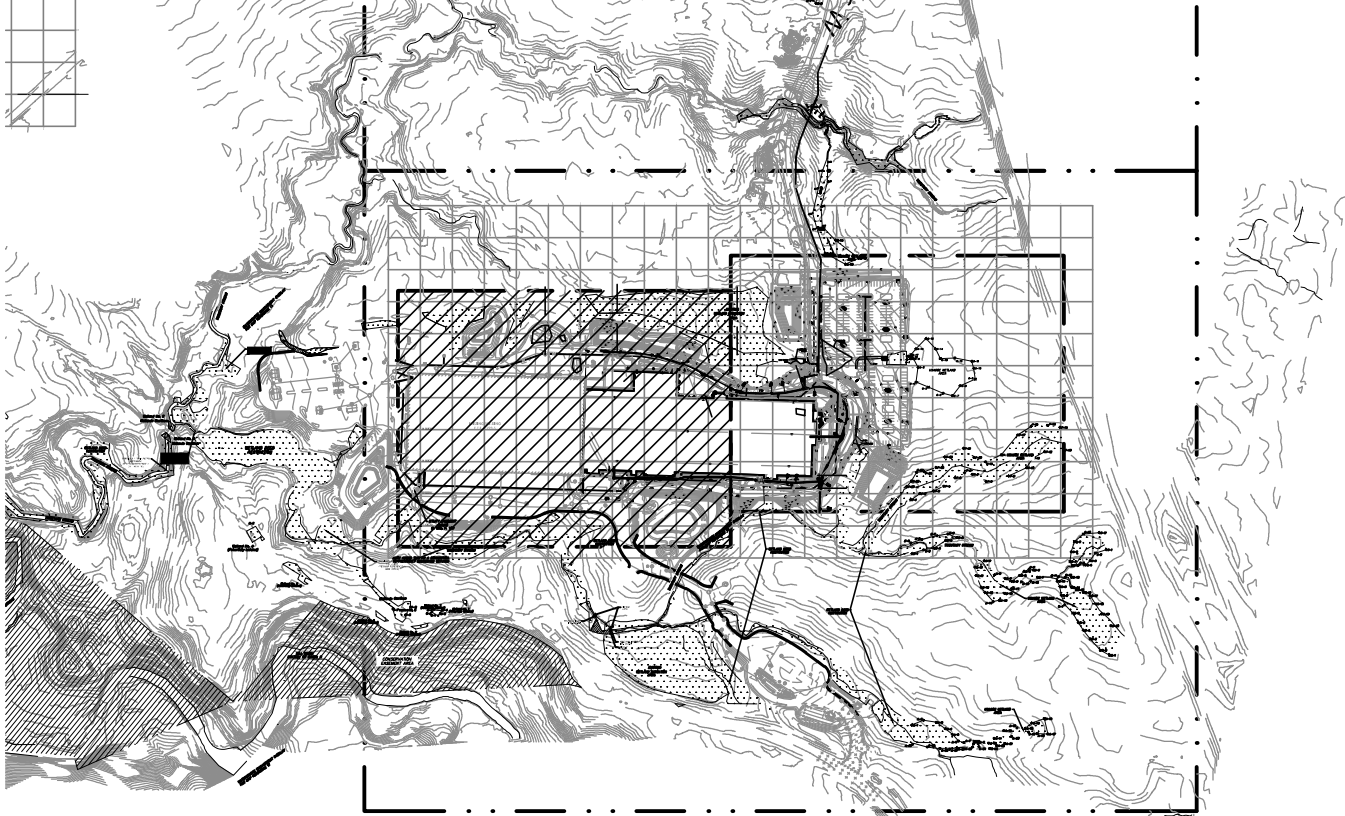
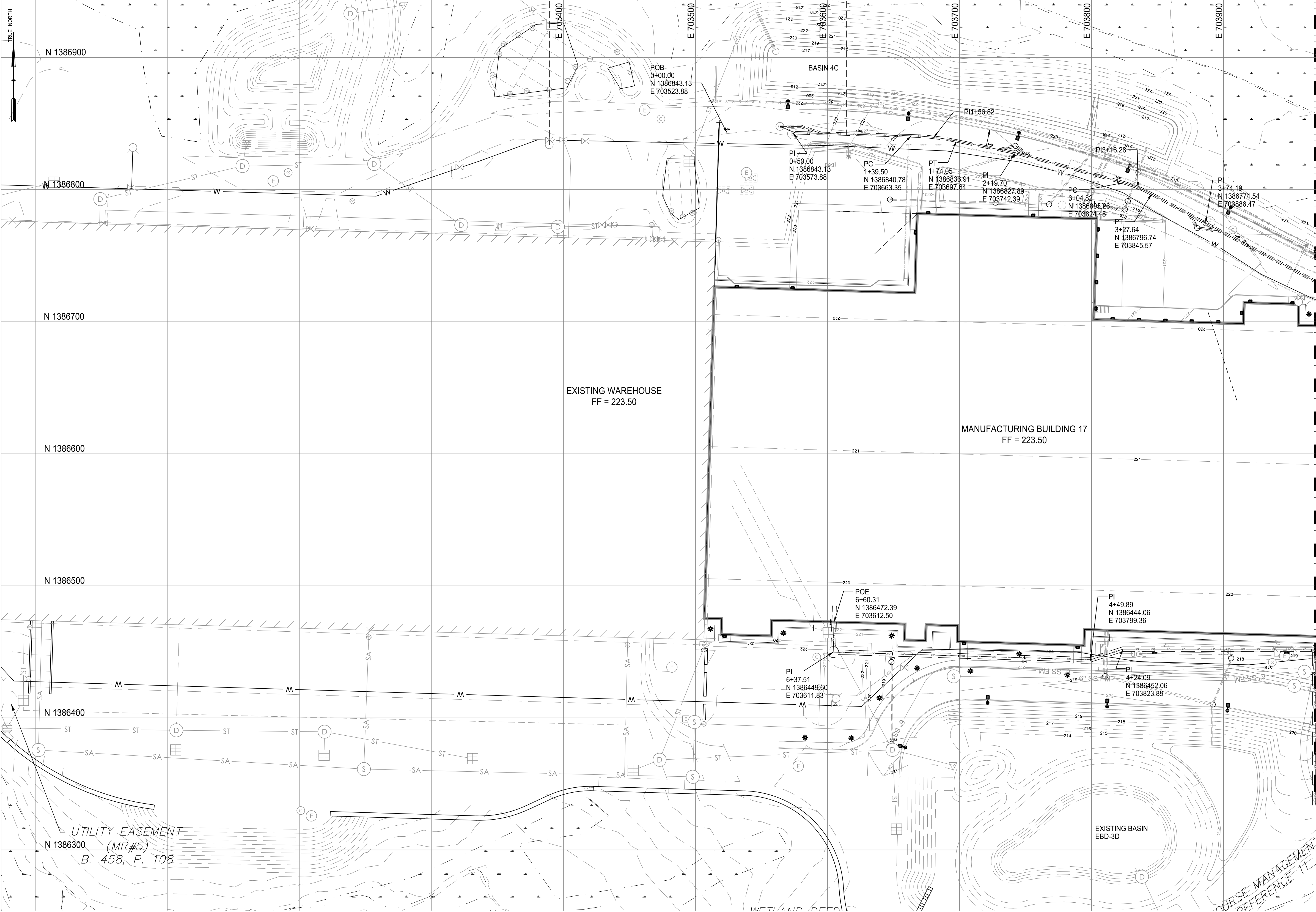
17-G-1501-D-17

Old Drawing No.

Revision: A

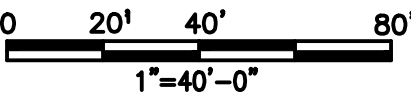
Sheet:





KEY PLAN  
SCALE: 1"=600'

- NOTES:
- FOR GENERAL NOTES AND LEGEND SEE DWG. 17-G-0000-D-2.
  - UNDERGROUND FACILITY AND UTILITY LOCATIONS SHOWN ARE NOT GUARANTEED, NOR IS THERE ANY GUARANTEE THAT ALL EXISTING UTILITIES WITHIN THE PROJECT AREA IS SHOWN. THE EXISTENCE OF ALL UNDERGROUND FACILITIES SHALL BE INVESTIGATED AND VERIFIED BY THE CONTRACTOR IN THE FIELD PRIOR TO COMMENCING WORK. THE CONTRACTOR SHALL DETERMINE THE EXACT LOCATION AND DEPTH OF ALL UNDERGROUND FACILITIES AND UTILITIES WHETHER FUNCTIONAL OR ABANDONED AND SHALL BE RESPONSIBLE FOR ANY DAMAGE CAUSED.
  - A MINIMUM OF TWO (2.0) FEET SEPARATION WITH EXISTING STRUCTURES OR UTILITIES SHALL BE MAINTAINED WHEN USING POWERED EXCAVATING EQUIPMENT. IF THIS SEPARATION CANNOT BE MAINTAINED THE CONTRACTOR SHALL USE HAND EXCAVATING TECHNIQUES TO EXPOSE AND COMPLETELY LOCATE THE ITEM PRIOR TO PROCEEDING WITH POWERED EXCAVATION EQUIPMENT. THE CONTRACTOR SHALL BE RESPONSIBLE FOR ALL REQUIRED SHORING AND BRACING, IF NEEDED.
  - DURING CONSTRUCTION, THE CONTRACTOR SHALL BE RESPONSIBLE FOR ANY AND ALL DAMAGE TO AND FOR MAINTENANCE AND PROTECTION OF EXISTING STRUCTURES OR UTILITIES REGARDLESS OF WHETHER THEY ARE SHOWN ON THE DRAWINGS OR IDENTIFIED BY SIEMENS IN THE FIELD.
  - ALL WORK IN THE PROJECT AREA MUST BE COORDINATED WITH REGENERON TO MINIMIZE ANY INTERRUPTION OF PLANT OPERATIONS.
  - THE CONTRACTOR SHALL NOTIFY THE RESPONSIBLE ENGINEER IMMEDIATELY IF ANY FIELD CONDITIONS ENCOUNTERED DIFFER MATERIALLY FROM THOSE REPRESENTED ON THE DRAWINGS OR IF SUCH CONDITIONS, IN THE CONTRACTOR'S OPINION, WOULD RENDER THE PROPOSED DESIGN INEFFECTIVE AND/OR INAPPROPRIATE.



Planning Board—Town of East Greenbush  
BY DIRECTION OF  
CHAIRMAN OF THE PLANNING  
BOARD THESE PLANS ARE APPROVED  
SEE FIRST SHEET FOR DATE & SIGNATURE

Rev #	Date:	Description	Drawn By:	Rev #	Date:	Description	Drawn By:
A	25 Oct 2018	ISSUED FOR PERMIT					

**CONFIDENTIAL**

THIS DRAWING IS THE PROPERTY OF  
REGENERON PHARMACEUTICALS, INC. THE  
INFORMATION CONTAINED HEREIN MAY NOT  
BE USED OR COPIED IN ANY MANNER  
WITHOUT THE PRIOR WRITTEN PERMISSION  
FROM REGENERON PHARMACEUTICALS, INC.

**REGENERON**  
Regeneron Pharmaceuticals, Inc.  
81 Columbia Turnpike  
Rensselaer, NY 12144

Scale: 1"=40'

Bldg.:

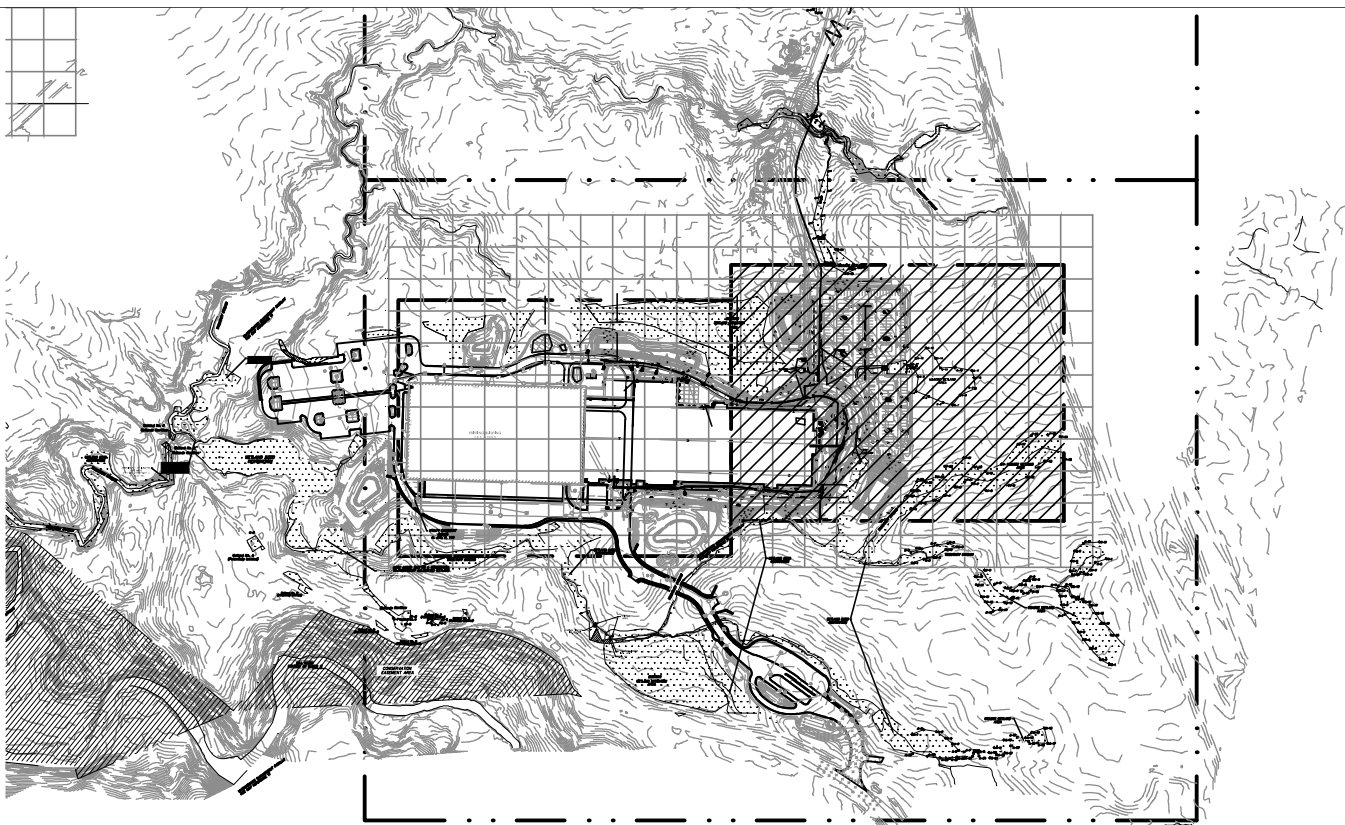
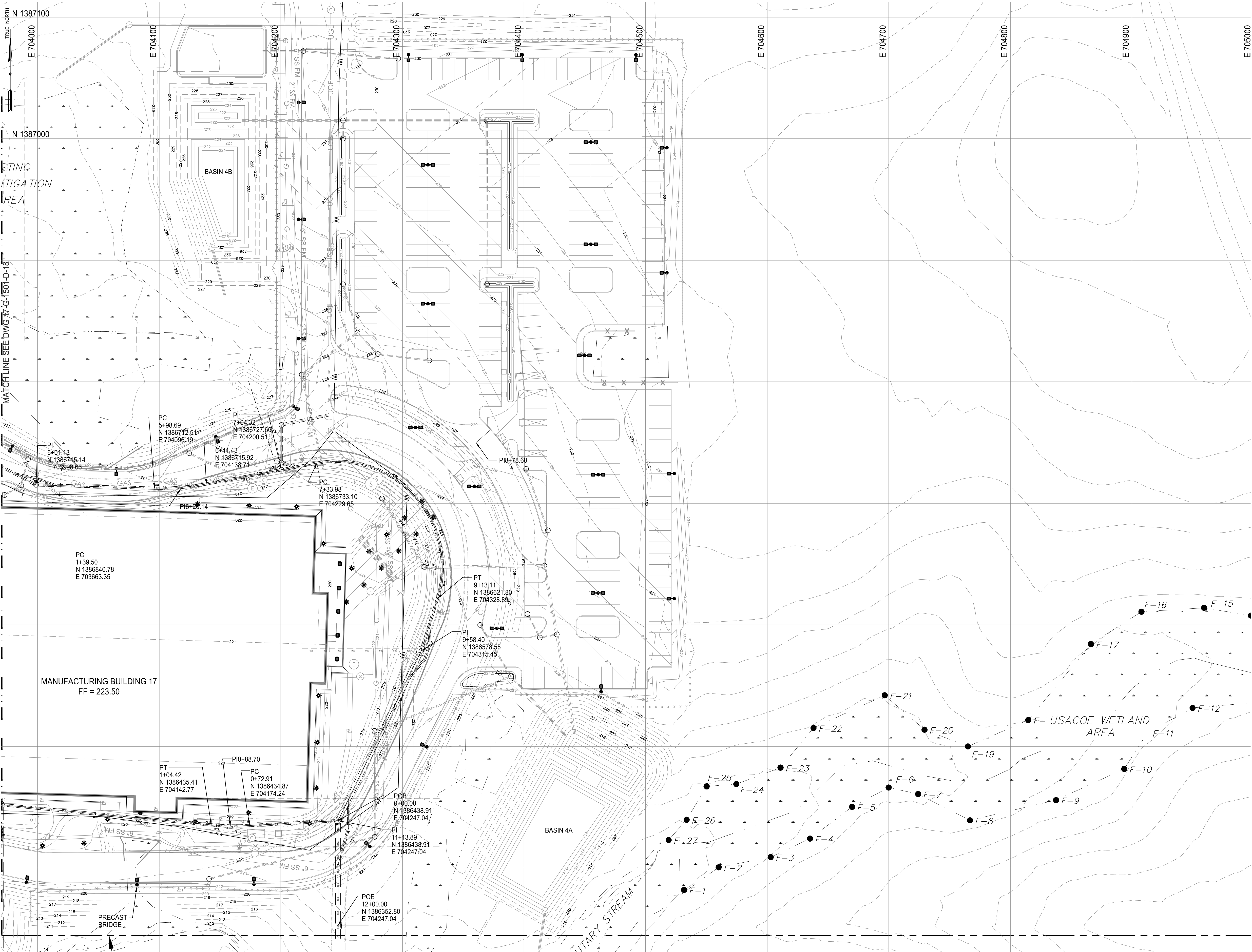
**SITE ELECTRICAL DUCTBANK LAYOUT**  
**SHEET 1**

File No.: 17-G-1501-D-18.DWG

Date: 15/10/2018

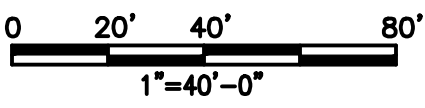
Drawing No.	17-G-1501-D-18
Old Drawing No.	
Revision: A	Sheet:





KEY PLAN  
SCALE: 1"=600'

- NOTES:
- FOR GENERAL NOTES AND LEGEND SEE DWG. 17-G-0000-D-2.
  - UNDERGROUND FACILITY AND UTILITY LOCATIONS SHOWN ARE NOT GUARANTEED, NOR IS THERE ANY GUARANTEE THAT ALL EXISTING UTILITIES WITHIN THE PROJECT AREA IS SHOWN. THE EXISTENCE OF ALL UNDERGROUND FACILITIES SHALL BE INVESTIGATED AND VERIFIED BY THE CONTRACTOR IN THE FIELD PRIOR TO COMMENCING WORK. THE CONTRACTOR SHALL DETERMINE THE EXACT LOCATION AND DEPTH OF ALL UNDERGROUND FACILITIES AND UTILITIES WHETHER FUNCTIONAL OR ABANDONED AND SHALL BE RESPONSIBLE FOR ANY DAMAGE CAUSED.
  - A MINIMUM OF TWO (2.0) FEET SEPARATION WITH EXISTING STRUCTURES OR UTILITIES SHALL BE MAINTAINED WHEN USING POWERED EXCAVATING EQUIPMENT. IF THIS SEPARATION CANNOT BE MAINTAINED THE CONTRACTOR SHALL USE HAND EXCAVATING TECHNIQUES TO EXPOSE AND COMPLETELY LOCATE THE ITEM PRIOR TO PROCEEDING WITH POWERED EXCAVATION EQUIPMENT. THE CONTRACTOR SHALL BE RESPONSIBLE FOR ALL REQUIRED SHORING AND BRACING, IF NEEDED.
  - DURING CONSTRUCTION, THE CONTRACTOR SHALL BE RESPONSIBLE FOR ANY AND ALL DAMAGE TO AND FOR MAINTENANCE AND PROTECTION OF EXISTING STRUCTURES OR UTILITIES REGARDLESS OF WHETHER THEY ARE SHOWN ON THE DRAWINGS OR IDENTIFIED BY SIEMENS IN THE FIELD.
  - ALL WORK IN THE PROJECT AREA MUST BE COORDINATED WITH REGENERON TO MINIMIZE ANY INTERRUPTION OF PLANT OPERATIONS.
  - THE CONTRACTOR SHALL NOTIFY THE RESPONSIBLE ENGINEER IMMEDIATELY IF ANY FIELD CONDITIONS ENCOUNTERED DIFFER MATERIALLY FROM THOSE REPRESENTED ON THE DRAWINGS OR IF SUCH CONDITIONS, IN THE CONTRACTOR'S OPINION, WOULD RENDER THE PROPOSED DESIGN INEFFECTIVE AND/OR INAPPROPRIATE.



Planning Board—Town of East Greenbush  
BY DIRECTION OF  
CHAIRMAN OF THE PLANNING  
BOARD THESE PLANS ARE APPROVED  
SEE FIRST SHEET FOR DATE & SIGNATURE

Rev #	Date:	Description	Drawn By:	Rev #	Date:	Description	Drawn By:
A	25 Oct 2018	ISSUED FOR PERMIT					

**CONFIDENTIAL**

THIS DRAWING IS THE PROPERTY OF  
REGENERON PHARMACEUTICALS, INC. THE  
INFORMATION CONTAINED HEREIN MAY NOT  
BE USED OR COPIED IN ANY MANNER  
WITHOUT THE PRIOR WRITTEN PERMISSION  
FROM REGENERON PHARMACEUTICALS, INC.

**REGENERON**

Regeneron Pharmaceuticals, Inc.  
81 Columbia Turnpike  
Rensselaer, NY 12144

Scale: 1"=40'

**SITE ELECTRICAL DUCTBANK LAYOUT**

**SHEET 2**

File No.: **17-G-1501-D-19.DWG**

Date: **15/10/2018**

Drawing No.  
**17-G-1501-D-19**

Old Drawing No.

Revision: **A**

Sheet: