

- NOTES:**
- DURING CONSTRUCTION, THE CONTRACTOR SHALL BE RESPONSIBLE FOR ANY AND ALL DAMAGE TO AND FOR MAINTENANCE AND PROTECTION OF EXISTING STRUCTURES OR UTILITIES REGARDLESS OF WHETHER THEY ARE SHOWN ON THE DRAWINGS. OR IDENTIFIED BY REGENERON IN THE FIELD.
 - ALL WORK IN THE PROJECT AREA MUST BE COORDINATED WITH SIEMENS TO MINIMIZE ANY INTERRUPTION OF PLANT OPERATIONS.
 - THE CONTRACTOR SHALL NOTIFY THE RESPONSIBLE ENGINEER IMMEDIATELY IF ANY FIELD CONDITIONS ENCOUNTERED DIFFER MATERIALLY FROM THOSE REPRESENTED ON THE DRAWINGS OR IF SUCH CONDITIONS, IN THE CONTRACTOR'S OPINION, WOULD RENDER THE PROPOSED DESIGN INEFFECTIVE AND/OR INAPPROPRIATE.
 - CONTRACTOR'S BULK STORAGE AND MATERIAL LAYDOWN WILL BE PERMITTED IN SPECIFIED AREAS ON-SITE AS DESIGNATED BY THE CONSTRUCTION MANAGER. THE CONTRACTOR IS RESPONSIBLE FOR THE SECURITY OF MATERIALS AND EQUIPMENT. CLEAN-UP OF THIS AREA WILL BE TO "AS FOUND" OR BETTER CONDITION IMMEDIATELY FOLLOWING THE PROJECT.
 - THE CONTRACTOR IS RESPONSIBLE FOR CLEANING ALL ROADS AND PAVED AREAS TO REMOVE DIRT AND/OR CONSTRUCTION DEBRIS CAUSED BY THE WORK. THE CONTRACTOR MAY BE REQUESTED BY REGENERON TO PERFORM CLEAN-UP OUTSIDE OF THE WORK AREA AT THE CONTRACTOR'S COST.
 - ALL LITTER, CONSTRUCTION DEBRIS AND CONSTRUCTION CHEMICALS EXPOSED TO WEATHER SHALL BE REMOVED PRIOR TO ANTICIPATED RAIN EVENTS OR OTHERWISE PROTECTED SUCH THAT THEY ARE PREVENTED FROM BECOMING A POLLUTANT SOURCE.
 - THE CONTRACTOR IS RESPONSIBLE FOR IMPLEMENTATION AND MAINTENANCE OF ALL MEASURES NECESSARY TO CONTROL, FILTER OR PREVENT SEDIMENT FROM LEAVING THE PROJECT AREA. IF SEDIMENT SHOULD ESCAPE, ACCUMULATIONS OF SEDIMENT THAT HAVE NOT REACHED A STREAM MUST BE REMOVED AT A FREQUENCY SUFFICIENT TO MINIMIZE ANY ADVERSE IMPACT (E.G. SEDIMENT THAT HAS ESCAPED THE SITE AND COLLECTED IN THE STREET MUST BE REMOVED SO THAT IT IS NOT CONVEYED TO A STORM SEWER SYSTEM OR WATERCOURSE BY THE NEXT RAIN).
 - ALL SUBCONTRACTORS AND THEIR SUBCONTRACTORS ARE ALSO SUBJECT TO THE ABOVE REQUIREMENTS.
 - FOR GENERAL NOTES REFERENCE DRAWING 17-G-0000-D-2.
 - FOR EXISTING EROSION CONTROL MEASURES SEE DRAWING 17-G-1201-D-01, AND -02

LEGEND

- LD LIMIT OF DISTURBANCE
- CONSTRUCTION ENTRANCE
- ROCK CHECK DAMN
- OUTLET PROTECTION
- INLET PROTECTION
- SEDIMENT FENCE
- FLOW DIRECTION
- TEMPORARY DIVERSION DITCH

0 20' 40' 80'
1"=40'-0"

Planning Board—Town of East Greenbush
BY DIRECTION OF
CHAIRMAN OF THE PLANNING
BOARD THESE PLANS ARE APPROVED
SEE FIRST SHEET FOR DATE & SIGNATURE

Rev #	Date:	Description	Drawn By:	Rev #	Date:	Description	Drawn By:
A	08 Oct 2018	Issued for Permit	JR				
B	25 Oct 2018	ISSUED FOR PERMIT					

CONFIDENTIAL

THIS DRAWING IS THE PROPERTY OF REGENERON PHARMACEUTICALS, INC. THE INFORMATION CONTAINED HEREIN MAY NOT BE USED OR COPIED IN ANY MANNER WITHOUT THE PRIOR WRITTEN PERMISSION FROM REGENERON PHARMACEUTICALS, INC.

REGENERON

Regeneron Pharmaceuticals, Inc.
81 Columbia Turnpike
Rensselaer, NY 12144

SITE EROSION AND SEDIMENTATION CONTROL PLAN

SHEET 1

Drawing No. **17-G-1201-D-10**

Old Drawing No.

Scale: 1"=40'

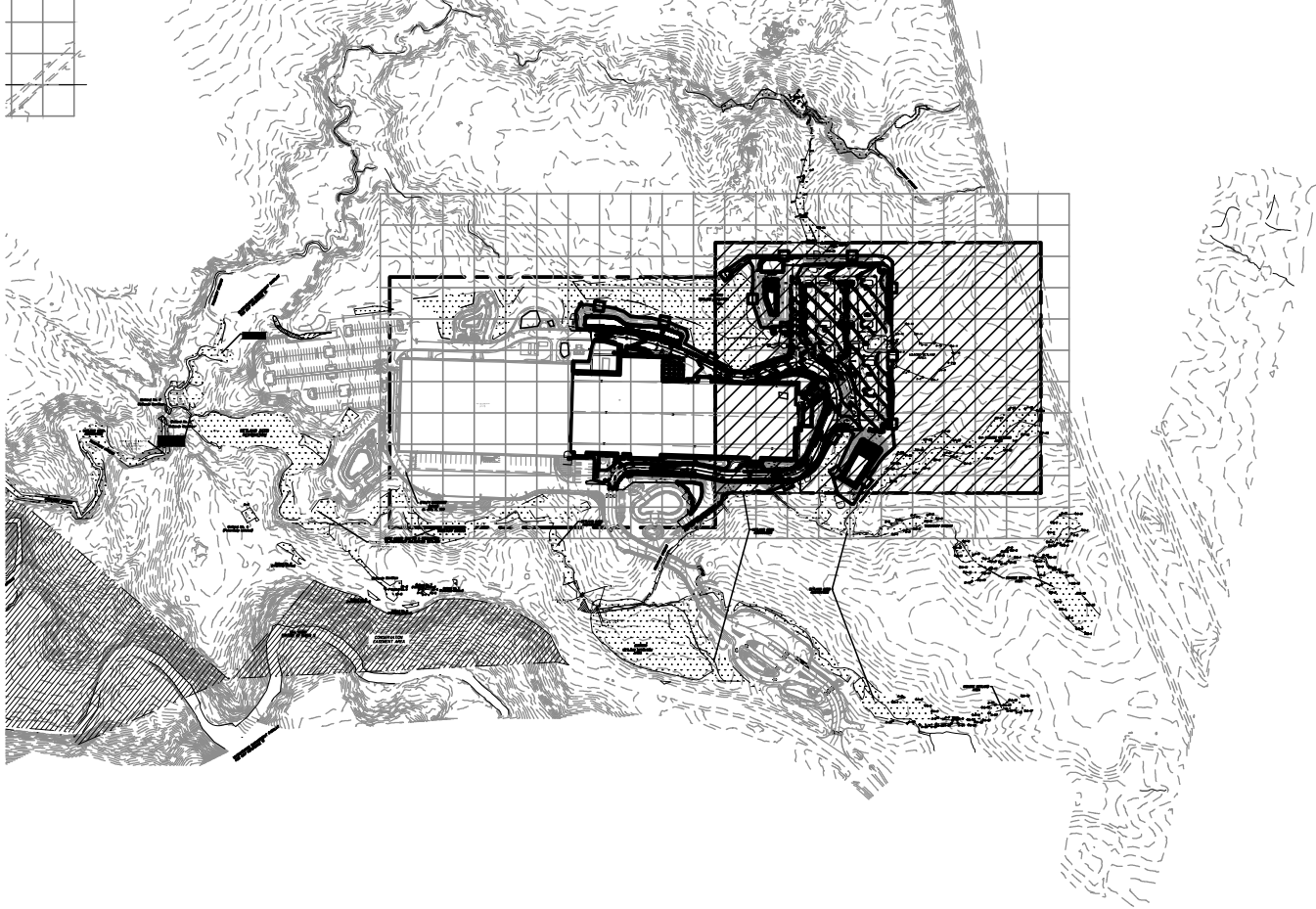
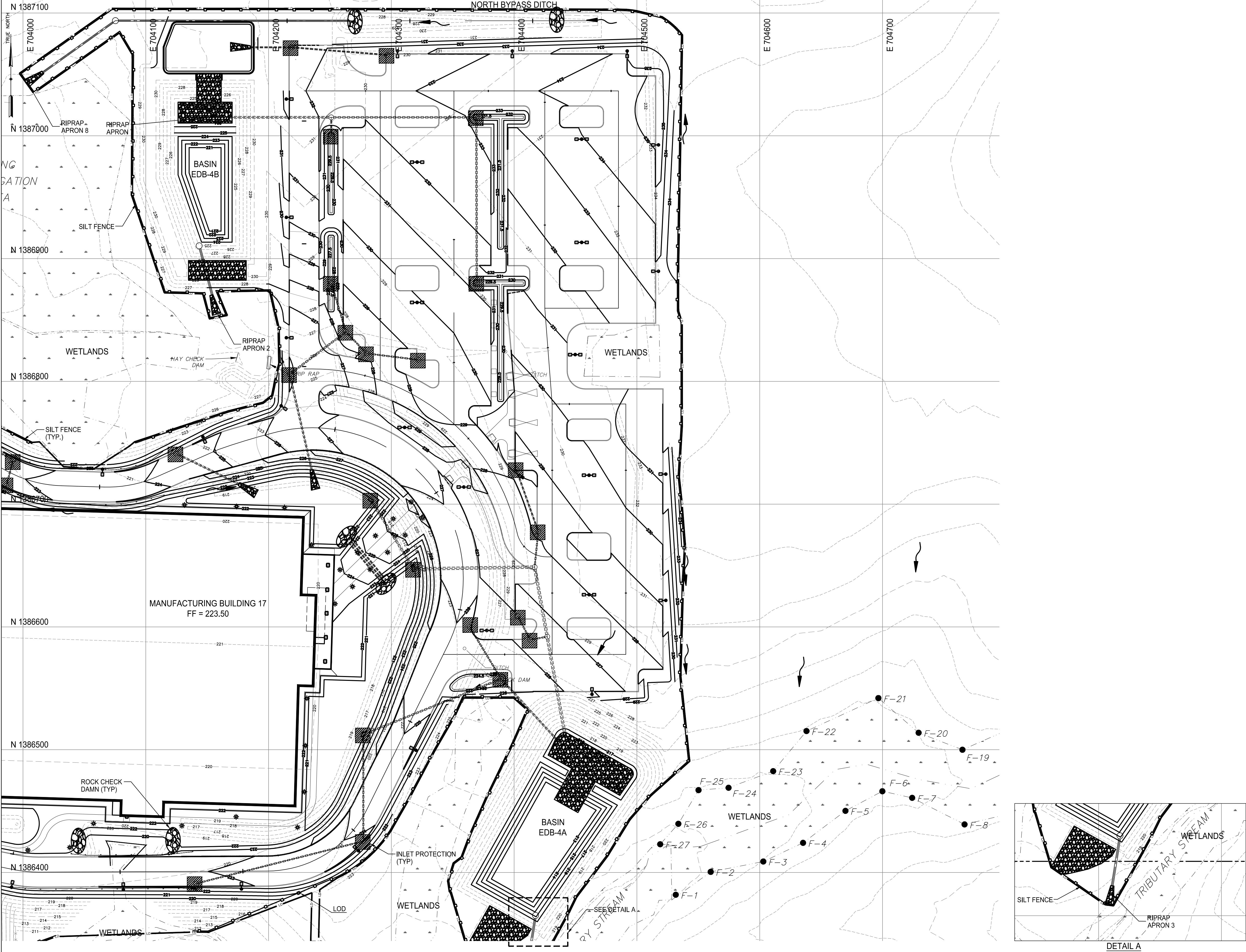
Bldg.:

File No.: **17-G-1201-D-10.DWG**

Date: **30/10/2018**

Revision: **B**

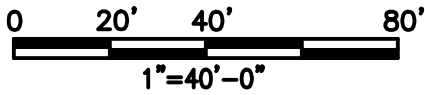
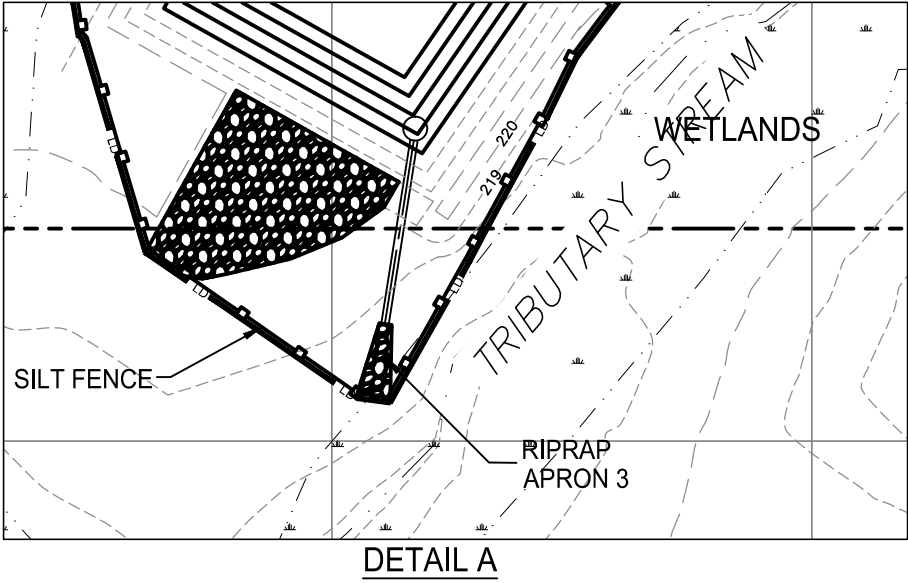
Sheet:



KEY PLAN
SCALE: 1"=600'

- NOTES:
- DURING CONSTRUCTION, THE CONTRACTOR SHALL BE RESPONSIBLE FOR ANY AND ALL DAMAGE TO AND FOR MAINTENANCE AND PROTECTION OF EXISTING STRUCTURES OR UTILITIES REGARDLESS OF WHETHER THEY ARE SHOWN ON THE DRAWINGS. OR IDENTIFIED BY REGENERON IN THE FIELD.
 - ALL WORK IN THE PROJECT AREA MUST BE COORDINATED WITH SIEMENS TO MINIMIZE ANY INTERRUPTION OF PLANT OPERATIONS.
 - THE CONTRACTOR SHALL NOTIFY THE RESPONSIBLE ENGINEER IMMEDIATELY IF ANY FIELD CONDITIONS ENCOUNTERED DIFFER MATERIALLY FROM THOSE REPRESENTED ON THE DRAWINGS OR IF SUCH CONDITIONS, IN THE CONTRACTOR'S OPINION, WOULD RENDER THE PROPOSED DESIGN INEFFECTIVE AND/OR INAPPROPRIATE.
 - CONTRACTOR'S BULK STORAGE AND MATERIAL LAYDOWN WILL BE PERMITTED IN SPECIFIED AREAS ON-SITE AS DESIGNATED BY THE CONSTRUCTION MANAGER. THE CONTRACTOR IS RESPONSIBLE FOR THE SECURITY OF MATERIALS AND EQUIPMENT. CLEAN-UP OF THIS AREA WILL BE TO "AS FOUND" OR BETTER CONDITION IMMEDIATELY FOLLOWING THE PROJECT.
 - THE CONTRACTOR IS RESPONSIBLE FOR CLEANING ALL ROADS AND PAVED AREAS TO REMOVE DIRT AND/OR CONSTRUCTION DEBRIS CAUSED BY THE WORK. THE CONTRACTOR MAY BE REQUESTED BY REGENERON TO PERFORM CLEAN-UP OUTSIDE OF THE WORK AREA AT THE CONTRACTOR'S COST.
 - ALL LITTER, CONSTRUCTION DEBRIS AND CONSTRUCTION CHEMICALS EXPOSED TO WEATHER SHALL BE REMOVED PRIOR TO ANTICIPATED RAIN EVENTS OR OTHERWISE PROTECTED SUCH THAT THEY ARE PREVENTED FROM BECOMING A POLLUTANT SOURCE.
 - THE CONTRACTOR IS RESPONSIBLE FOR IMPLEMENTATION AND MAINTENANCE OF ALL MEASURES NECESSARY TO CONTROL, FILTER OR PREVENT SEDIMENT FROM LEAVING THE PROJECT AREA. IF SEDIMENT SHOULD ESCAPE, ACCUMULATIONS OF SEDIMENT THAT HAVE NOT REACHED A STREAM MUST BE REMOVED AT A FREQUENCY SUFFICIENT TO MINIMIZE ANY ADVERSE IMPACT (E.G. SEDIMENT THAT HAS ESCAPED THE SITE AND COLLECTED IN THE STREET MUST BE REMOVED SO THAT IT IS NOT CONVEYED TO A STORM SEWER SYSTEM OR WATERCOURSE BY THE NEXT RAIN).
 - ALL SUBCONTRACTORS AND THEIR SUBCONTRACTORS ARE ALSO SUBJECT TO THE ABOVE REQUIREMENTS.
 - FOR GENERAL NOTES REFERENCE DRAWING 17-G-0000-D-2.
 - FOR EXISTING EROSION CONTROL MEASURES SEE DRAWING 17-G-1201-D-01, AND -02

- LEGEND
- LD — LIMIT OF DISTURBANCE
 - CONSTRUCTION ENTRANCE
 - ROCK CHECK DAMN
 - OUTLET PROTECTION
 - INLET PROTECTION
 - SEDIMENT FENCE
 - FLOW DIRECTION
 - TEMPORARY DIVERSION DITCH



Planning Board—Town of East Greenbush
BY DIRECTION OF
CHAIRMAN OF THE PLANNING
BOARD THESE PLANS ARE APPROVED
SEE FIRST SHEET FOR DATE & SIGNATURE

Rev #	Date:	Description	Drawn By:	Rev #	Date:	Description	Drawn By:
A	08 Oct 2018	Issued for Permit	JR				
B	25 Oct 2018	ISSUED FOR PERMIT					

CONFIDENTIAL

THIS DRAWING IS THE PROPERTY OF REGENERON PHARMACEUTICALS, INC. THE INFORMATION CONTAINED HEREIN MAY NOT BE USED OR COPIED IN ANY MANNER WITHOUT THE PRIOR WRITTEN PERMISSION FROM REGENERON PHARMACEUTICALS, INC.

REGENERON
Regeneron Pharmaceuticals, Inc.
81 Columbia Turnpike
Rensselaer, NY 12144

Scale: 1"=40'

Bldg.:

SITE EROSION AND SEDIMENTATION CONTROL PLAN
SHEET 2

File No.: 17-G-1201-D-11.DWG

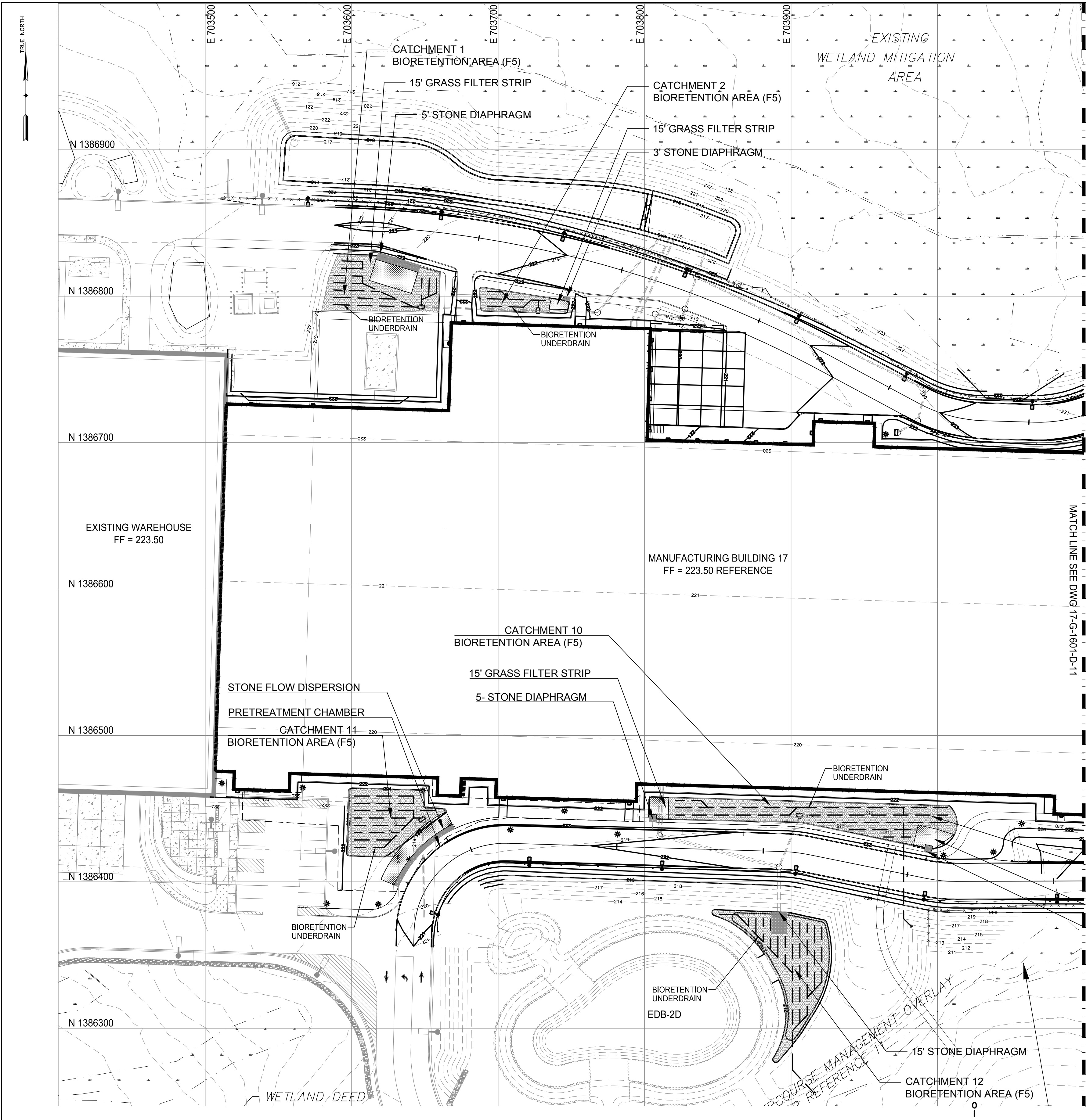
Date: 30/10/2018

Revision: B

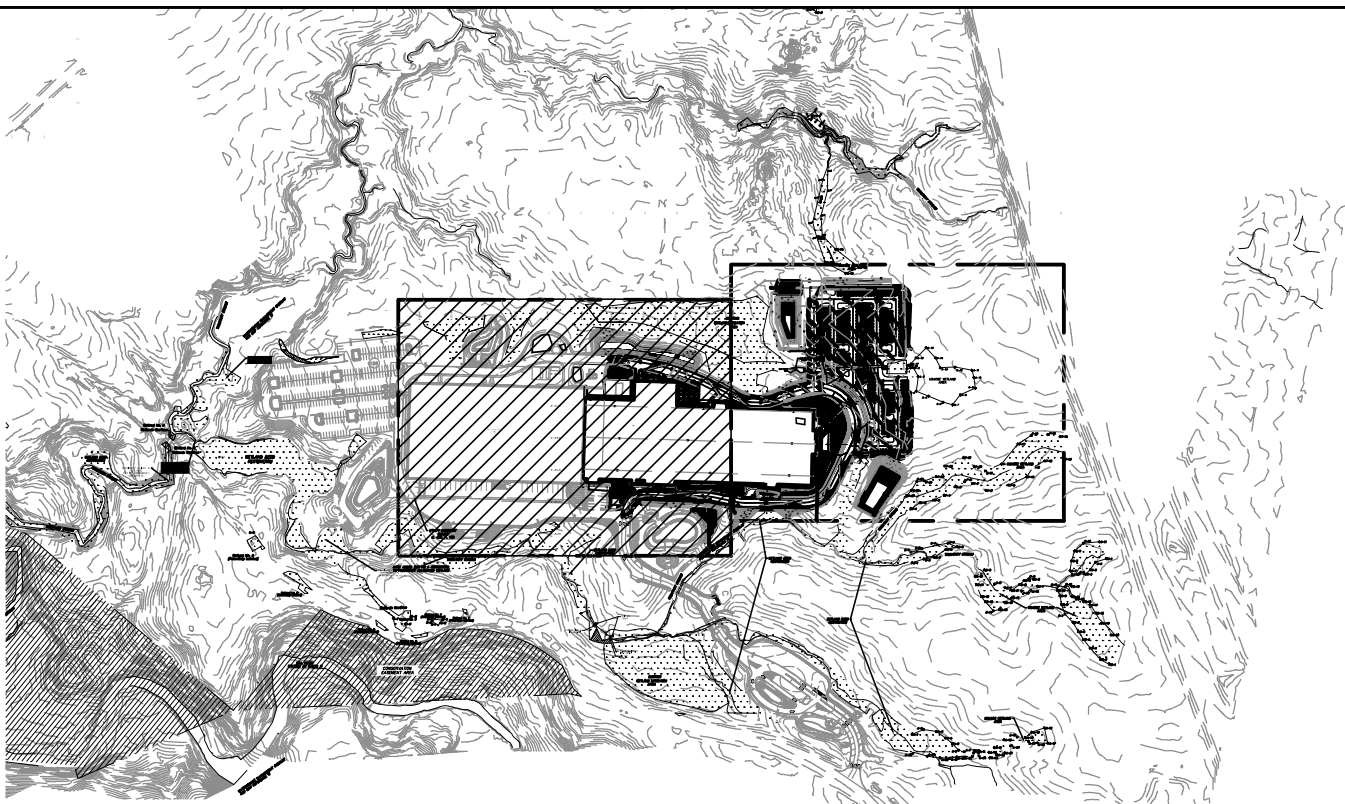
Sheet:

Drawing No.
17-G-1201-D-11

Old Drawing No.



CATCHMENTS	BOTTOM ELEV	OVERFLOW ELEV	UNDER-DRAIN INV. ELEV
1	221	221.5	217.5
2	221	221.5	217.5
3	229.5	230	226.17
4	231.5	232	228
5	229.5	230	226.17
6	221	221.5	217.5
7	—	—	—
8	221	221.5	217.5
9	224.5	225	221
10	221	221.5	217.5
11	221	221.5	217.5
12	212.5	213	209
13	229.25	229.75	225.75

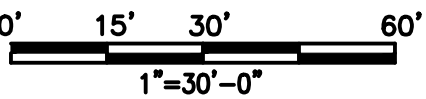


KEY PLAN
SCALE: 1"=600'

- NOTES:
- FOR GENERAL NOTES AND LEGEND SEE DRAWING 17-G-0000-D-2.
 - SITE LAYOUT PLANS REFERENCE DRAWING 17-G-1301-D-30, 31,40 AND 41.
 - REFERENCE DRAWING 17-G-1301-D-10 AND 11 FOR SITE GRADING PLANS
 - REFERENCE DRAWING 17-G-1305-D-10 FOR SITE DETAIL
 - FOR GUIDE RAIL DETAILS REFERENCE STATE OF NEW YORK D.O.T. WEEK POST CORRUGATED-BEAM GUIDE RAIL DRAWINGS, SHEETS 1, 2 AND 3 - 606-07
 - DIMENSION TO BUILDING IS TO FACE OF BUILDING U.N.O.
 - DIMENSIONS TO CURB IS TO FACE OF CURB
 - TYPICAL PARKING STALL DIMENSIONS IS 18'-0" IN DEPTH AND 9'-4" IN WIDTH
 - FOR ZONING INFORMATION REFERENCE DRAWING 17-G-000-D-10
 - REFERENCE DRAWINGS 17G-1501-D-12 AND 13 FOR STORM SEWER STRUCTURE LOCATION AND STORM SEWER PIPING
 - REFERENCE DRAWING 17-G-1302-D-10 FOR ROAD PROFILES
 - INFORMATION SHOWN FOR THE EXISTING WAREHOUSE BUILDING AND SURROUNDING SITE IMPROVEMENTS REFLECT AS-DESIGNED DOCUMENTS AND MAY NOT ACCURATELY REFLECT AS-BUILT INFORMATION. CONTRACTOR TO VERIFY ALL RELEVANT INFORMATION REGARDING THE WAREHOUSE AND SURROUNDING SITE IMPROVEMENTS PRIOR TO CONSTRUCTION
 - DRAWINGS SHOW EARLY GRADING AS DESIGNED INFORMATION AS EXISTING. REFERENCE BUILDING 17 EARLY GRADING PERMIT PACKAGE FOR EARLY GRADING INFORMATION.
 - INFORMATION CONCERNING SITE TOPOGRAPHY, EXISTING UTILITIES, PROPERTY LINE AND WETLANDS HAS BEEN PROVIDED BY REGENERON.
 - SITE PROPERTY LINE ASSUMES THAT LOTS OWNED BY REGENERON HAVE BEEN CONSOLIDATED INTO A SINGLE LOT.
 - REFERENCE DRAWING 17-G-000-D-2 FOR GENERAL NOTES
 - BASIS OF BEARINGS IS NEW YORK STATE PLANE COORDINATES SYSTEM EAST ZONE. HORIZONTAL DATUM IS NAD83
 - REFERENCE ARCHITECTURAL DRAWINGS FOR BUILDING LAYOUT INFORMATION
 - DURING CONSTRUCTION, THE CONTRACTOR SHALL BE RESPONSIBLE FOR ANY AND ALL DAMAGE TO AND FOR MAINTENANCE AND PROTECTION OF EXISTING STRUCTURES OR UTILITIES REGARDLESS OF WHETHER THEY ARE SHOWN ON THE DRAWINGS OR IDENTIFIED BY REGENERON IN THE FIELD
 - ALL GRADING WORK IN THE PROJECT AREA SHALL BE COORDINATED WITH REGENERON TO MINIMIZE INTERRUPTIONS TO EXISTING OPERATIONS
 - THE CONTRACTOR SHALL NOTIFY THE RESPONSIBLE ENGINEER IMMEDIATELY IF ANY FIELD CONDITIONS ENCOUNTERED DIFFER MATERIALLY FROM THOSE REPRESENTED ON THE DRAWINGS OR IF SUCH CONDITIONS, IN THE CONTRACTOR'S OPINION, WOULD RENDER THE PROPOSED DESIGN INEFFECTIVE AND/OR INAPPROPRIATE
 - REFERENCE DRAWINGS 17-G-1601-D-10 AND 11 FOR INFORMATION ON BIORETENTION AREAS
 - EXISTING GRADES REFLECT AS DESIGNED EARLY GRADING, REFERENCE DRAWINGS 17-G-1301-D-5 AND 6 FOR ROUGH GRADE ELEVATIONS
 - REFERENCE DRAWINGS 17-G-1201-D-1 AND 2 FOR INITIAL EROSION AND SEDIMENTATION CONTROL PLANS
 - ALL CONSTRUCTION STONE SURFACE AREAS ARE TEMPORARY, AND SHALL BE RESTORED TO GRASS SURFACE CONDITIONS WITHIN 6 MONTH OF PROJECT COMPLETION.
 - REFERENCE NEW YORK STATE STORMWATER MANAGEMENT DESIGN MANUAL FOR ADDITIONAL REQUIREMENTS CONCERNING BIORETENTION AREAS CHAPTER 6 SECTION 6.4 STORMWATER FILTERING SYSTEMS

LEGEND

- BIORETENTION AREA
- FILTER STRIP AREA
- STONE DIAPHRAGM



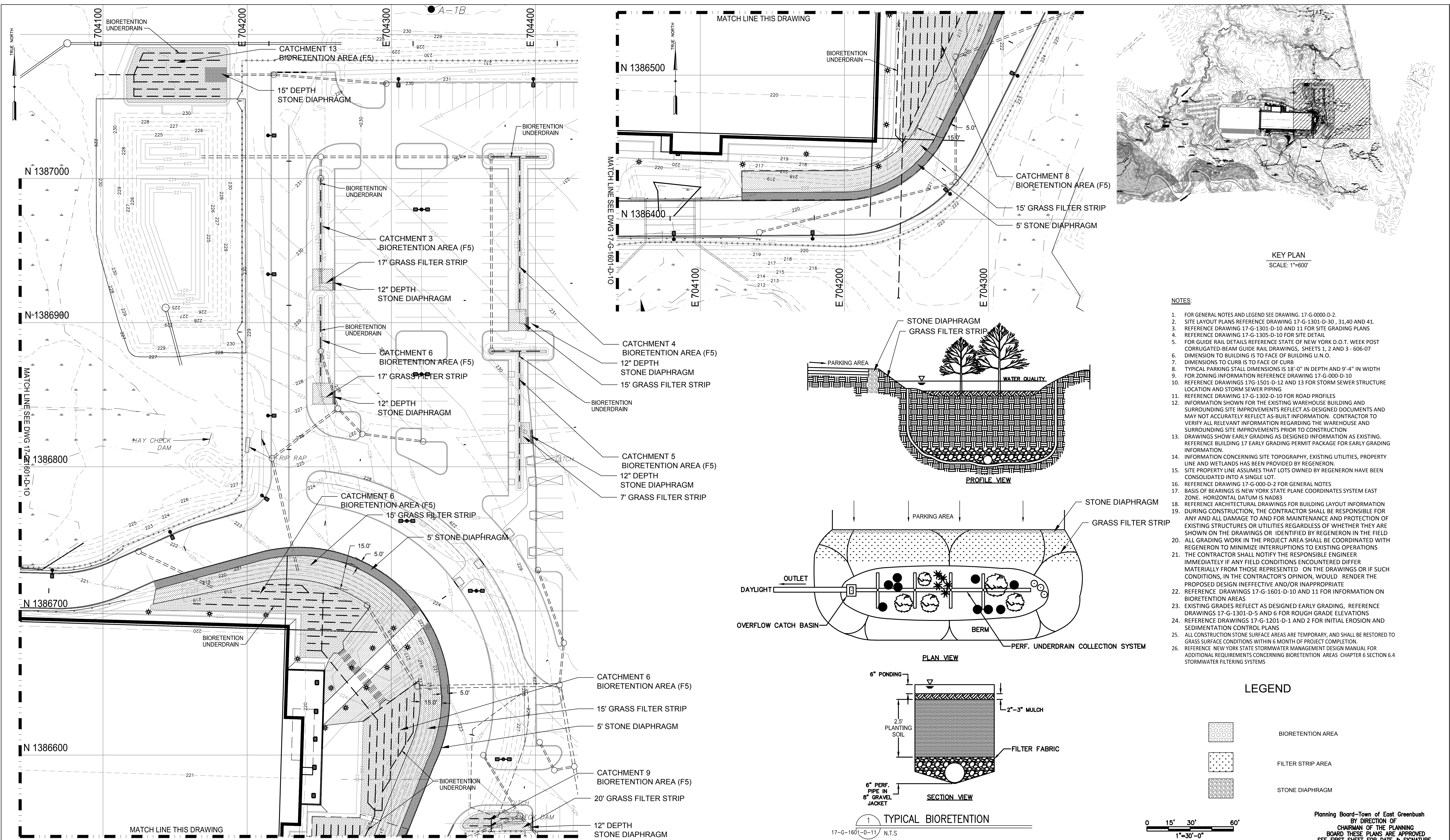
Planning Board—Town of East Greenbush
BY DIRECTION OF
CHAIRMAN OF THE PLANNING
BOARD THESE PLANS ARE APPROVED
SEE FIRST SHEET FOR DATE & SIGNATURE

Rev #	Date:	Description	Drawn By:	Rev #	Date:	Description	Drawn By:
A	08 Oct 2018	Issued for Permit	JR				
B	25 Oct 2018	ISSUED FOR PERMIT					

CONFIDENTIAL

THIS DRAWING IS THE PROPERTY OF REGENERON PHARMACEUTICALS, INC. THE INFORMATION CONTAINED HEREIN MAY NOT BE USED OR COPIED IN ANY MANNER WITHOUT THE PRIOR WRITTEN PERMISSION FROM REGENERON PHARMACEUTICALS, INC.

REGENERON		SITE BIORETENTION PLAN SHEET 1		Drawing No.	
Regeneron Pharmaceuticals, Inc. 81 Columbia Turnpike Rensselaer, NY 12144				17-G-1601-D-10	
Scale: 1"=30'		Bldg.:		Old Drawing No.	
File No.: 17-G-1601-D-10.DWG		Date: 30/10/2018		Revision: B	Sheet:



Rev #	Date:	Description	Drawn By:	Rev #	Date:	Description	Drawn By:
A	08 Oct 2018	Issued for Permit	JR				
B	25 Oct 2018	ISSUED FOR PERMIT					

CONFIDENTIAL

THIS DRAWING IS THE PROPERTY OF REGENERON PHARMACEUTICALS, INC. THE INFORMATION CONTAINED HEREIN MAY NOT BE USED OR COPIED IN ANY MANNER WITHOUT THE PRIOR WRITTEN PERMISSION FROM REGENERON PHARMACEUTICALS, INC.

REGENERON

Regeneron Pharmaceuticals, Inc.
81 Columbia Turnpike
Rensselaer, NY 12144

SITE BIORETENTION PLAN SHEET 2

Scale: 1"=30'

Bldg.:

File No.: 17-G-1601-D-11.DWG

Date: 30/10/2018

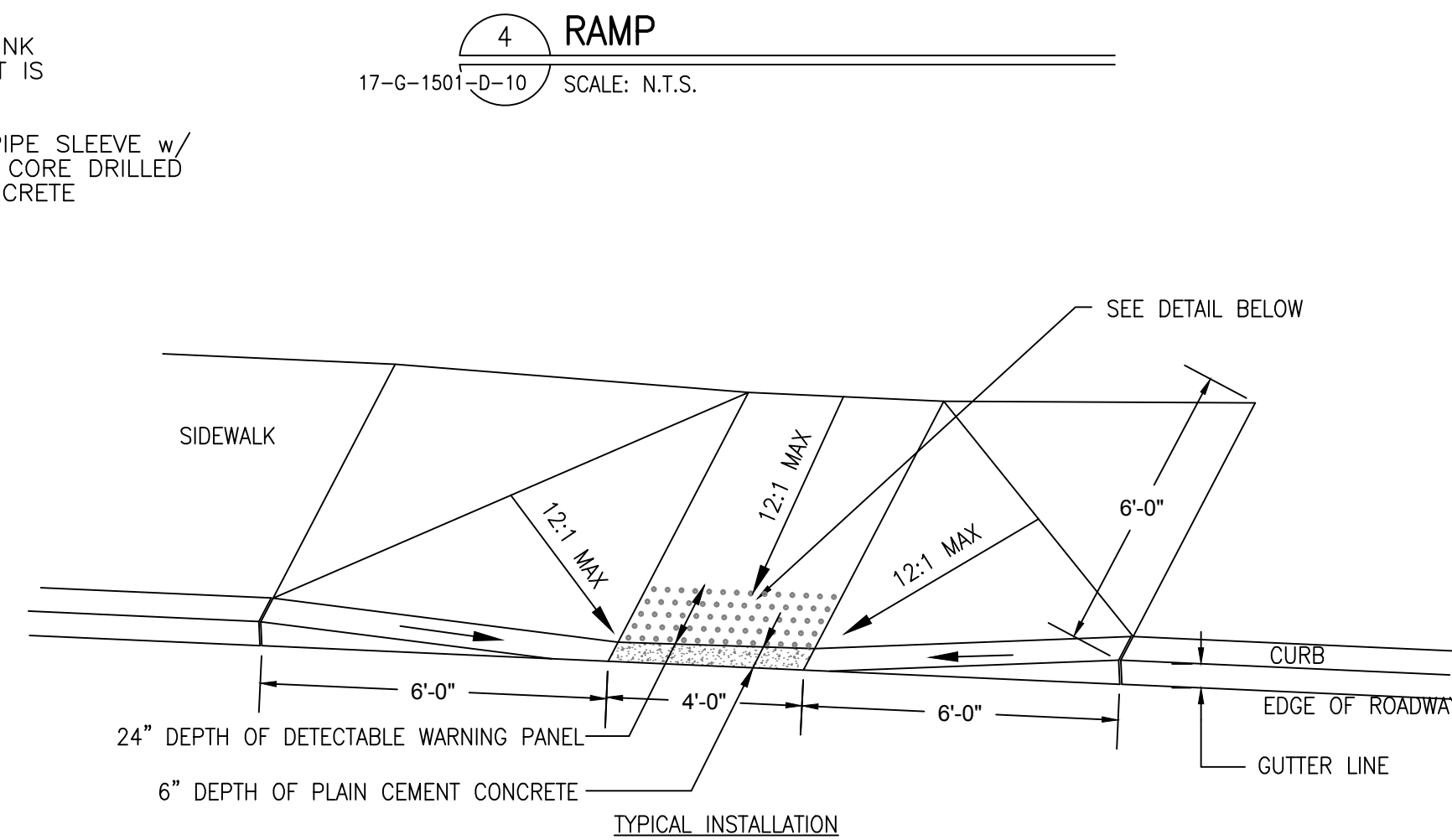
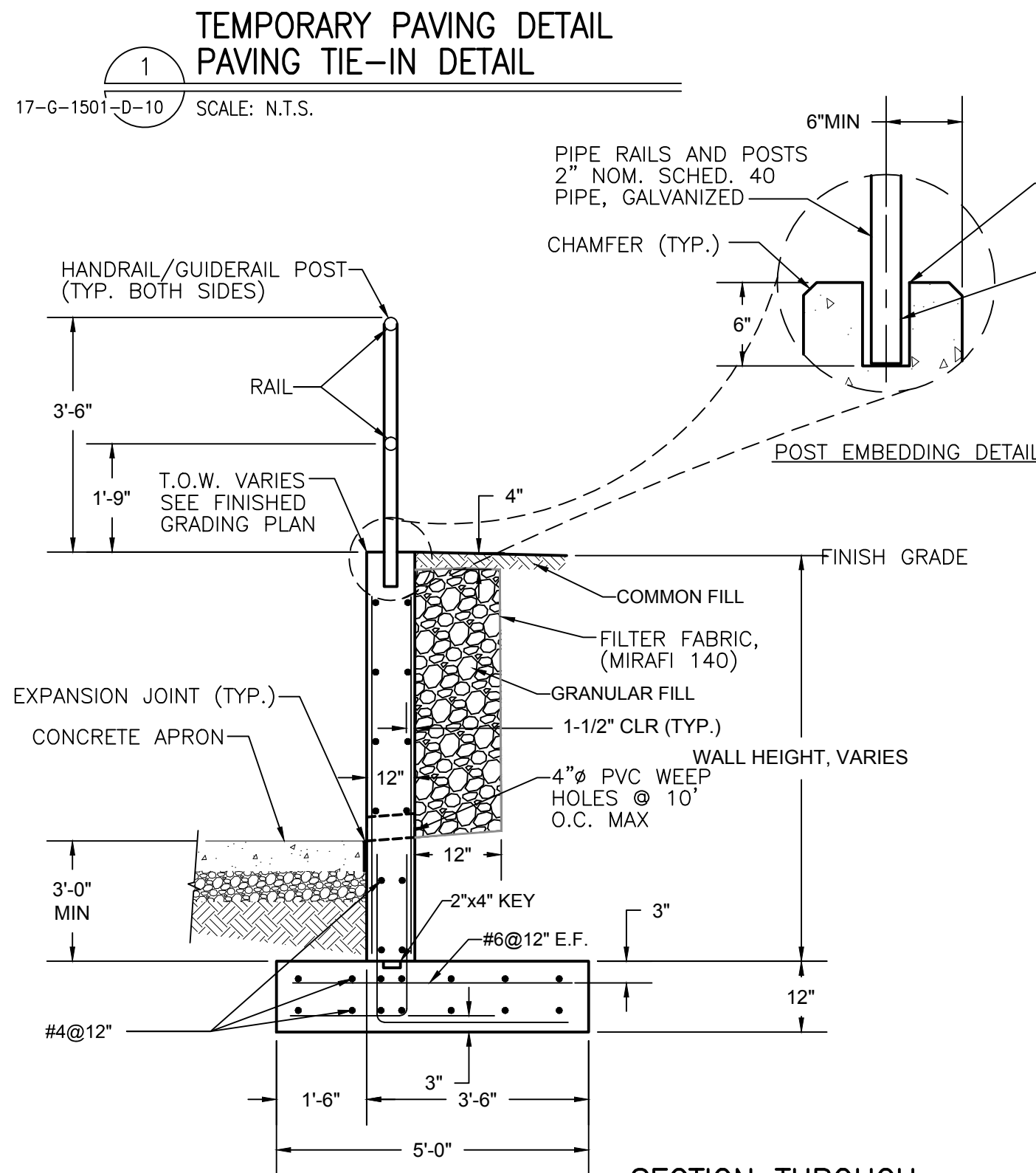
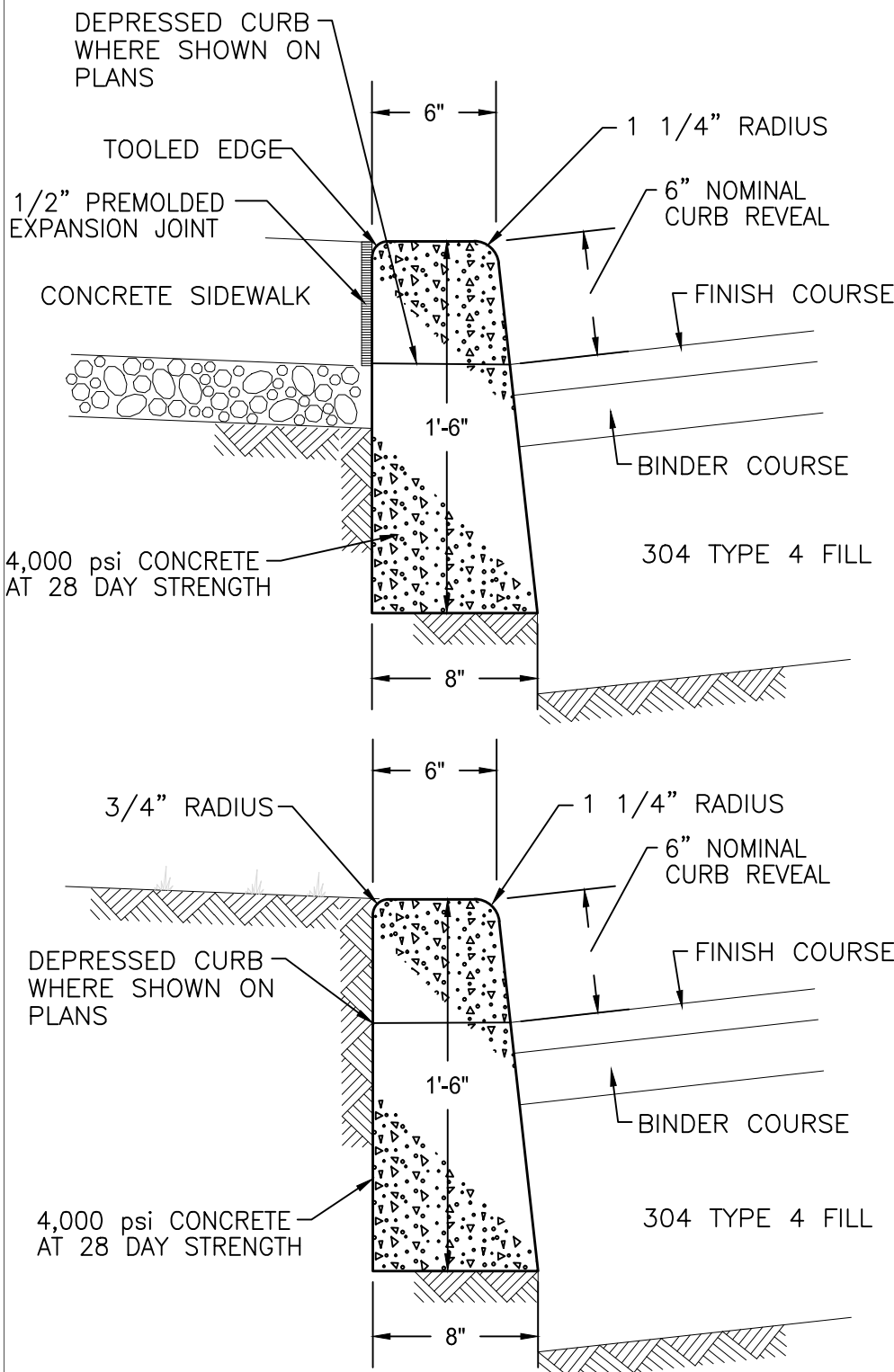
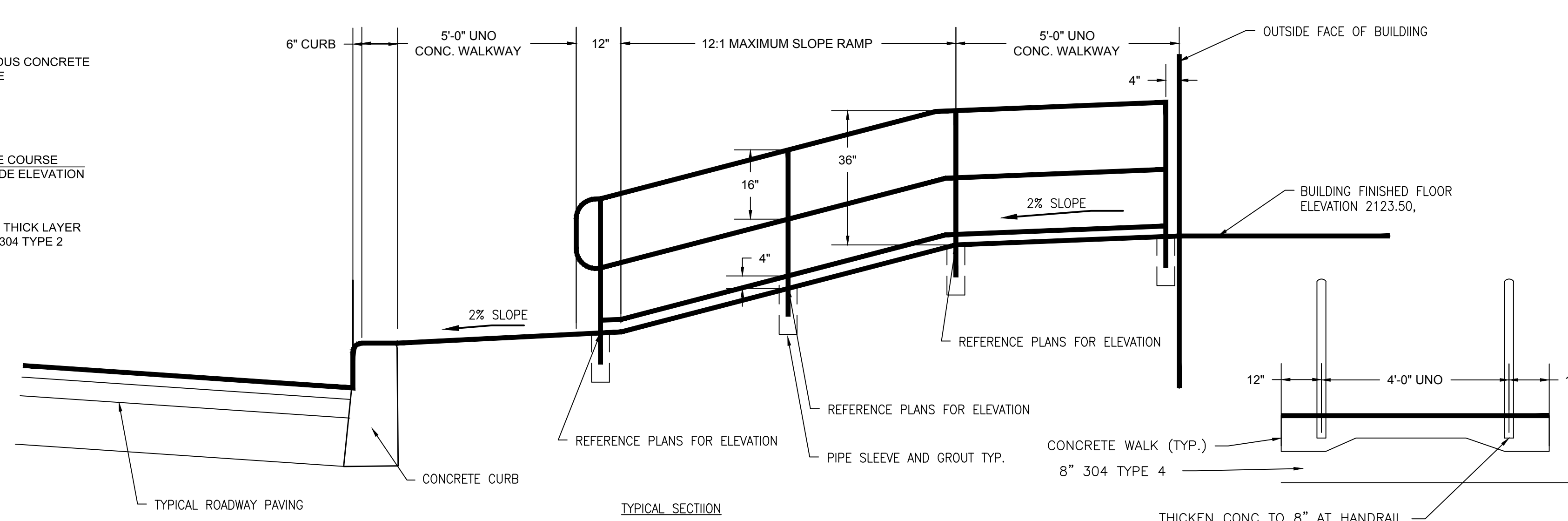
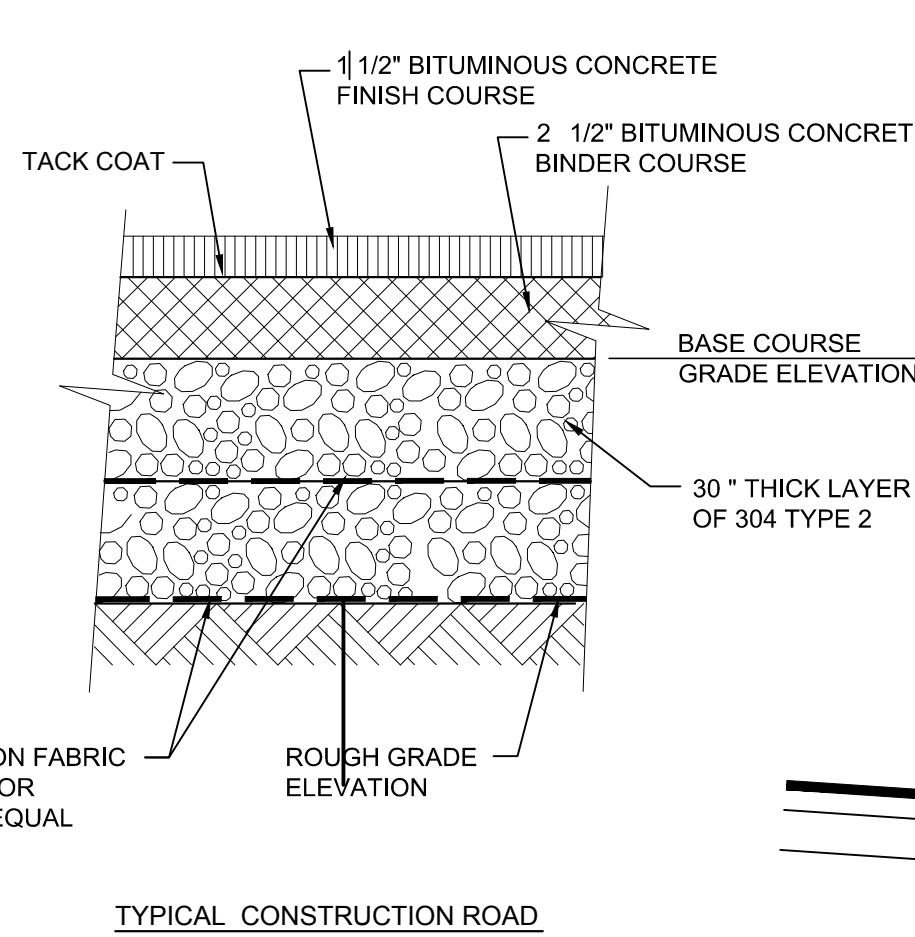
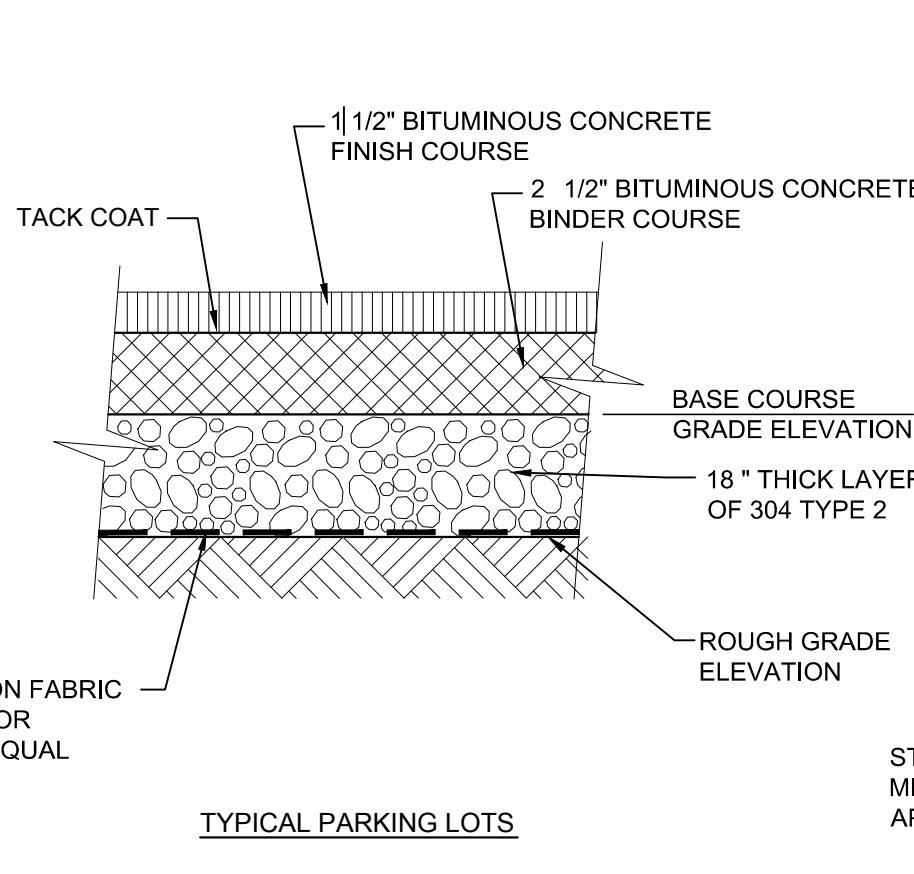
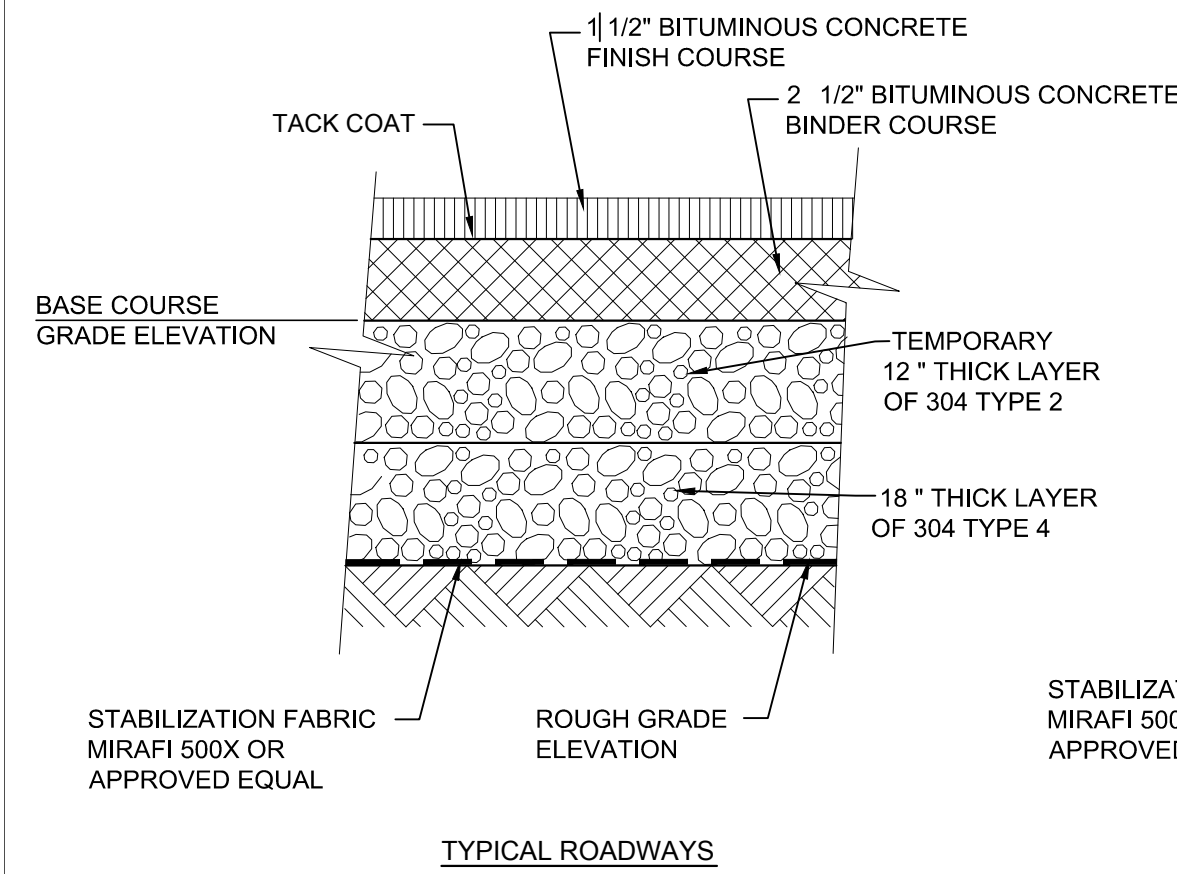
Drawing No.

17-G-1601-D-11

Old Drawing No.

Revision: B

Sheet:

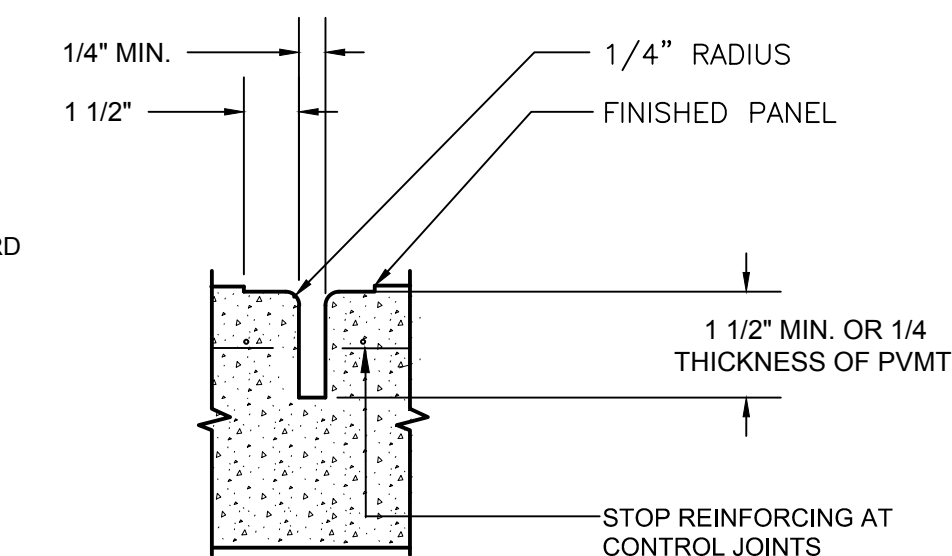
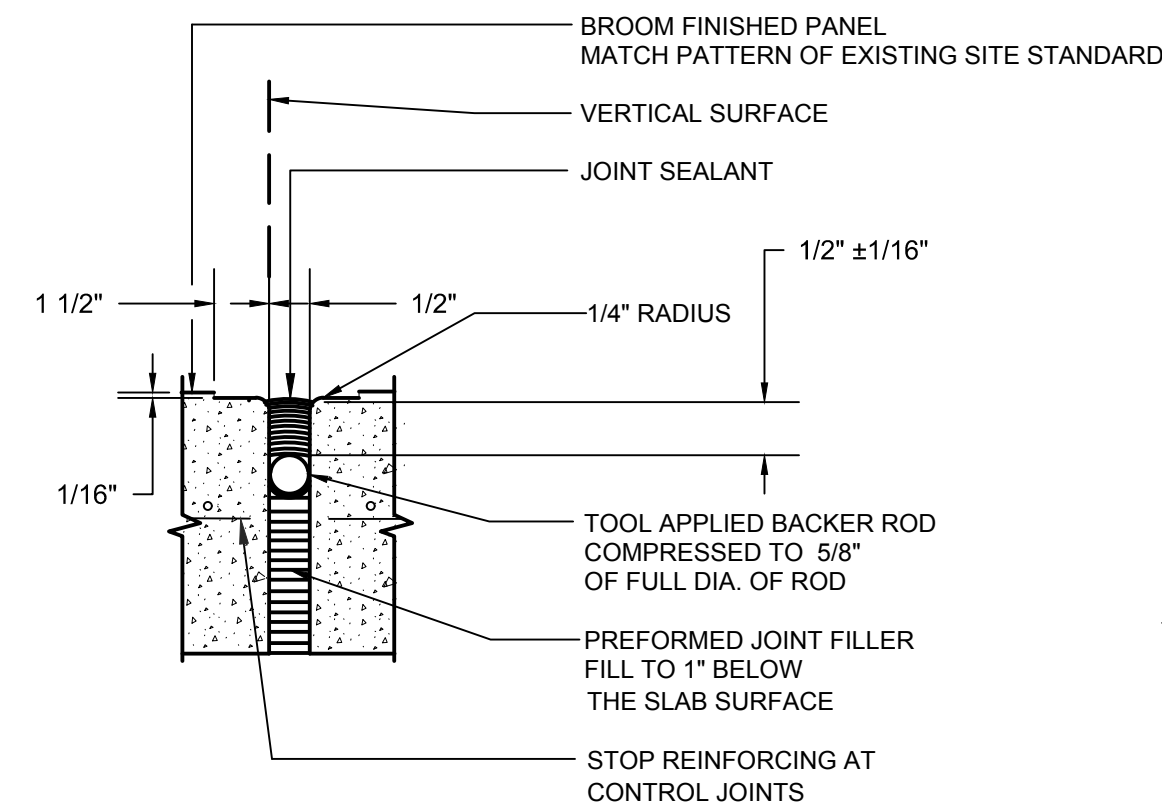
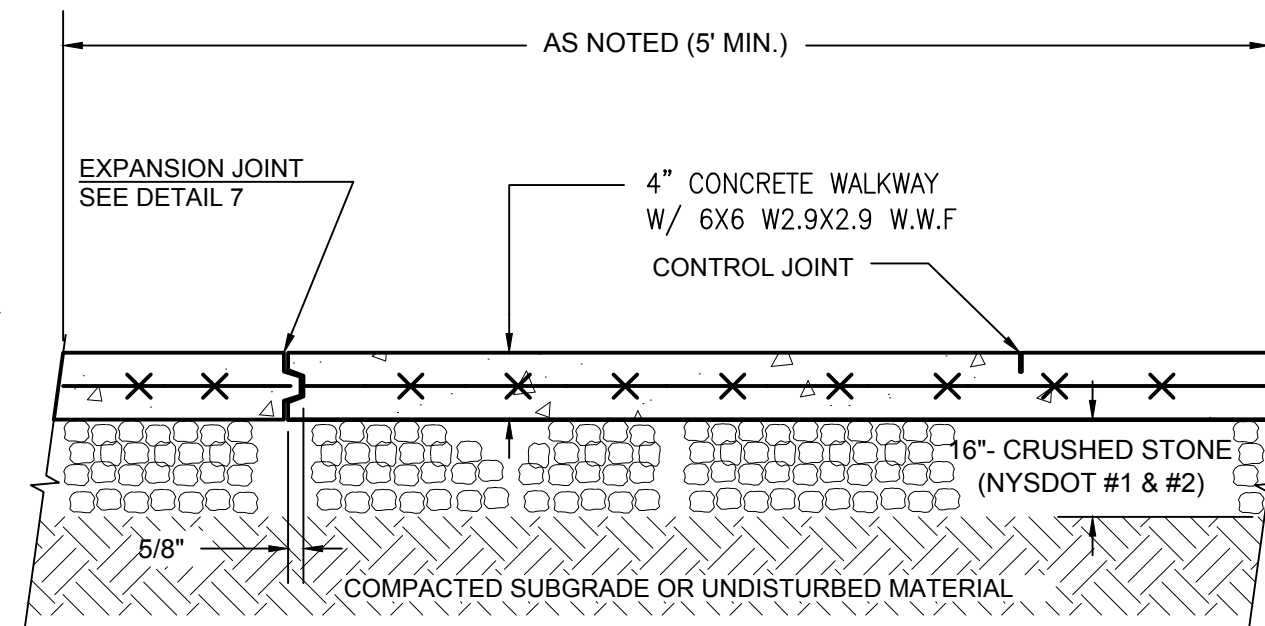
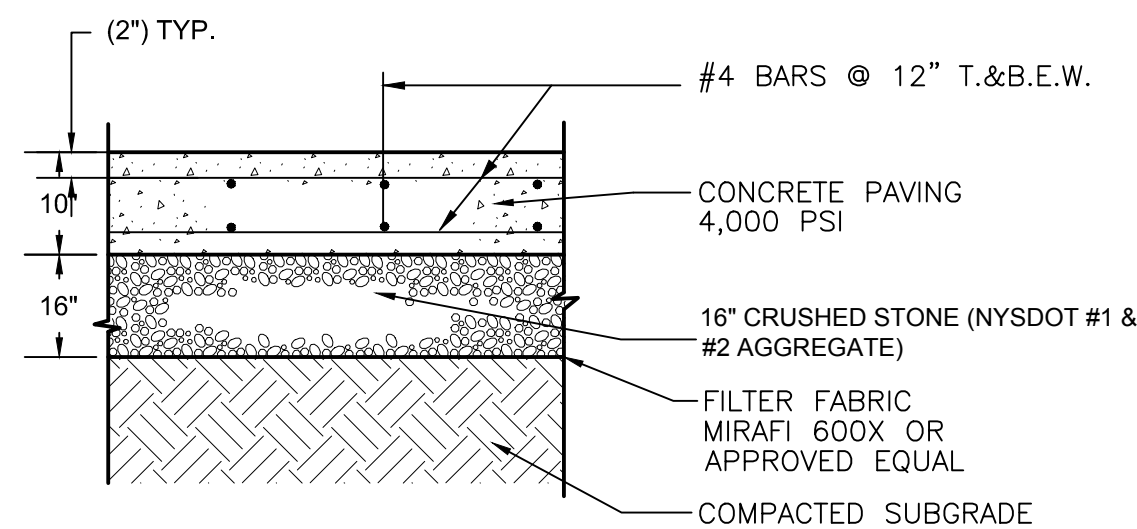
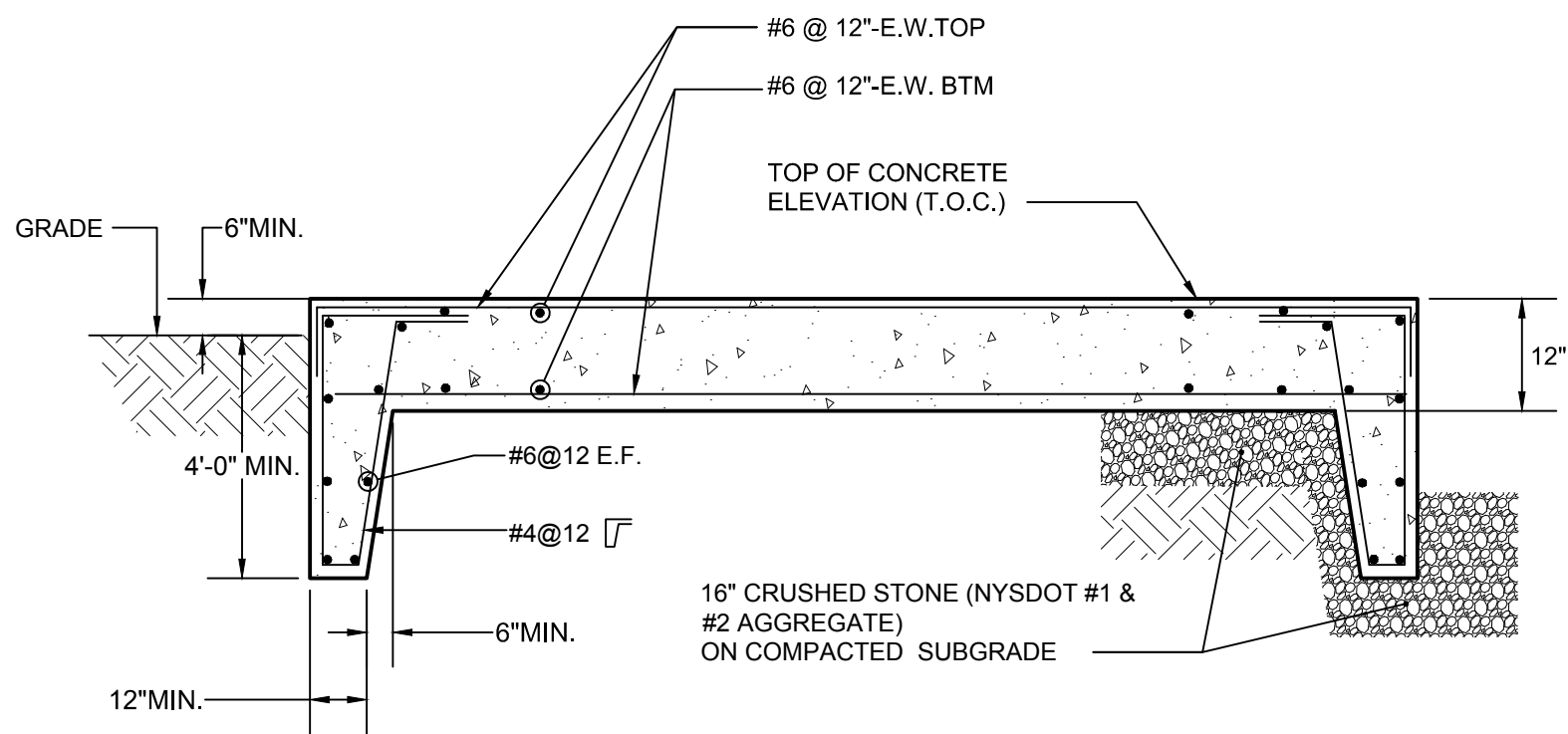


WHEELCHAIR RAMPS SHALL BE CONSTRUCTED IN CONFORMANCE WITH THE CURRENT REGULATIONS OF THE ARCHITECTURAL ACCESS BOARD, THE AMERICANS WITH DISABILITIES ACT.

2 CONCRETE CURB DETAIL
17-G-1501-D-10 SCALE: N.T.S.

3 SECTION THROUGH RETAINING WALL
17-G-1501-D-10 SCALE: N.T.S.

5 HADICAPED APRON DETAIL
17-G-1501-D-10 SCALE: N.T.S.



6 CONCRETE PAD
17-G-1501-D-10 SCALE: N.T.S.

7 CONCRETE APRON PAVEMENT
17-G-1501-D-10 SCALE: N.T.S.

8 CONCRETE WALKWAY
17-G-1501-D-10 SCALE: N.T.S.

9 EXPANSION JOINT
17-G-1501-D-10 SCALE: N.T.S.

10 CONTROL JOINT
17-G-1501-D-10 SCALE: N.T.S.

Planning Board-Town of East Greenbush
BY DIRECTION OF
CHAIRMAN OF THE PLANNING
BOARD THESE PLANS ARE APPROVED
SEE FIRST SHEET FOR DATE & SIGNATURE

Rev #	Date:	Description	Drawn By:	Rev #	Date:	Description	Drawn By:
A	08 Oct 2018	Issued for Permit	JR				
B	25 Oct 2018	ISSUED FOR PERMIT					

CONFIDENTIAL

THIS DRAWING IS THE PROPERTY OF
REGENERON PHARMACEUTICALS, INC. THE
INFORMATION CONTAINED HEREIN MAY NOT
BE USED OR COPIED IN ANY MANNER
WITHOUT THE PRIOR WRITTEN PERMISSION
FROM REGENERON PHARMACEUTICALS, INC.

REGENERON

Regeneron Pharmaceuticals, Inc.
81 Columbia Turnpike
Rensselaer, NY 12144

Scale: AS NOTED

Bldg.:

SITE DETAILS

File No.: 17-G-1305-D-10.DWG

Date: 25/10/2018

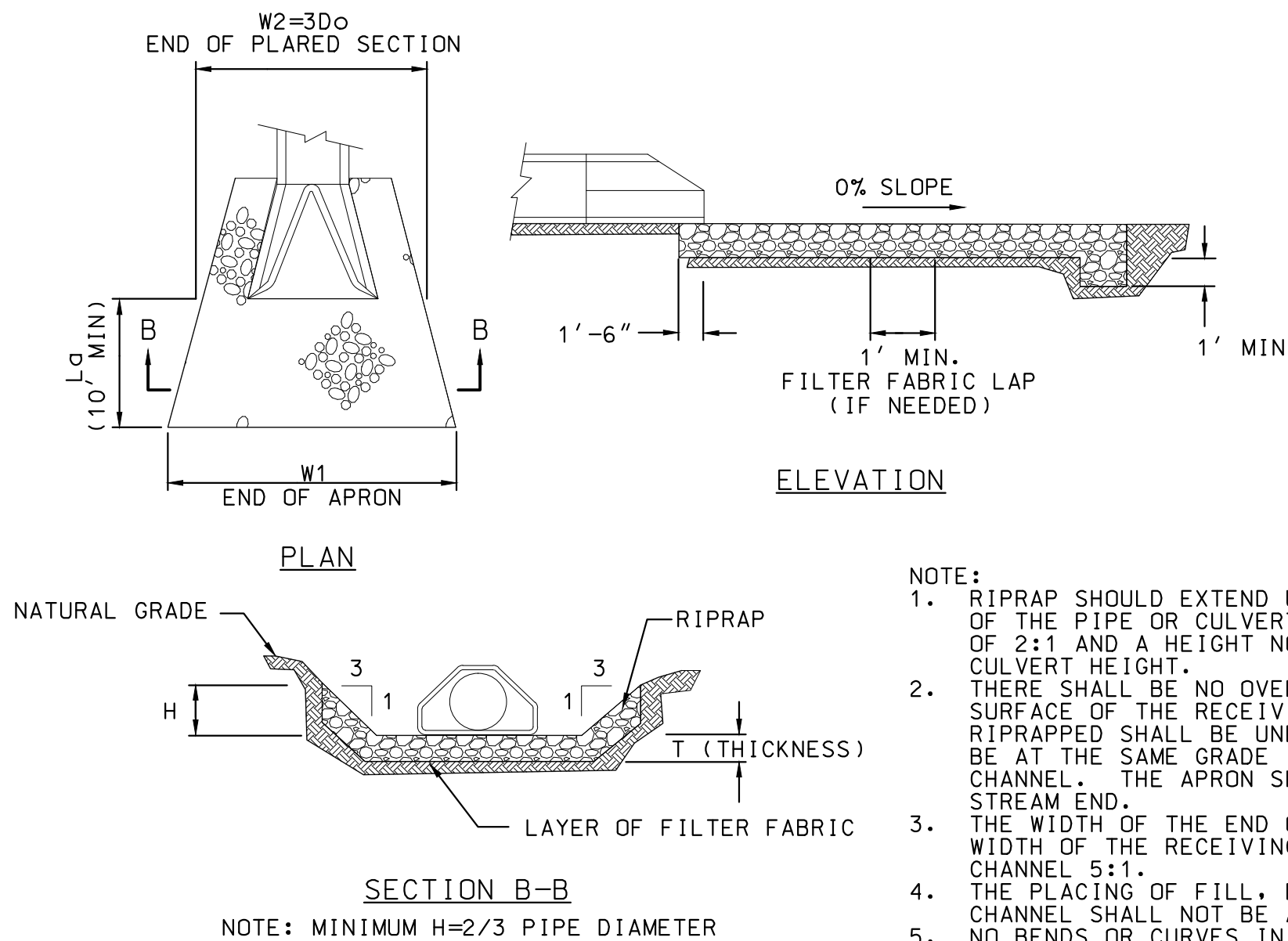
Drawing No.

17-G-1305-D-10

Old Drawing No.

Revision: B

Sheet:



OUTLET	Do (in)	La (ft)	W1=L+αDo (ft)	W2=3Do (ft)	*D50 (in)	*T (in)	MINIMUM H (in)
1	15	10	12	3.75	6	18	16
2A	15	12	14	3.75	6	18	16
2B	12	12	14	3	6	18	16
2C	12	10	12	3	6	18	16
3	12	10	12	3	6	18	16
4	15	10	12	3.75	6	18	16
5A	18	10	12	4.5	6	18	16
5B	12	10	12	3	6	18	16
6	24	14	16	6	6	18	16
7	15	10	12	3.75	6	18	16
8	24	14	16	6	6	18	16

Diagram illustrating the cross-section of a gabion structure. The structure is composed of two layers of gabions, each 3' high, totaling 6' in height. The top layer is labeled "COMMON FILL" and the bottom layer is labeled "COARSE AGGREGATE BACKFILL". The structure is 18" wide at the top and bottom. The top of the structure is labeled "TOP OF BERM ELEV. 221.00" and the bottom is labeled "BOTTOM OF BASIN". A dashed line indicates a "30' MIN" horizontal distance from the structure to the right. A "GEOTEXTILE" layer is shown at the base of the structure.

Planning Board—Town of East Greenbush
BY DIRECTION OF
CHAIRMAN OF THE PLANNING
BOARD THESE PLANS ARE APPROVED
SEE FIRST SHEET FOR DATE & SIGNATURE

CONFIDENTIAL

THIS DRAWING IS THE PROPERTY OF
REGENERON PHARMACEUTICALS, INC. THE
INFORMATION CONTAINED HEREIN MAY NOT
BE USED OR COPIED IN ANY MANNER
WITHOUT THE PRIOR WRITTEN PERMISSION
FROM REGENERON PHARMACEUTICALS, INC.

Regeneron Pharmaceuticals, Inc.
81 Columbia Turnpike
Rensselaer, NY 12144

Scale: AS NOTED

Bldg.:

File No.: **17-G-1305-D-11.DWG**

Date: 28/8/2018

Revision: **A**

Sheet: