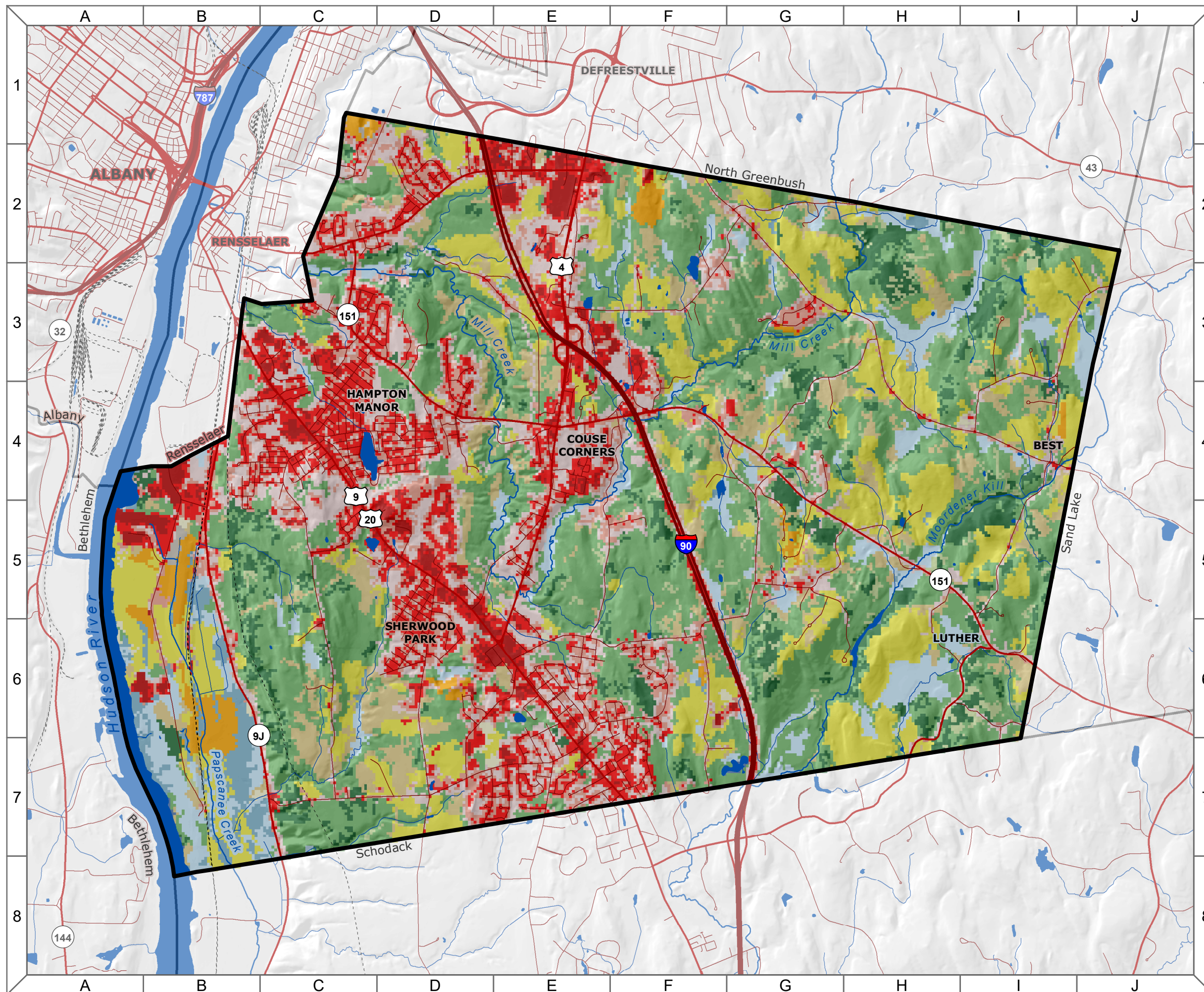


Town of East Greenbush Natural Resources Inventory

14. General Land Cover and Land Use



Map Legend

Land Cover

- Developed - High Intensity
- Developed - Medium Intensity
- Developed - Low Intensity
- Developed - Open Space
- Emergent Herbaceous Wetlands
- Woody Wetlands
- Open Water
- Cultivated Crops
- Hay/Pasture
- Barren Land
- Shrub/Scrub
- Herbaceous
- Deciduous Forest
- Mixed Forest
- Evergreen Forest

Roads

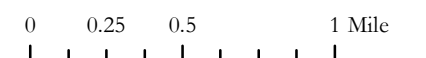
- Interstate
- State/US Highway
- Local Street
- Railroad

Hydrology

- Open Water
- River/Stream

- Municipality

Scale: 1:40,000



Data Sources: *Land Cover:* National Land Cover Dataset: U.S. Geological Survey (2011). | *Roadways:* ESRI North American Detailed Streets (2010). | *Railroads:* NYS DOT (May 2013). | *Towns:* NYS GIS Program Office (January 2017). | *Elevation:* NYS DEC and U.S. Geological Survey (date unknown). | *Rivers/Streams:* National Hydrography Dataset: NYS DEC and US Geological Survey (March 2017). **Note:** This map is intended for general planning and education purposes and is not a substitute for site-level surveys. It relies upon public data sources that may contain errors or omissions. Town of East Greenbush Natural Resources Inventory maps were completed with technical assistance from Cornell University, with funding from the NYS Environmental Protection Fund through the NYS DEC Hudson River Estuary Program. <http://hudson.dnr.cals.cornell.edu>



Cornell University



Department of
Environmental
Conservation

Hudson River
Estuary Program