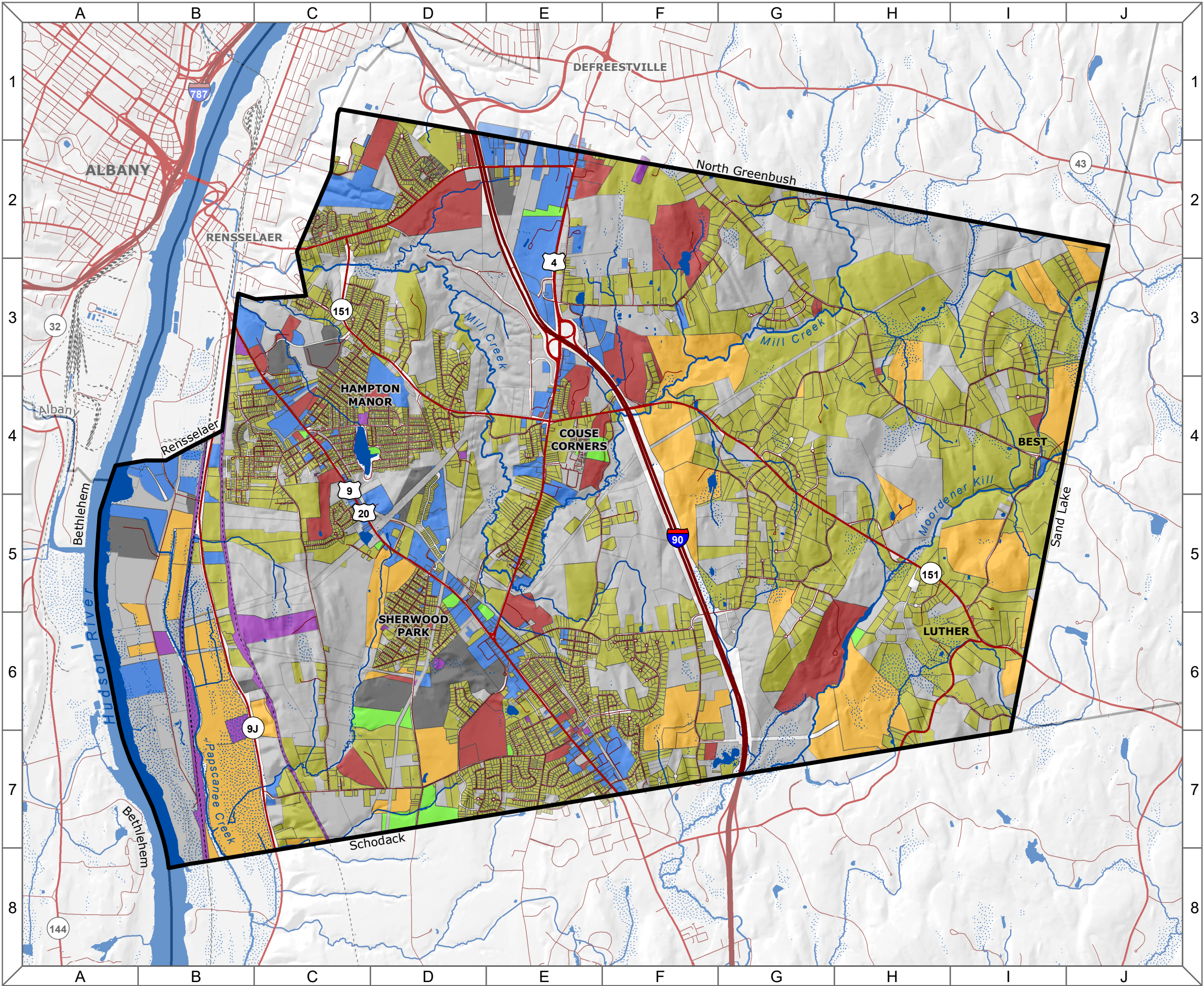


Town of East Greenbush
Natural Resources Inventory
21. Existing Land Use

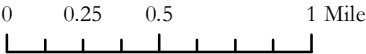


Map Legend

Parcel Use Class	Assessor Code Range
Agricultural	100 - 199
Residential	200 - 299
Vacant Land	300 - 399
Commercial	400 - 499
Entertainment & Rec.	500 - 599
Community Services	600 - 699
Industrial	700 - 799
Public Services	800 - 899

Hydrology	Roads
Open Water	Interstate
Wetland	State/US Highway
River/Stream	Local Street
Municipality	Railroad

Scale: 1:40,000



Data Sources: *Tax Parcel Use:* Rensselaer County Tax Services Department (March 2018). | *Roadways:* ESRI North American Detailed Streets (2010). | *Railroads:* NYS DOT (May 2013). | *Towns:* NYS GIS Program Office (January 2017). | *Elevation:* NYS DEC and U.S. Geological Survey (date unknown). | *Rivers/Streams:* National Hydrography Dataset: NYS DEC and US Geological Survey (March 2017). | *Wetlands:* US Fish and Wildlife Service (2012) and NYS DEC (2013). **Note:** This map is intended for general planning and education purposes and is not a substitute for site-level surveys. It relies upon public data sources that may contain errors or omissions. Town of East Greenbush Natural Resources Inventory maps were completed with technical assistance from Cornell University, with funding from the NYS Environmental Protection Fund through the NYS DEC Hudson River Estuary Program. <http://hudson.dnr.cals.cornell.edu>
Map by Andrew Varuzzo, 2018.



Cornell University



Department of
Environmental
Conservation

Hudson River
Estuary Program