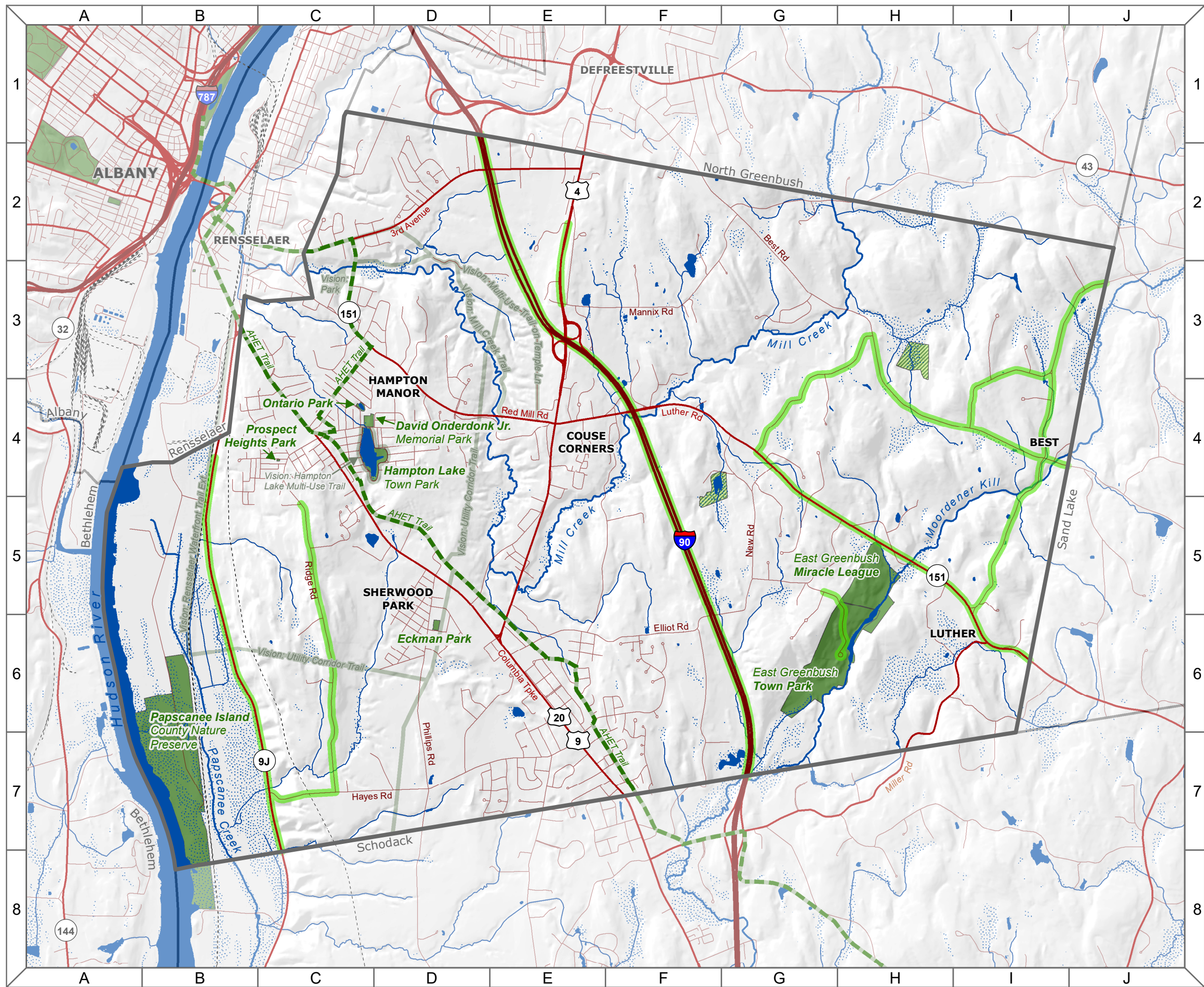


Town of East Greenbush

Natural Resources Inventory

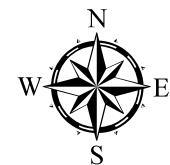
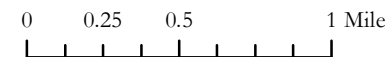
24. Conservation, Recreation & Scenic Areas



Map Legend

- Parks and Protected Lands**
 - Park or Preserve (Public Access)
 - Conservation Easement (No Public Access)
- Proposed Amenities**
 - Albany-Hudson Electric Trail (AHET) Route
 - Park (2017 Amenities Vision Plan)
 - Multi-Use Trail (2017 Amenities Vision Plan)
- Scenic Resources**
 - Scenic Roadway
- Roads**
 - Interstate
 - State/US Highway
 - Local Street
 - Railroad
- Hydrology**
 - Open Water
 - Wetland
 - River/Stream
 - Municipality

Scale: 1:40,000



Data Sources: *Parks and Protected Lands:* New York Protected Areas Database (2018) and Rensselaer County Tax Services Department (2018). | *AHET Route:* Alta Planning and Design (2018). | *Envisioned Parks and Multi-Use Trails:* Town of East Greenbush Amenities Plan (2017). | *Scenic Roadways:* Town of East Greenbush Comprehensive Plan (1993). | *Roadways:* ESRI North American Detailed Streets (2010). | *Railroads:* NYS DOT (May 2013). | *Towns:* NYS GIS Program Office (January 2017). | *Elevation:* NYS DEC and U.S. Geological Survey (date unknown). | *Rivers/Streams:* National Hydrography Dataset: NYS DEC and US Geological Survey (March 2017). | *Wetlands:* US Fish and Wildlife Service (2012) and NYS DEC (2013). **Note:** This map is intended for general planning and education purposes and is not a substitute for site-level surveys. It relies upon public data sources that may contain errors or omissions. Town of East Greenbush Natural Resources Inventory maps were completed with technical assistance from Cornell University, with funding from the NYS Environmental Protection Fund through the NYS DEC Hudson River Estuary Program. <http://hudson.dnr.cals.cornell.edu> Map by Andrew Varuzzo, 2018.