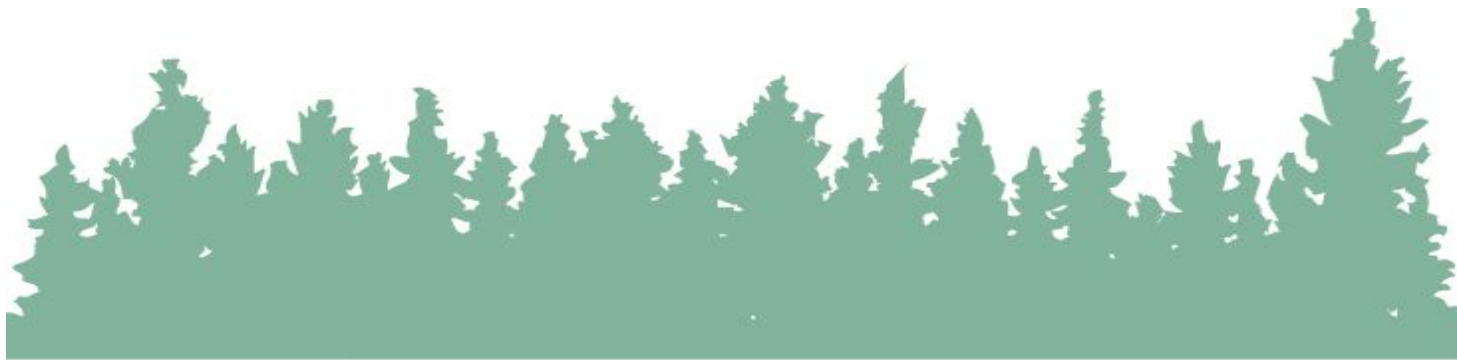
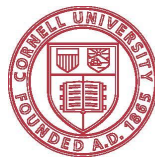


# Town of East Greenbush Natural Resources Inventory



Department of  
Environmental  
Conservation

Hudson River  
Estuary Program

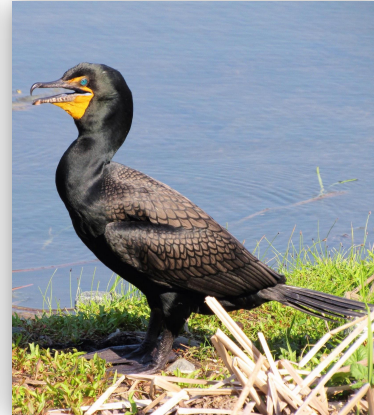


Cornell University

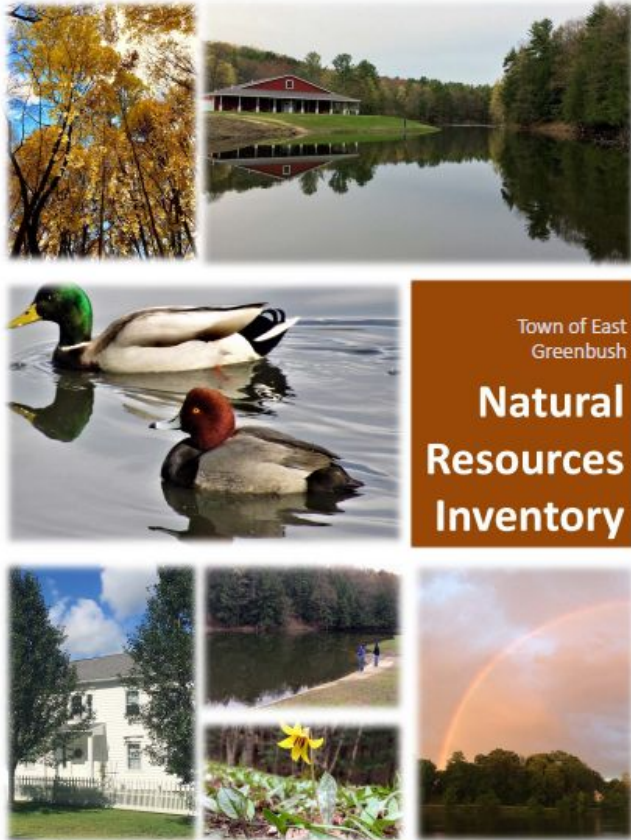


# What is an NRI?

- Geology & soils
- Water Resources
- Habitats
- Land Use
- Climate Conditions
- Cultural Resources



# Why inventory natural resources?



- Foundation for comprehensive planning & zoning
- Valuable tool for land use planning
- Educate landowners and developers
- Keep track of “big picture”

# East Greenbush NRI

## NRWG Volunteers:

Victoria Manieri (Chair)

Jennifer Dean

Jennifer Hixon

Nancy Kupiec (Planning Board)

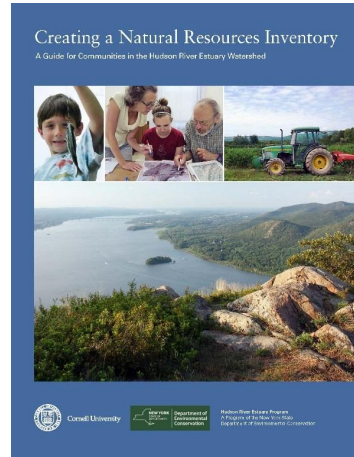
Andrew Poitras

Bob Wood

Adam Yagelski (Town Planner)

Guy Warner (Town Board)

Tina Tierney (Town Board)



## With support from:

Ingrid Haeckel

(DEC Hudson River Estuary Program)

Andrew Varuzzo

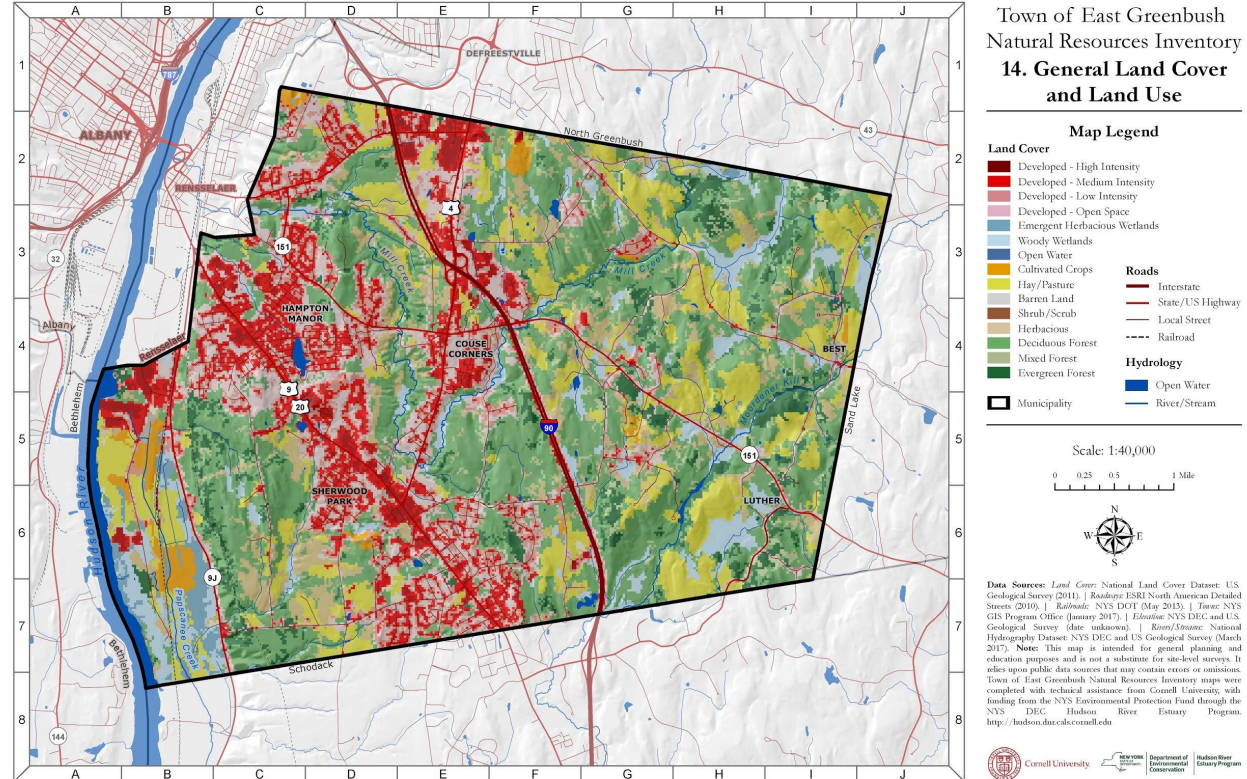
(Cornell GIS Intern)

Nick Conrad and David Hunt  
(Rensselaer Land Trust)



# Land Use

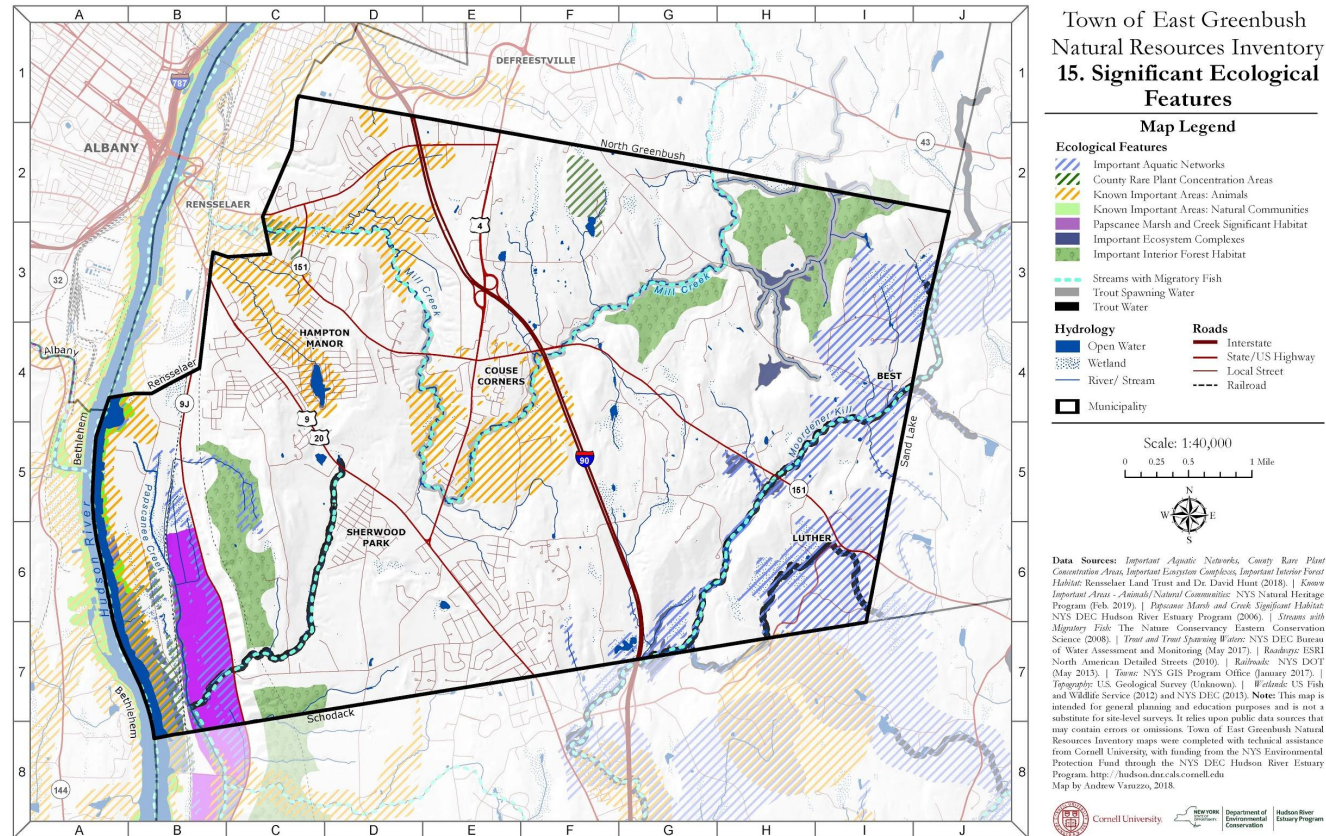
A 10% increase in  
impervious cover can  
double runoff and  
increase flood risk by  
28%  
*(United States EPA)*



## Habitats & Significant Ecological Features

Habitats:

- Coastal/ Hudson River Estuary  
(tidal wetlands and shoreline, and underwater areas)
- Streams
- Riparian and floodplain areas
- Wetlands
- Large forests
- Grassland, shrubland, and young forests

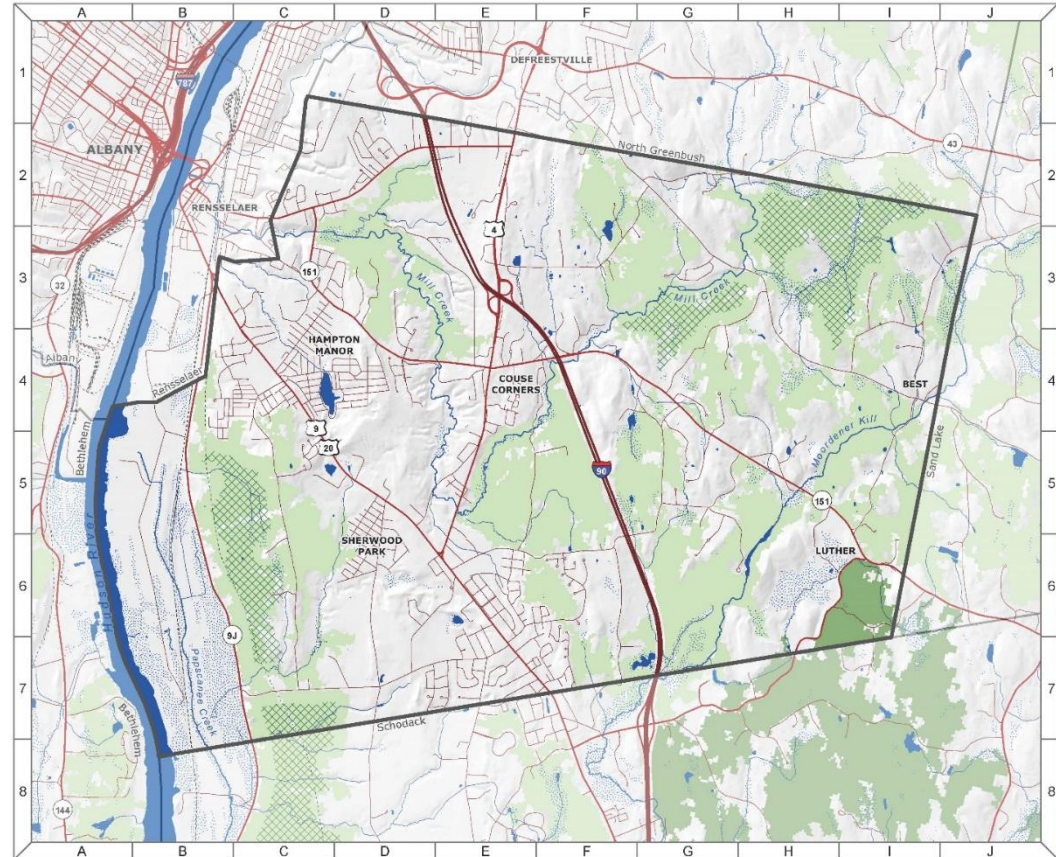




# Large Forests

## Forest blocks provide many benefits

- Habitat for forest-interior species
- Serve as corridors for wildlife movement and plant dispersal
- Help protect water quality
- Reduced exposure to invasive species
- Increased quality of life





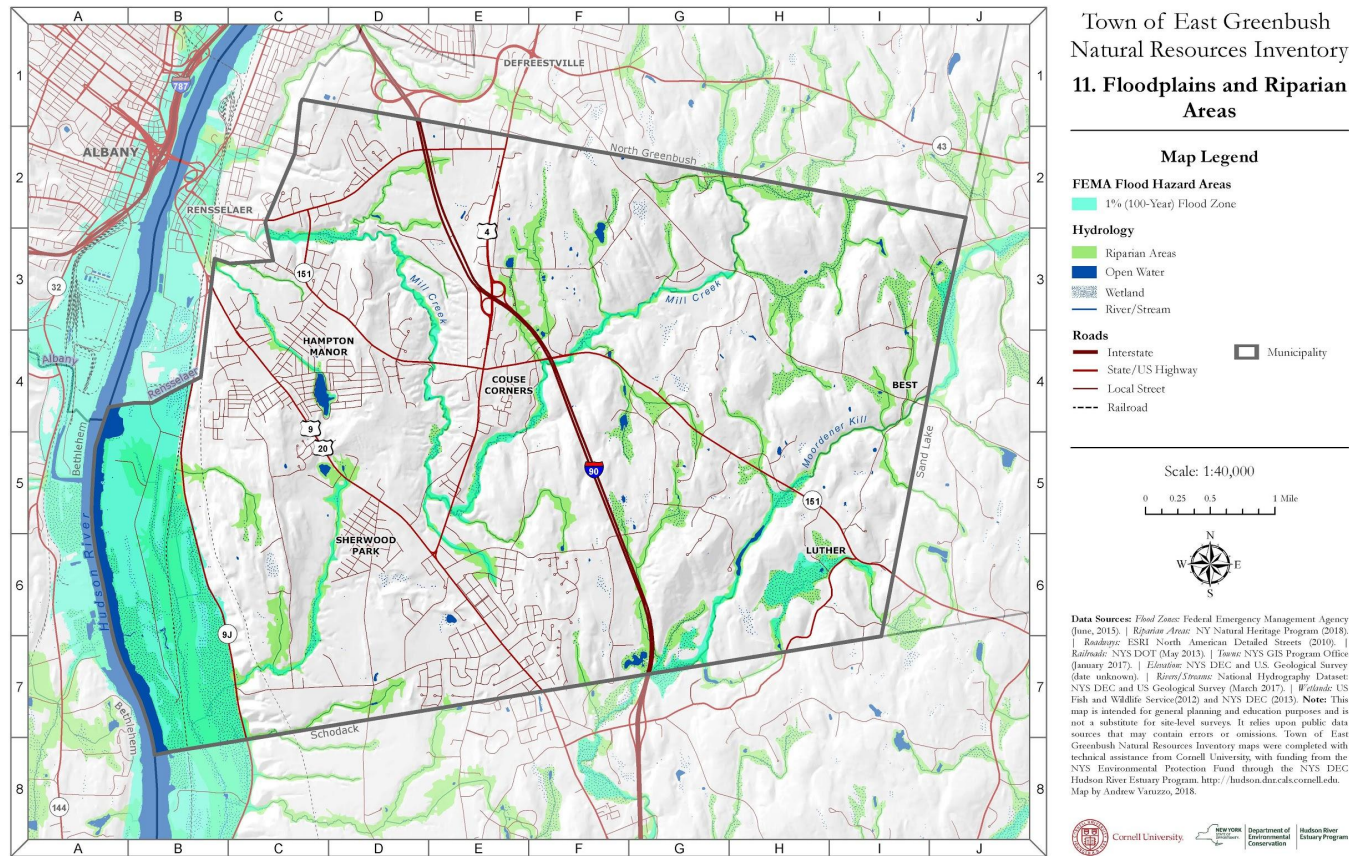


*Photos by East Greenbush resident Jodie Krulikowski*

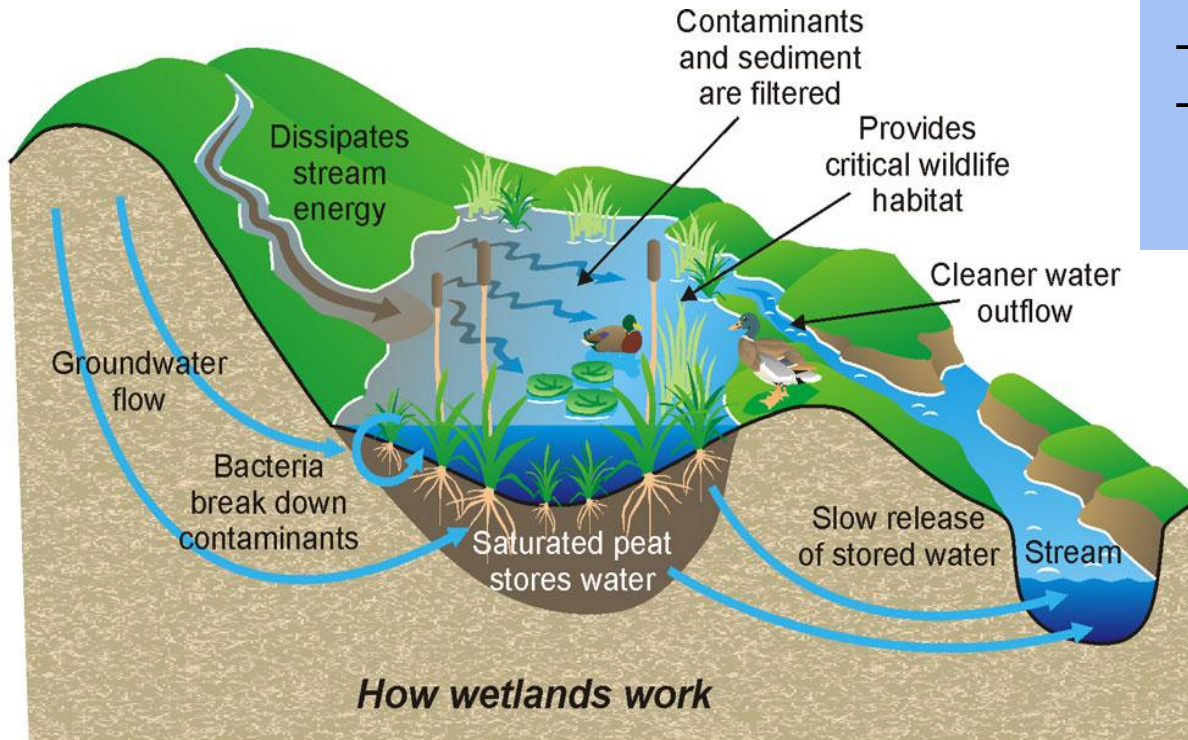


# Floodplains and Riparian Areas

- Provides critical habitat
- Control flooding
- Reduce damage from storm surge
- Recharge groundwater
- Filter & purify surface water
- Provide recreational opportunities



# Wetlands



Wetlands can remove or trap:

- 20 to 60% of metals
- 80 to 90% of sediment
- 70 to 90% of entering nitrogen

*(Ecological Society of America)*

A single acre of wetland  
can store 1-1.5 million  
gallons of floodwater

*(United States EPA)*



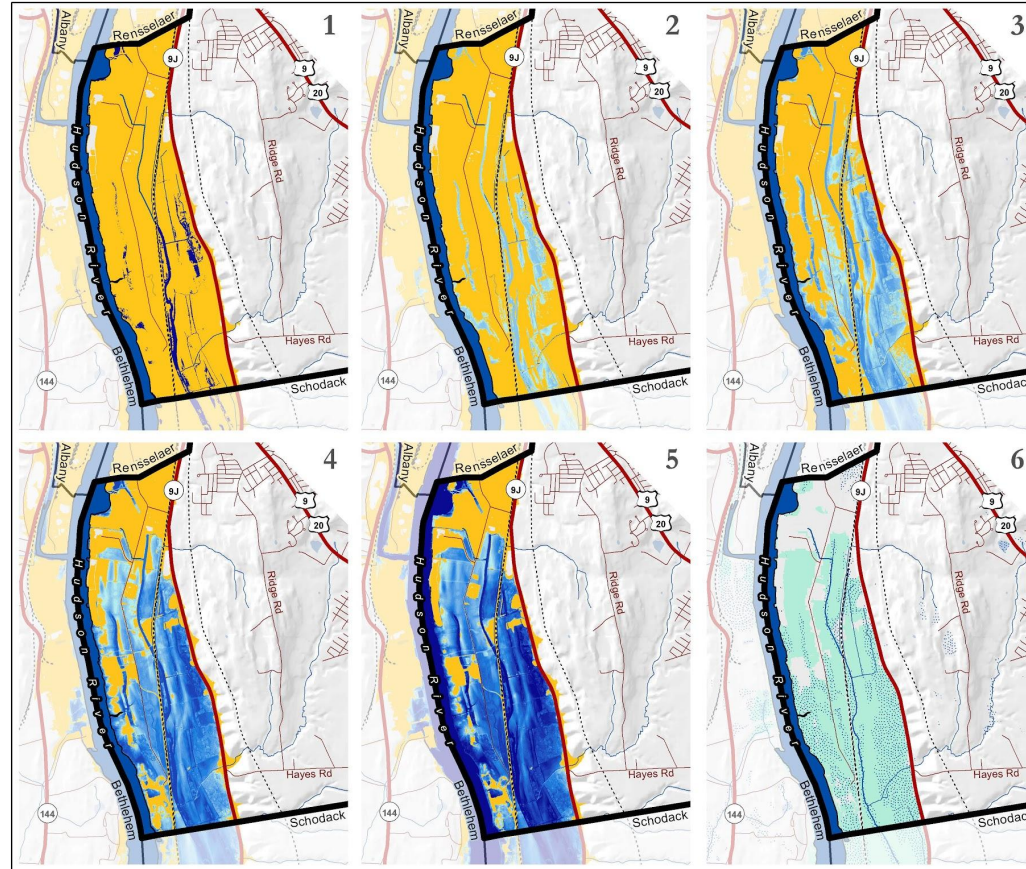
Department of  
Environmental  
Conservation

Hudson River  
Estuary Program



# Climate Trends

- Increasing temperatures
- Changing precipitation patterns
- rising sea levels



## Town of East Greenbush Natural Resources Inventory 19A. Sea Level Rise

### Map Legend

Inundation Depth (in)	Roads
≤72	State/US Highway
66	Local Street
60	Railroad
54	
48	
42	
36	
30	
24	
18	
12	
6	
>0	

Scale: 1:40,000

0 0.25 0.5 1 Mile



- 0.6m of sea level rise: current water level and 100-year flood zone.
- 1.2m of sea level rise: expected inundation and 100-year flood zone.
- 3.0m of sea level rise: expected inundation and 100-year flood zone.
- 4.5m of sea level rise: expected inundation and 100-year flood zone.
- 7.2m of sea level rise: expected inundation and 100-year flood zone.
- Tidal wetland pathways. These are areas where tidal wetlands are likely to move by 2100 as sea level rises.

**Data Sources:** *Expected Inundation and Flood Zone*: Scenic Hudson Sea Level Rise Mapper (2013). | *Tidal Wetland Pathways*: Scenic Hudson - Sea Level Affecting Marshes Model (SLAMM) (2015). | *Roadways*: ESRI North American Detailed Streets (2010). | *Railroads*: NYS DOT (May 2013). | *Towns*: NYS GIS Program Office (January 2017). | *Elevation*: NYS DEC and U.S. Geological Survey (date unknown). | *Rivers/Streams*: National Hydrography Dataset: NYS DEC and U.S. Geological Survey (March 2017). | *Wetlands*: US Fish and Wildlife Service (2012) and NYS DEC (2013). **Note:** This map is intended for general planning and education purposes and is not a substitute for site-level surveys. It relies upon public data sources that may contain errors or omissions. Town of East Greenbush Natural Resources Inventory maps were completed with technical assistance from Cornell University, with funding from the NYS Environmental Protection Fund through the NYS DEC Hudson River Estuary Program. <http://hudson.dec.state.ny.us>  
Maps by: Andrew Vanzotto, 2018.



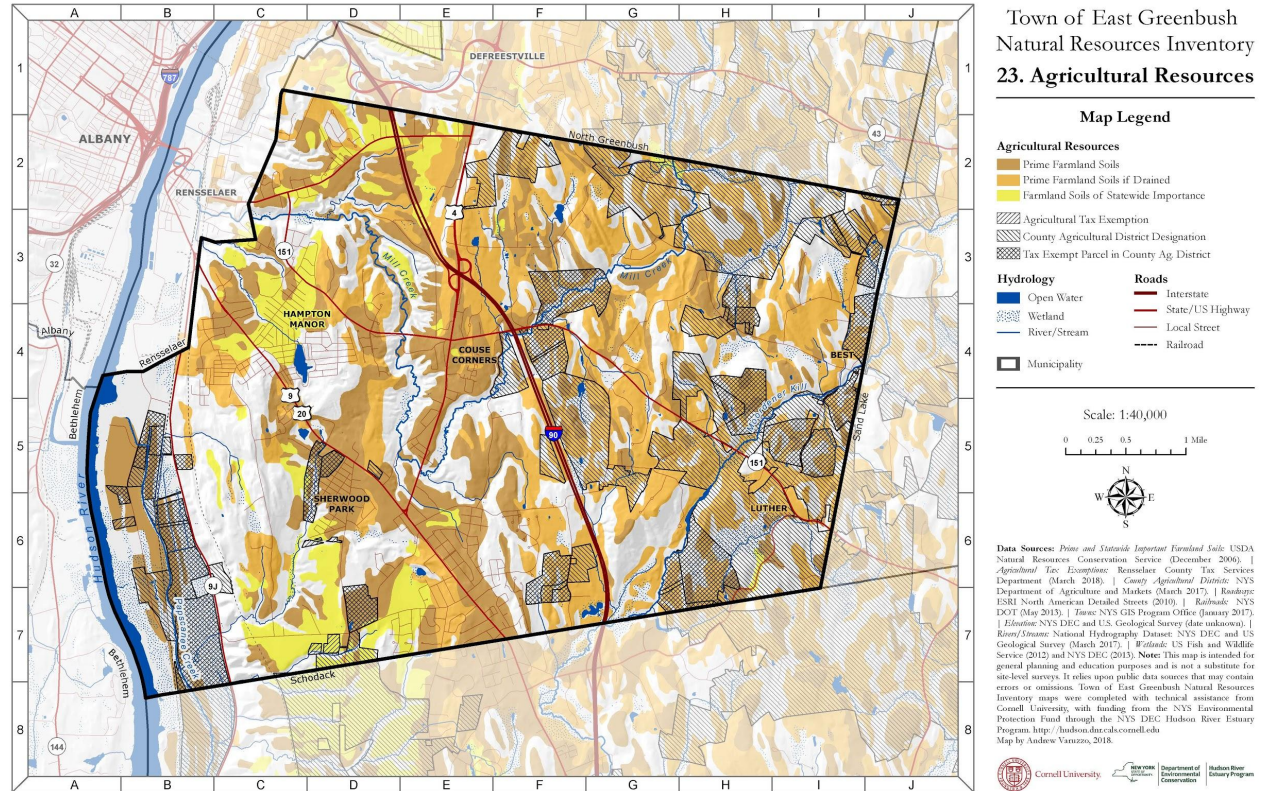
Cornell University



Department of Environmental Conservation  
Hudson River Estuary Program

# Agricultural Resources

- Prime Farmland Soils are defined by USDA & NYS
- Agricultural district incentives
- Large areas of farmland promote long term viability of agriculture
- Benefits:
  - Economy
  - Health
  - Flood control
  - Habitat
  - Scenic beauty

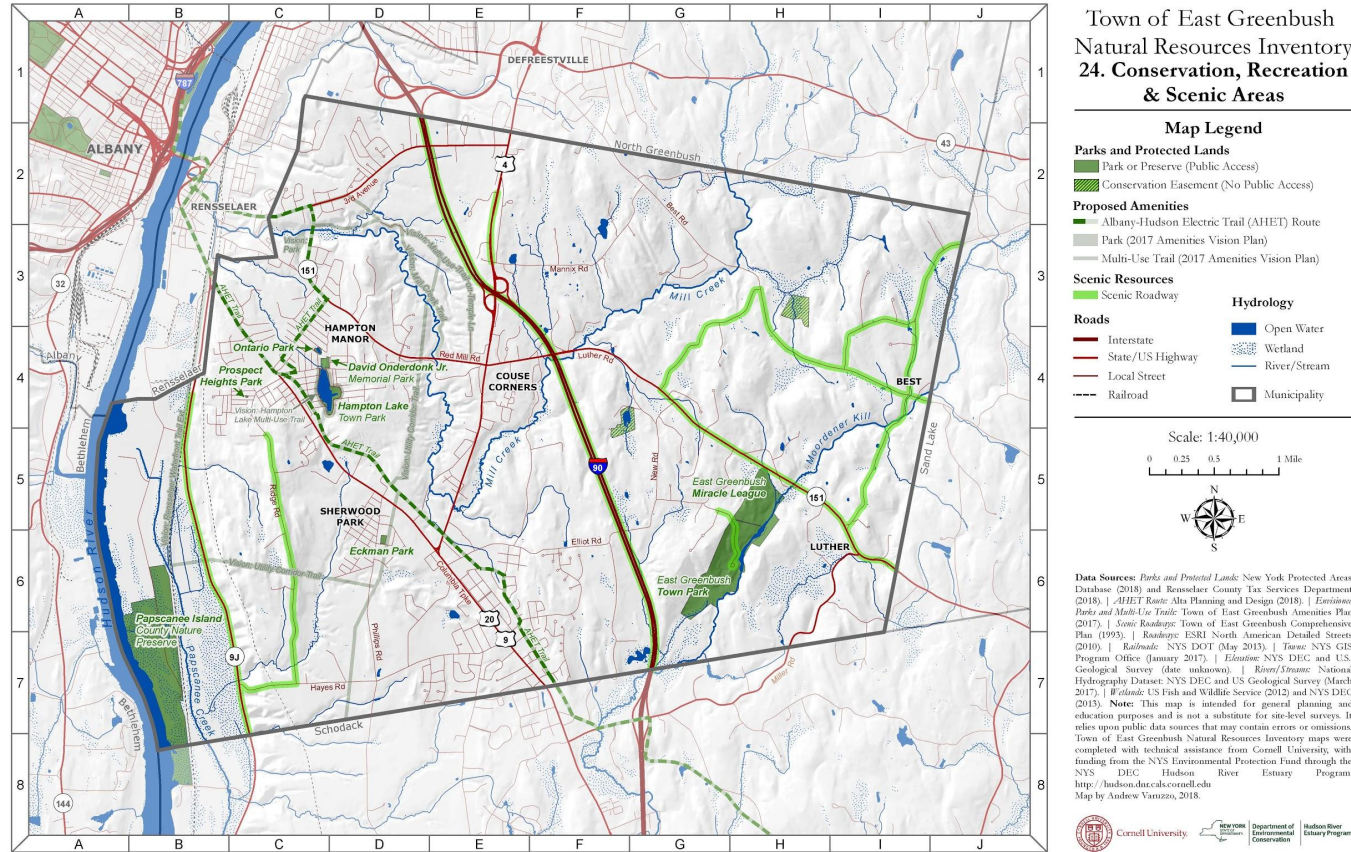




# Outdoor Recreation & Scenic Areas

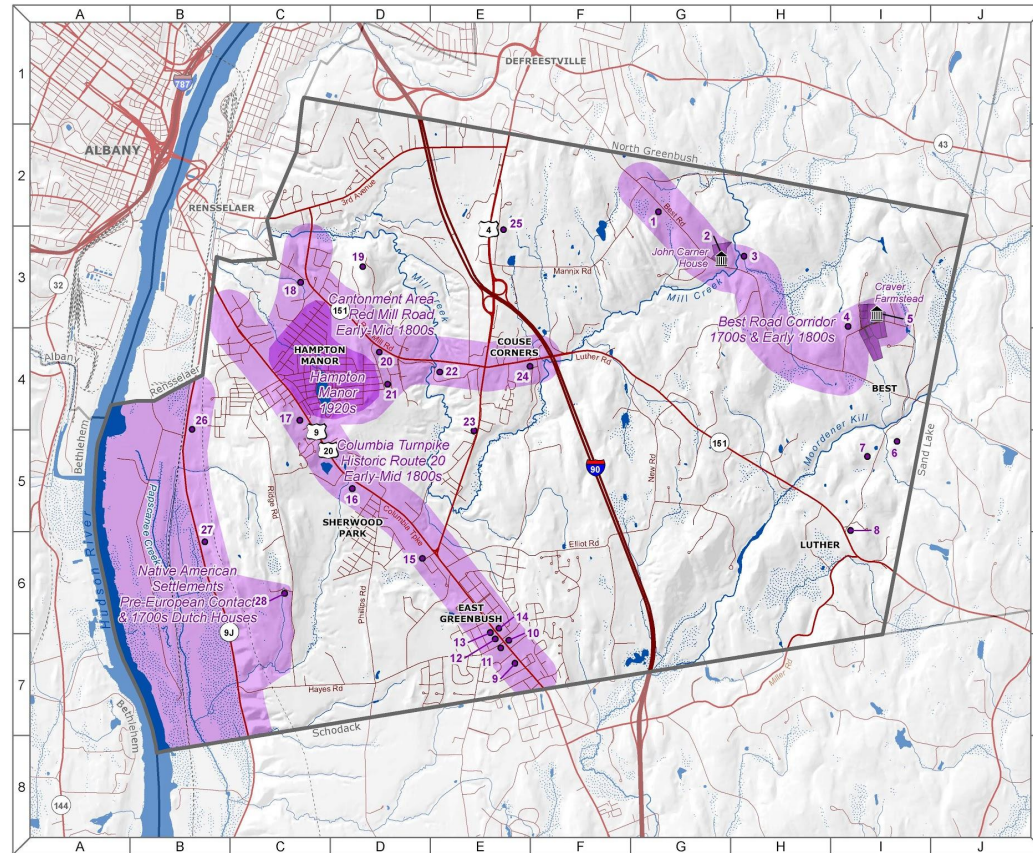


- Grow bicycle & pedestrian connections
- Develop funding strategy for amenities plan
- Highlight & promote Papscaenee Island and other recreation areas



# Cultural Preservation

- Encourage re-use of remaining historic buildings
- Create community restoration program
- Encourage adaptive re-use with overlay district or special approval process
- Create database of resources



## Town of East Greenbush Natural Resources Inventory 25. Historic Preservation Assets

### Map Legend

#### Historic Sites

- National Register Historic Site Parcel
- National Register Historic Structure
- Locally Recognized Historic Site
- Sensitive Historic Area

#### Roads

- Interstate
- State/US Highway
- Local Street
- Railroad

#### Hydrology

- Open Water
- Wetland
- River/Stream
- Municipality

Scale: 1:40,000

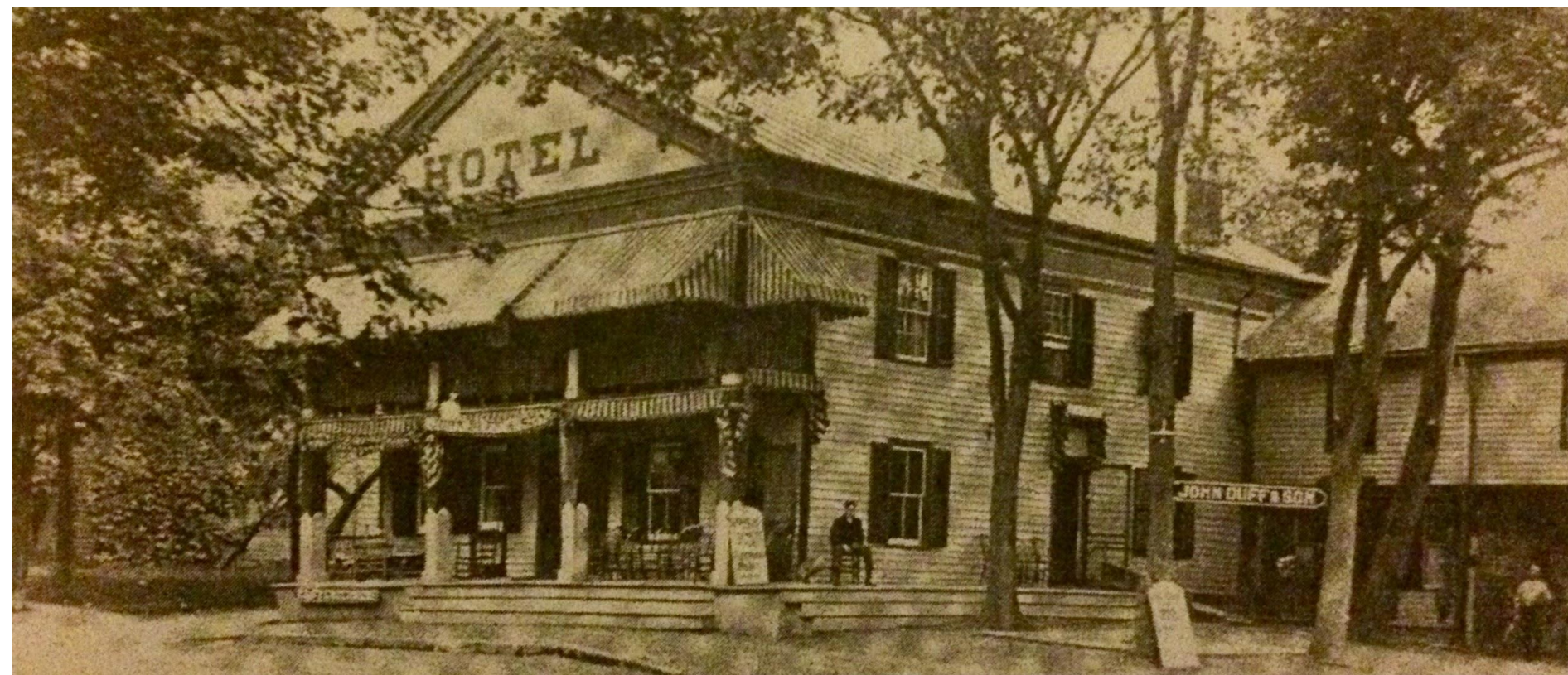
0 0.25 0.5 1 Mile



**Data Sources:** National Register Historic Site: National Register of Historic Places data courtesy of NYS Office of Parks, Recreation and Historic Preservation (February 2017). | Locally Recognized Historic Site: Georeferenced from Town of East Greenbush 1993 Comprehensive Development Plan Update and verified/updated by NRWG (2018). | Sensitive Historic Areas: NRWG (2018). | Roads: ESRI North American Detailed Streets (2010). | Railroads: NYS DGT (May 2013). | Towns: NYS GIS Program Office (January 2017). | Elevation: NYS DEC and U.S. Geological Survey (date unknown). | River/Stream: National Hydrography Dataset: NYS DEC and U.S. Geological Survey (March 2017). | Wetlands: U.S. Fish and Wildlife Service (2012) and NYS DEC (2013). **Note:** This map is intended for general planning and education purposes and is not a substitute for site-level surveys. It relies upon public data sources that may contain errors or omissions. Towns of East Greenbush Natural Resources Inventory maps were completed with technical assistance from Cornell University, with funding from the NYS Environmental Protection Fund through the NYS DEC Hudson River Estuary Program. <http://hudsonriverestuary.cornell.edu>. Map by Andrew Vanazzo, 2018.



# Defreest Hotel 1802





# Defreest Hotel Today





# School House #6

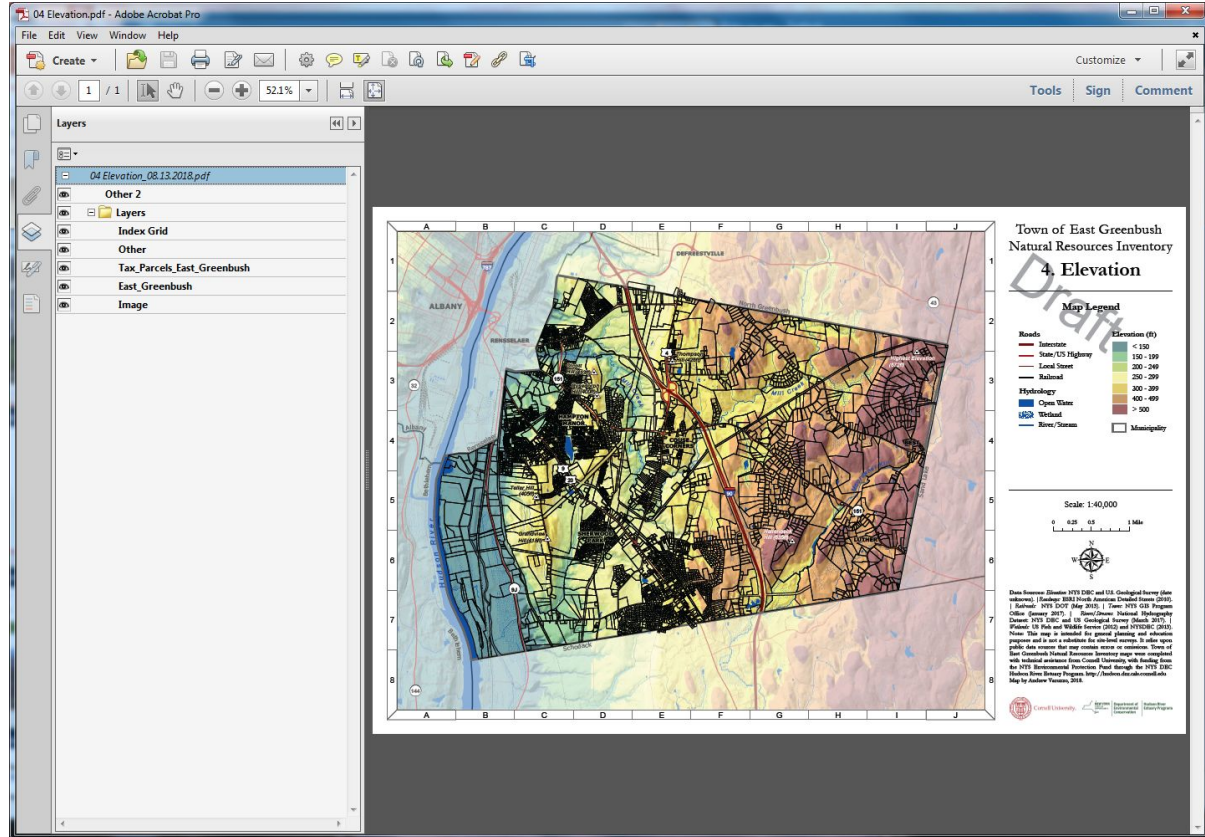


# Recommendations

- Revitalize a Conservation Advisory Council (CAC) to promote community involvement in natural resource protection
- Develop a strategic approach to natural resources
- Encourage smart growth & development
- Position East Greenbush to be prepared and resilient in a changing climate
- Improve outdoor recreation opportunities and access to natural and scenic areas
- Preserve and enhance important historic resources

# Viewing Tax Parcels

- Open PDF in Adobe Acrobat
- Expand layers
- Click “+” to expand all layer groupings
- Click on parcels



**Maps and full NRI report available online:**

<https://www.eastgreenbush.org/departments/planning-zoning/natural-resources-inventory>

**Recommendations Memo:**

[https://www.eastgreenbush.org/application//5515/5907/0070/NRI\\_Planningmeetingpacket-FINAL.pdf](https://www.eastgreenbush.org/application//5515/5907/0070/NRI_Planningmeetingpacket-FINAL.pdf)

**Questions & comments:**E-mail: [nri@eastgreenbush.org](mailto:nri@eastgreenbush.org)

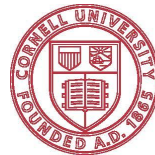
**Hudson River Estuary Program:**

<http://hudson.dnr.cals.cornell.edu/>



**Department of  
Environmental  
Conservation**

**Hudson River  
Estuary Program**



**Cornell University**

