

1.	ALL PLANT BEDS TO BE MULCHED WITH 4" DEEP BROWN HARDWOOD MULCH, UNLESS OTHERWISE NOTED ON THE PLANS.	6.	LOCATION OF ALL PLANTINGS FOR APPROVAL BY LANDSCAPE ARCHITECT.
2.	PRIOR TO PLANTING, CONTRACTOR SHALL LOCATE, VERIFY, AND REPORT ANY CONFLICTS OF EXISTING UTILITY LINES TO THE LANDSCAPE ARCHITECT.	7.	SCHEDULE DELIVERY OF PLANTS ONLY IN REASONABLE TIME AS TO WHEN THEY CAN BE INSTALLED. PLANTS TO BE INSPECTED BY LANDSCAPE ARCHITECT AT DELIVERY.
3.	ALL NEW PLANT MATERIAL SHALL CONFORM TO THE MINIMAL GUIDELINES ESTABLISHED BY THE AMERICAN STANDARD FOR NURSERY STOCK PUBLISHED BY THE AMERICAN ASSOCIATION OF NURSERYMEN, INC. AND SHALL BE OF SPECIMEN QUALITY UNLESS APPROVED OTHERWISE BY DIRECTOR'S REPRESENTATIVE.	8.	MAINTENANCE TO BEGIN IMMEDIATELY FOLLOWING INSTALLATION OF PLANT MATERIALS AND LAWN UNTIL FINAL ACCEPTANCE.
4.	WRITTEN APPROVAL IS REQUIRED FROM LANDSCAPE ARCHITECT OF ANY PROPOSED SUBSTITUTIONS OF PLANT MATERIAL. CHANGED PLANTS SHALL BE EQUIVALENT FORM, HEIGHT, FLOWER, COLOR, LEAF, SIZE, BRANCHING, CULTURE AND FRUIT.	9.	TREES SHALL NOT BE PLANTED BEFORE ACCEPTANCE OF ROUGH GRADING. TREES SHALL BE PLANTED 3" HIGHER THAN PREVIOUS GRADE. SHRUBS AND GROUND COVER SHALL BE PLANTED AS THE SAME RELATIONSHIP TO GRADE AS PREVIOUS GRADE.
5.	A MINIMUM OF 6" OF SUITABLE TOPSOIL IS REQUIRED IN AREAS WITH PROPOSED LAWN SEEDING PRIOR TO SEEDING.	10.	PLANT MATERIAL QUANTITIES TO BE PROVIDED BY CONTRACTOR AS SHOWN ON DRAWINGS.
		11.	UNLESS NOTED ON PLANT SCHEDULE, PLANTS TO BE BALLED AND BURLAPPED OR CONTAINER GROWN.
		12.	FOR SEEDING OF DISTURBED AREAS USE SPECIFIED MIX FOR DESIGNATED AREA OR APPROVED EQUAL APPROVED BY LANDSCAPE ARCHITECT.

STREET TREE-BUFFER-PARKING LOT PLANTING SCHEDULE					
KEY	QTY	SCIENTIFIC NAME	COMMON NAME	MIN. SIZE	COMMENTS
TREES					
AR	13	ACER RUBRUM 'RED SUNSET'	RED SUNSET MAPLE	2 1/2" CAL.	B & B
AC	5	AMELANCHIER CANADENSIS	SHADBLOW SERVICEBERRY	6-7" HT.	B & B
BN	6	BETULA NIGRA	RIVER BIRCH	10-12" HT.	B & B
CV	16	CRATAEGUS VIRIDIS 'WINTER KING'	WINTER KING HAWTHORN	7-8" HT.	B & B
TC	6	TSUGA CANADENSIS	EASTERN HEMLOCK	6-8" HT.	B & B
CC	20	CARPINUS CAROLINIANA	AMERICAN HORNBEAM	2-2 1/2" CAL.	B & B
M	10	MALUS 'KING ARTHUR'	KING ARTHUR CRABAPPLE	2-2 1/2" CAL.	B & B
ALR	5	ALNUS RUGOSA	SPECKLED ALDER	7-8" HT.	B & B
SHRUBS					
KL	53	KALMIA LATIFOLIA	MOUNTAIN LAUREL	30-36" HT.	B & B
CP	1799	COMPTONIA PERGRINA	SWEET FERN	1 GAL. POT	14" - 18" SPACING

NOTES:

1. TREES SHALL BEAR SAME RELATIONSHIP TO FINISH GRADE AS IN THE NURSERY.
2. THIN BRANCHES & FOLIAGE AS DIRECTED WHILE RETAINING NORMAL SHAPE OF TREE. NEVER CUT A LEADER
3. TREES SHALL BE PLUMB & STRAIGHT.

ATTACH  $\frac{1}{2}$ " GALV. STEEL CABLE TO STAKE.  
 NOTCH STAKE TO RECEIVE CABLE. ENCASE WIRE AROUND TRUNK TO REINFORCE RUBBER HOSE ABOVE FIRST BRANCH. SECURE ALL ENDS OF CABLE WITH GALV. CLAMPS.

4" GALV. TURNBUCKLE EA. CABLE

3"Ø X 8' CEDAR STAKES, 3 PER TREE. STAKES TO BE SAME HEIGHT, DRIVEN IN ON A SLIGHT ANGLE. STAKES TO BE OUTSIDE OF ROOT BALL.

WRAP ALL DECIDUOUS TRUNKS NEATLY TO A HEIGHT OF THE SECOND LOWEST BRANCH ( FALL PLANTING ONLY)

3" HT. PLANTING MIX SAUCER

BROWN HARDWOOD MULCH;  
 PULL MULCH AWAY FROM TREE TRUNK  
 AMENDED PLANTING MIX, COMPACTED

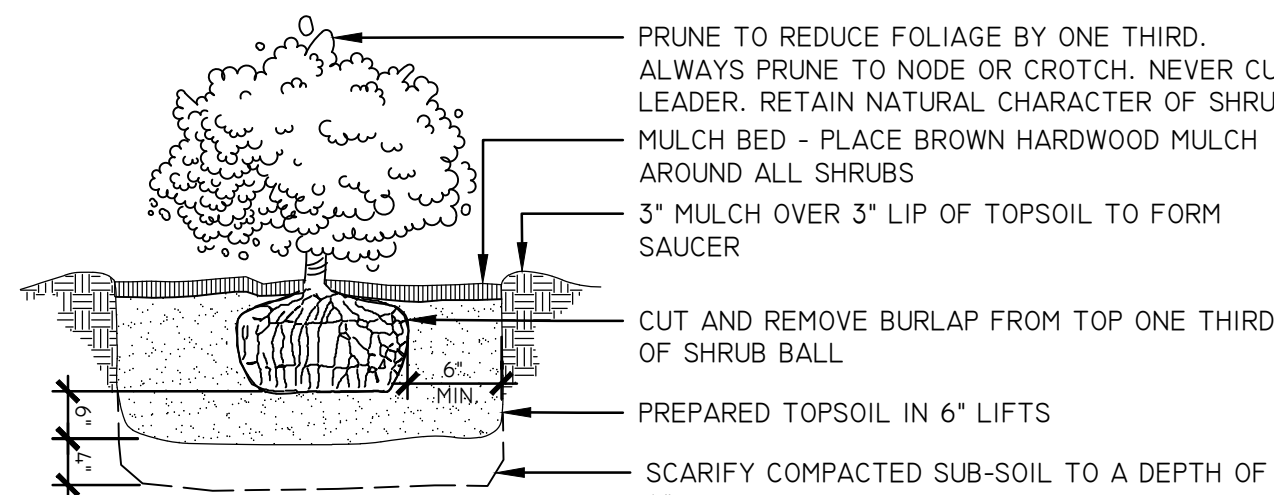
CUT ROPE SURROUNDING BOTTOM OF TREE TRUNK AFTER BACKFILLING BUT BEFORE MULCHING. DO NOT REMOVE BURLAP.

NATIVE SOIL DRAINAGE MOUND, COMPACTED TO 92%  
 UNDISTURBED SUBGRADE

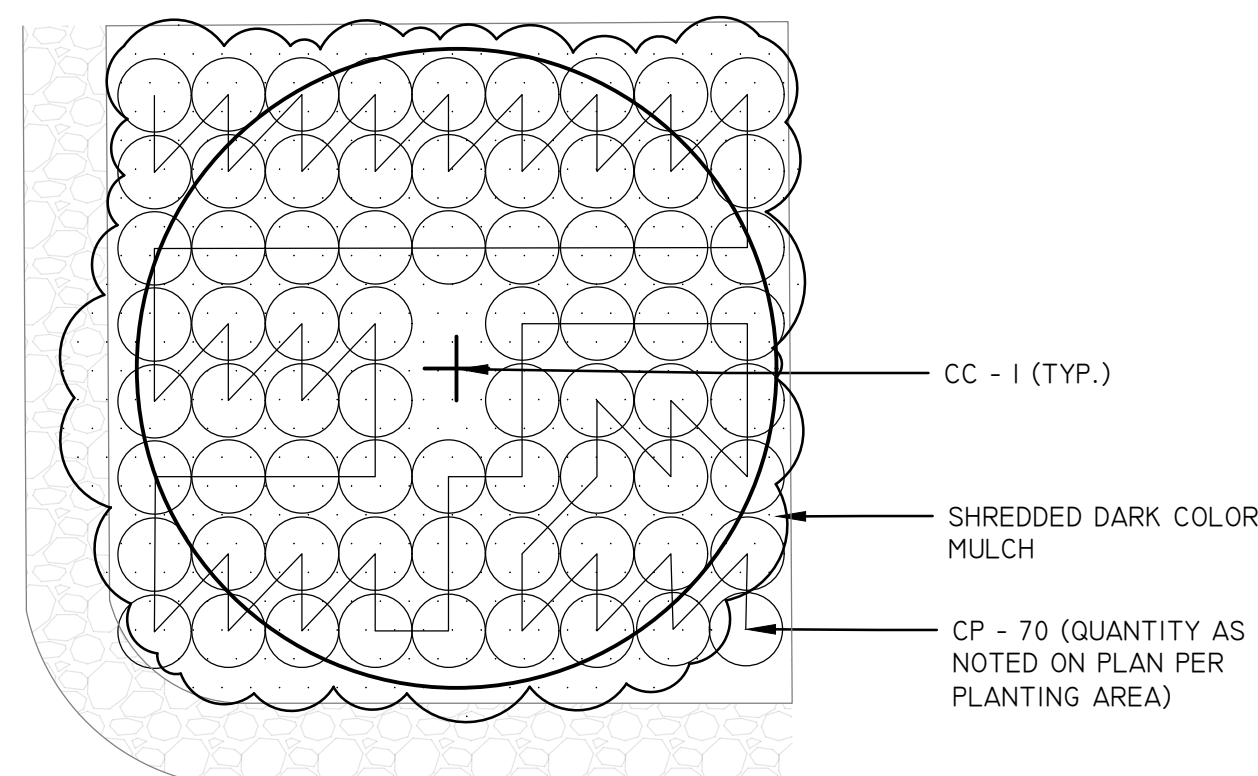
2" TYP.

F.G.

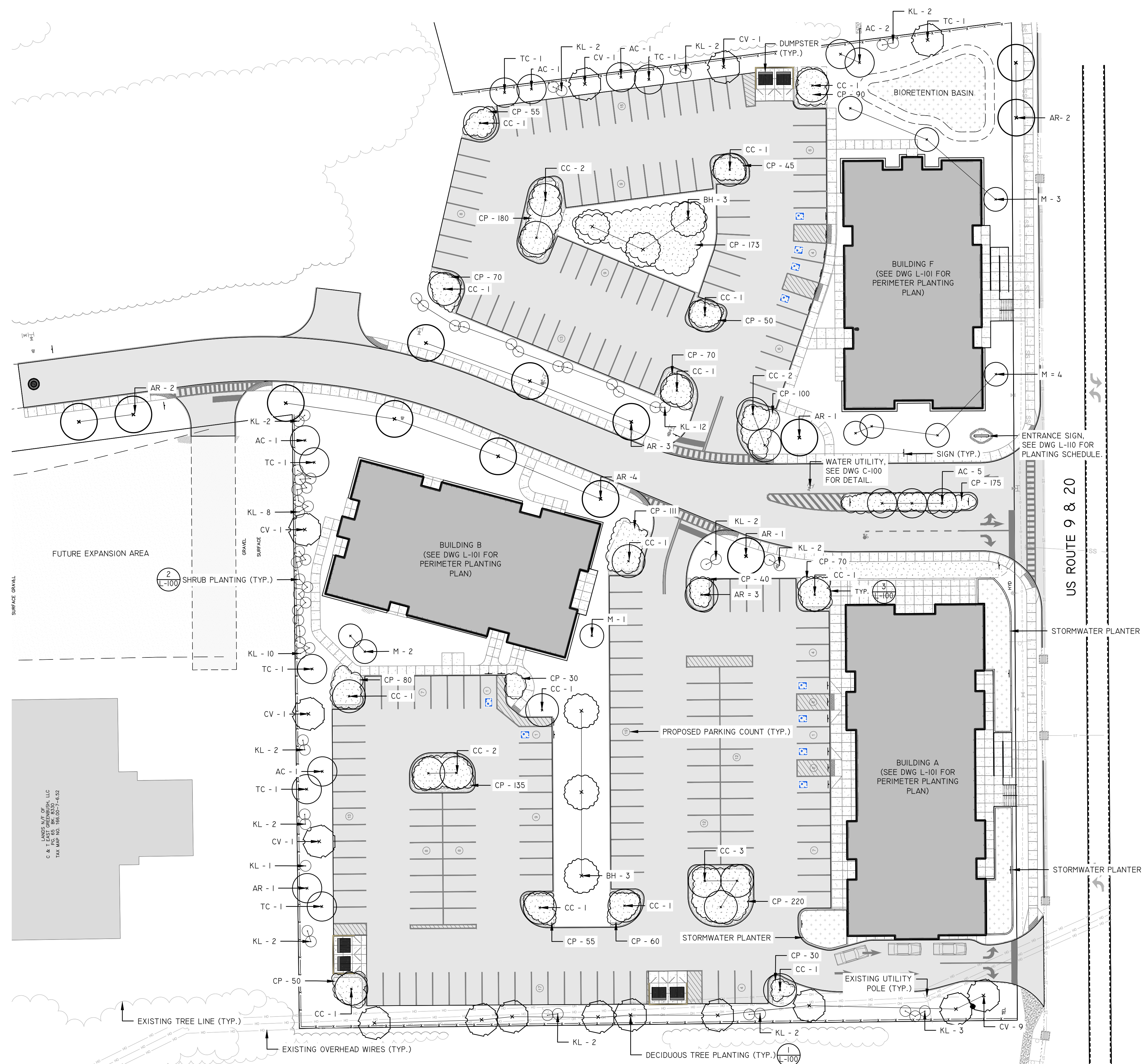
SCALE: N.T.S



SCALE: N.T.S.



SCALE: N.T.S.



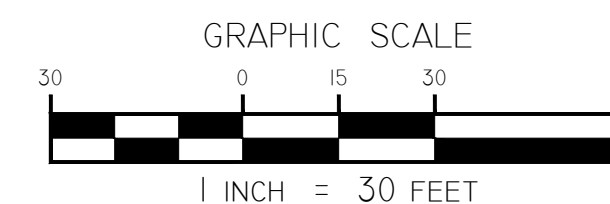
SCALE: 1" = 30'

The diagram illustrates the layout of the study area, showing the locations of various plant types relative to a central area labeled 'COMPTONIA PEREGRINA 'SWEET FERN' PLANTING AREA\*'. The symbols used are:

- PROPOSED TREE\***: Represented by a circle with a '+' sign.
- PROPOSED SHRUB\***: Represented by a small circle with a '-' sign.
- COMPTONIA PEREGRINA 'SWEET FERN' PLANTING AREA\***: Represented by a cloud-like shape filled with a stippled pattern.

The diagram shows several 'PROPOSED TREE\*' symbols located around the perimeter of the 'COMPTONIA PEREGRINA' area, and one 'PROPOSED SHRUB\*' symbol located near the bottom center of the area.

\*SEE PLANTING SCHEDULE FOR VARIETY AND SIZE.



**NOTE:**  
SEE DRAWING C-100 FOR HARDSCAPE  
CONSTRUCTION AND UTILITY DETAIL.

TOWN OF EAST GREENBUSH PLANNING BOARD

NOTE: Unauthorized alteration or addition to this map is a violation of section 7209, sub-division 2 of the New York State Education law.

studioA

---

Landscape Architecture + Engineering, DPC

STREET TREE DOTTED  
AREA AND PARKING LOT  
PLANTING PLAN  
TOWN CENTER PDD  
580 COLUMBIA TURNPIKE  
Town: EAST GREENBUSH County: NYSSELSER State: NEW YORK

Landscape Architect:  
STUDIO A LANDSCAPE ARCHITECTURE  
ENGINEERING, DPC  
Drawn by:  
STUDIO A DPC  
Date Issued:  
DECEMBER 28, 2020  
Scale:  
1" = 30'  
Drawing Number:

-100



