



CDTC/CDRPC Technical Assistance Program

# East Greenbush – Gilligan Road Complete Streets Enhancements Feasibility Study Support

## Town Board

June 9<sup>th</sup>, 2021

# Gilligan Road Complete Streets Enhancements



## Background

### CDTC/CDRPC Community Planning Technical Assistance Program

- Small-scale planning studies to prepare future projects
- Eligible project types include:
  - Comprehensive/Neighborhood Planning
  - Community Design Assessment
  - General Community Planning
  - Land Use Plan Implementation
  - Data Collection
  - Data Analysis and Mapping
  - Recreation Trail Planning
  - Transportation Safety and Operations Planning
  - Zoning and Site Planning

The screenshot shows the CDTC website header with the logo, search bar, and contact information. The navigation menu includes links to About Us, Committees, What We Do, Transportation Plans, Maps & Data, News & Events, and Contact Us. The breadcrumb trail indicates the current location: Home > What We Do > Technical Assistance. The main heading is "Community Planning Technical Assistance Program". The text describes the program's purpose and eligibility criteria. A sidebar on the right contains a red box with a COVID-19 update and links to program guidelines and awards. The footer of the sidebar provides contact information for more details.

**CDTC**  
CAPITAL DISTRICT  
TRANSPORTATION COMMITTEE

Search CDTC

Address : One Park Place Albany, NY 12205-1606  
Phone : (518) 458-2161 | Email: [cdtc@cdtcmpo.org](mailto:cdtc@cdtcmpo.org)

About Us ▾ Committees ▾ What We Do ▾ Transportation Plans ▾ Maps & Data ▾ News & Events ▾ Contact Us

You are here: [Home](#) > [What We Do](#) > [Technical Assistance](#)

### Community Planning Technical Assistance Program

CDTC and the [Capital District Regional Planning Commission \(CDRPC\)](#) are seeking applications for the [2020 Community Planning Technical Assistance Program](#). The program offers CDTC and CDRPC staff time and expertise to local governments undertaking small scale community planning initiatives.

#### Eligible Applicants

Municipalities or municipally convened groups (i.e. appointed committees, planning boards, etc.) within the designated planning area of the CDTC, the four counties of Albany, Rensselaer, Schenectady and Saratoga (except the Village of South Glens Falls and the Town of Moreau) are eligible to apply.

#### How to Apply

If your community is interested in applying, you must contact CDRPC and CDTC to discuss your request. Send an email to [techassist@CDRPC.org](mailto:techassist@CDRPC.org) or call 518-458-2161 and provide your name, phone number and a time convenient for representatives to call you.

#### Local Match Requirement

A cash or in-kind match contribution of not less than 25% of the actual project cost is required.

Due to COVID-19, additional applications for planning technical assistance will be accepted on a rolling basis through December 2020.

[2020 Program Guidelines](#)  
(Updated July 2020)

[2020 Awards](#) (as of May 2020)

Email CDTC and CDRPC or call 518-458-2161 for more information.

[www.cdtcmpo.org/what-we-do/technical-assistance](http://www.cdtcmpo.org/what-we-do/technical-assistance)

# Gilligan Road Complete Streets Enhancements

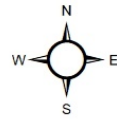


## Scope of Work:

- **Literature Review** – review of prior planning efforts
- **Existing Conditions Assessment** – including:
  - Vehicle movement
  - Pavement condition
  - Intersection geometry
  - Bike/ped facilities
  - Safety assessment
- **Identification of potential alignments**
- **Complete Streets and Neighborhood Connections Concepts**

## Gillilgan Road - Study Area

Gilligan Road Complete Streets Enhancements Feasibility Study Support



### Study Area Overview:

- 4600 ft long (0.87 mile) local roadway
- US-9 & 20 (“Columbia Turnpike”) at northern terminus
- Hays Road at southern terminus



# Gilligan Road Complete Streets Enhancements



## Prior planning efforts:

- East Greenbush Traffic Safety Committee Meeting (2005)
  - Examined issues relating to Gilligan Rd, including speed limits and school zones, following 2004 student-involved crash
- Town of East Greenbush: Land Use Plan and Zoning Study (2006)
  - Plan notes Gilligan Road area being converted to residential land use; notes 9 & 20 as intersection of safety concern
- Town of East Greenbush Amenities Plan (2017)
  - Recommended action: create a sidewalk linking Goff Middle School to Columbia Turnpike and the Albany-Hudson Electric Trail
- Town of East Greenbush Complete Streets Policy (2019)
  - "...to recognize bicyclists and pedestrians as equally important as motorists in the planning and design of all new street construction and street reconstruction undertaken by the Town".



# Gilligan Road Complete Streets Enhancements

## Prior planning efforts:

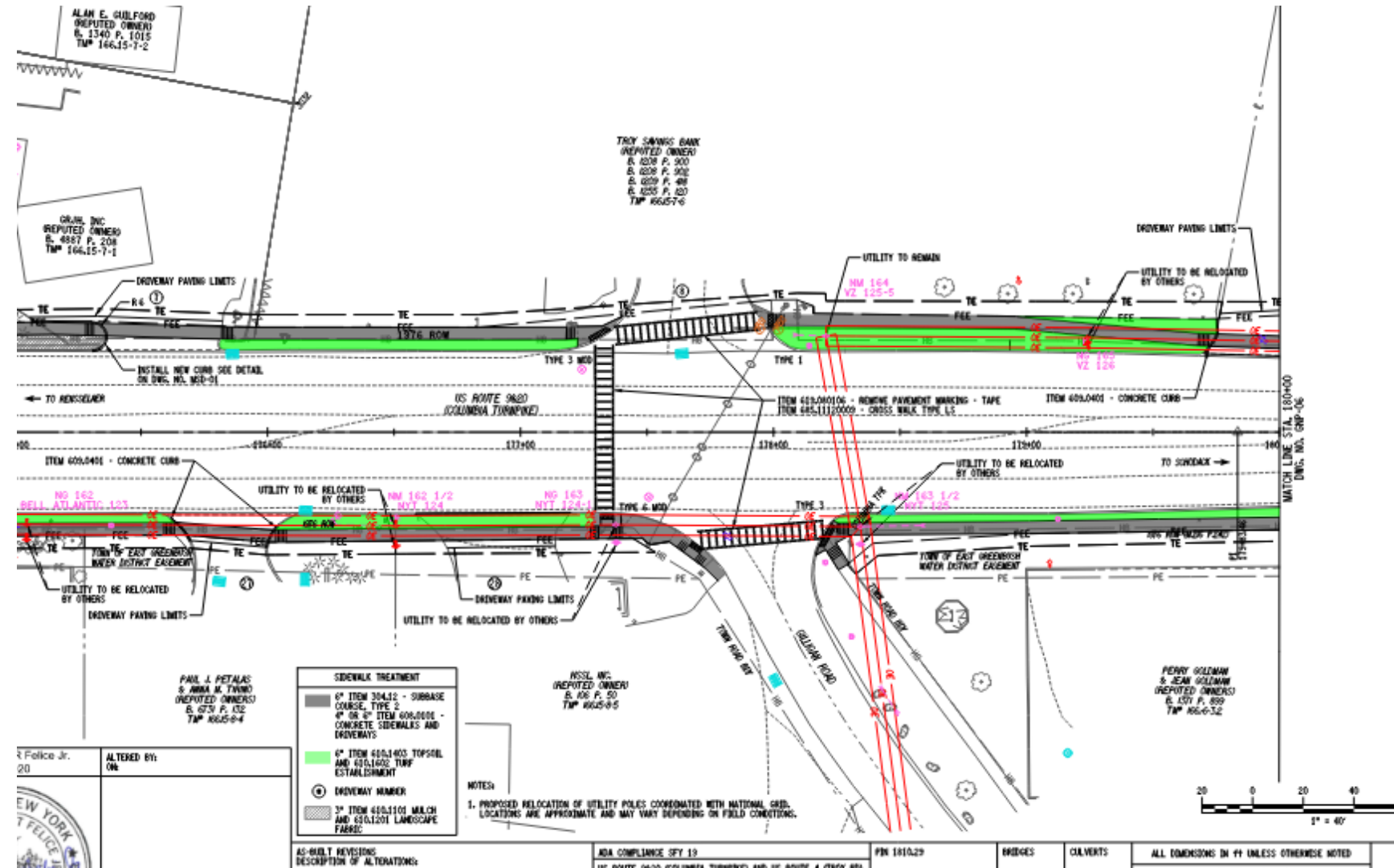
- Town of East Greenbush Complete Streets Implementation Workshop (2018)
  - Concept: 10-foot sidepath
  - Crosswalks at Ternan Ave.
  - Attendees noted that bike/ped improvements "are desperately needed" along Gilligan Road
  - Attendees noted student safety as a concern



# Gilligan Road Complete Streets Enhancements

## Ongoing projects:

- TIP Project: ADA Compliance on NY 4 and NY 9/20 (2019-2024)
  - ADA and crosswalk improvements

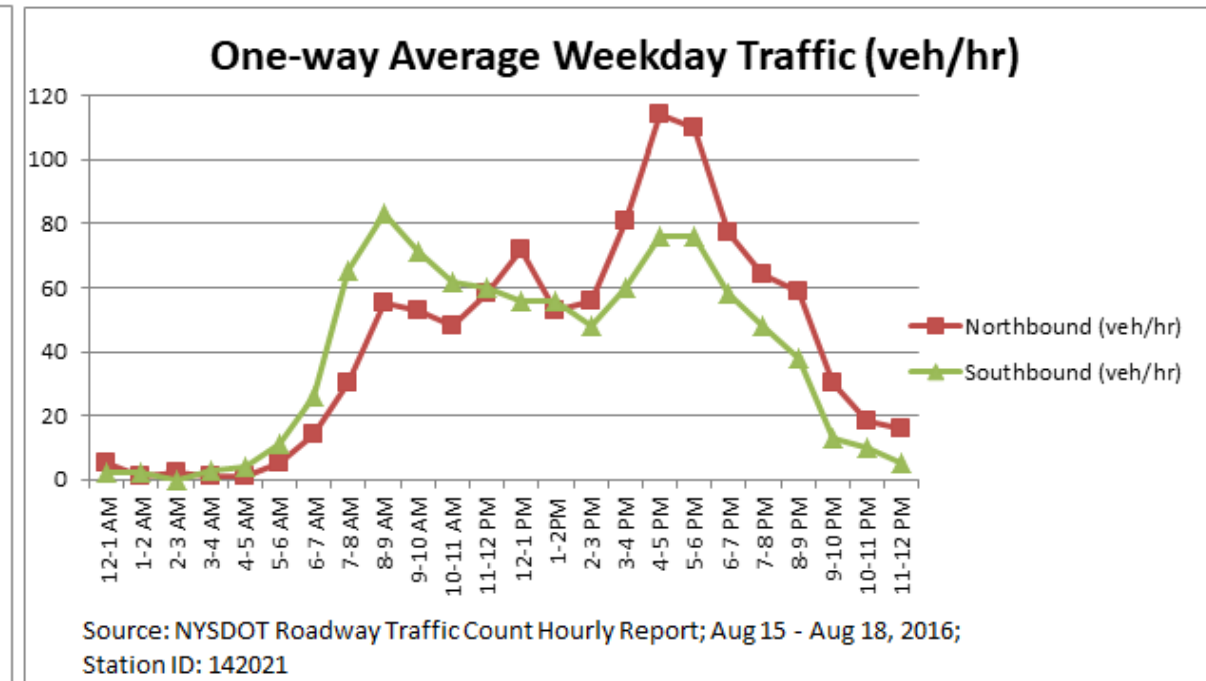
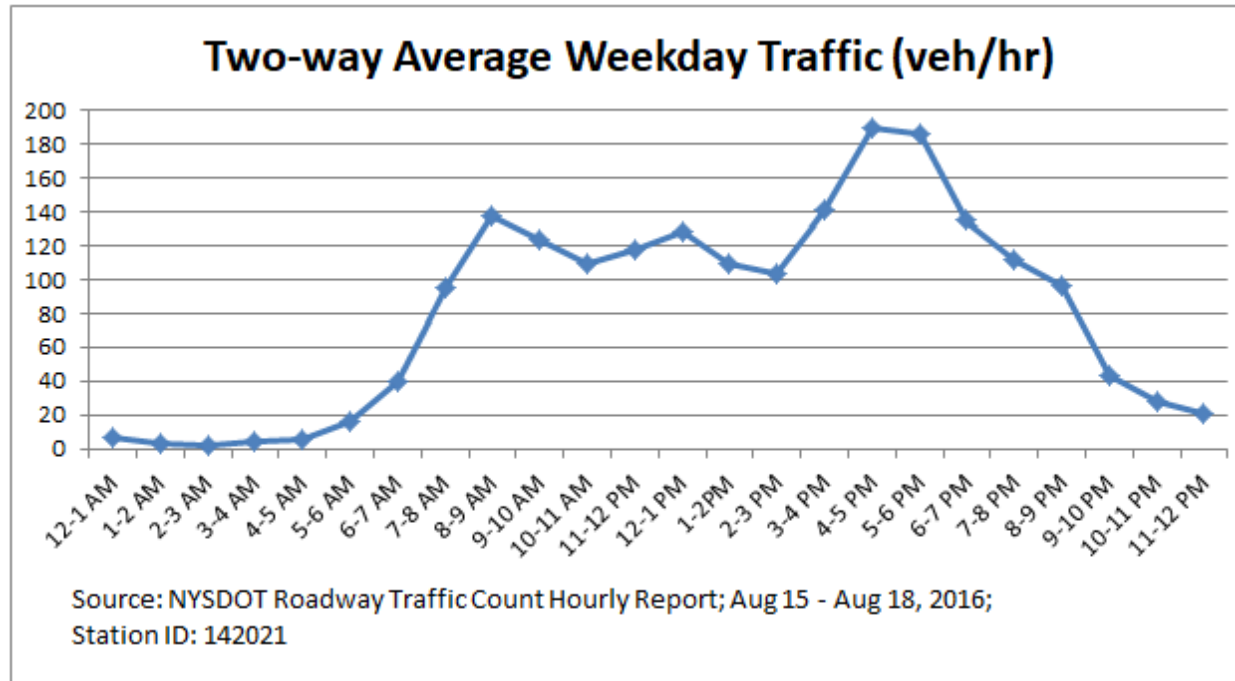


# Gilligan Road Complete Streets Enhancements



## Existing Conditions:

- Vehicle movement
  - NYSDOT Traffic Data Viewer (2016): 1,899 veh/day





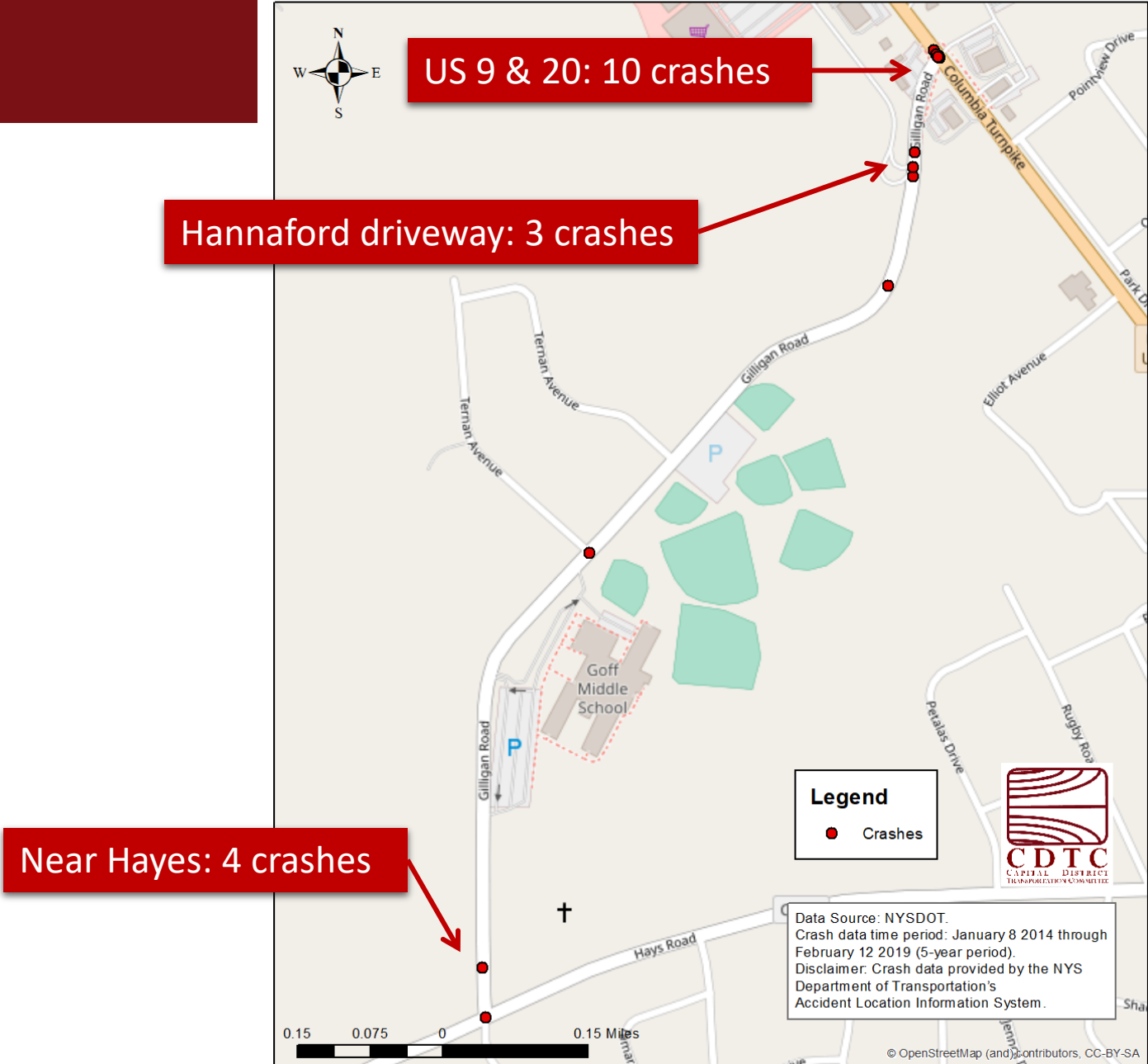
# Gilligan Road Complete Streets Enhancements



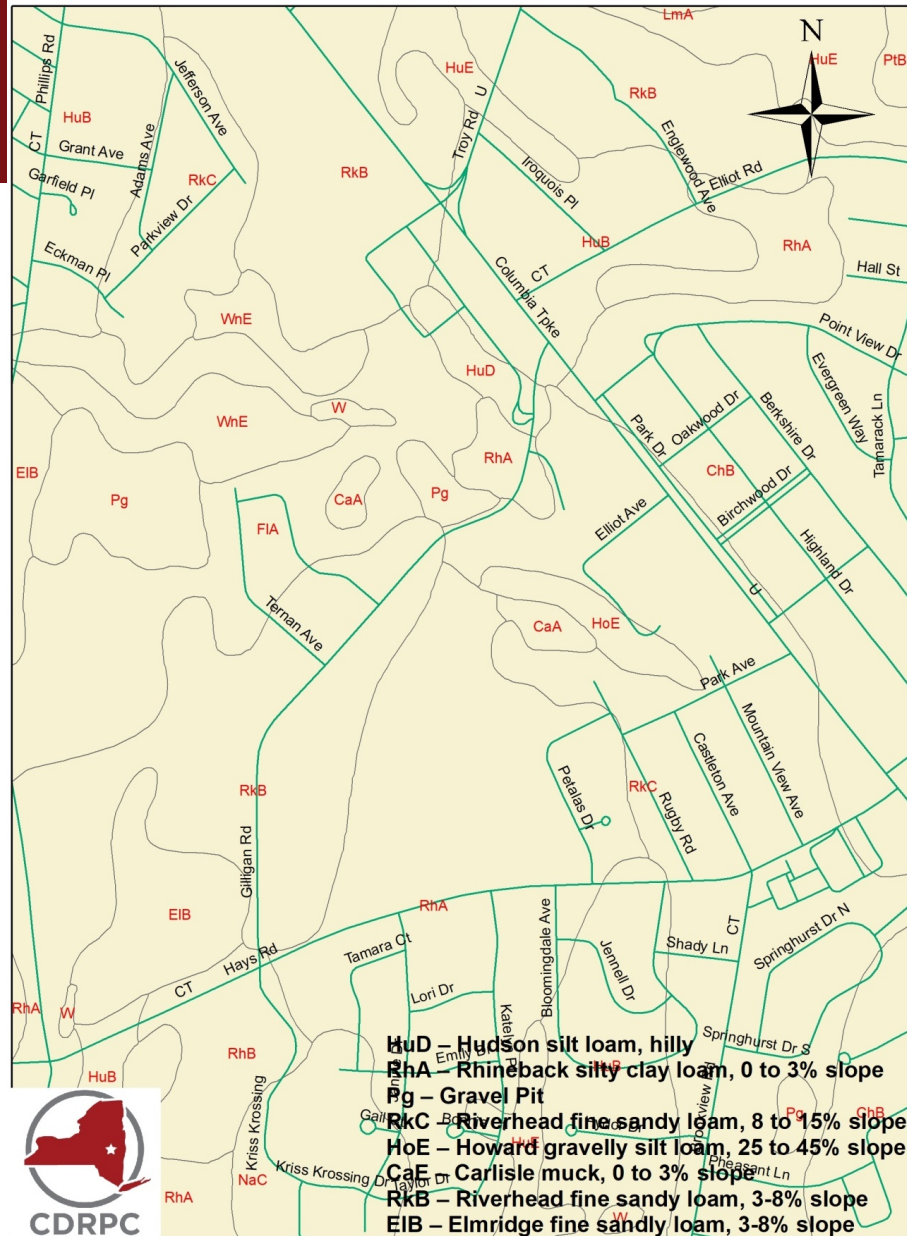
## Safety:

- Crash analysis
  - Crash data was pulled for a 5-year period from 2014 to 2019 using the NYSDOT Accident Location Information System.
  - 19 crashes reported:
    - 10 crashes occurred at the intersection with Columbia Turnpike (US-9 & 20)
    - 3 crashes occurred in the vicinity of the Hannaford Plaza driveways
    - 1 crash occurred on the horizontal curve south of Greenbush Terrace
    - 1 crash occurred at the southern intersection of Gilligan and Ternan
    - 4 crashes occurred in the vicinity of Hays Road
  - 15 crashes between motor vehicles; 3 crashes with deer; 1 with snow embankment
  - **October 26, 2004:** student crossing Gilligan Road was struck by a vehicle near the southern intersection with Ternan Ave and Goff Middle School; student was injured

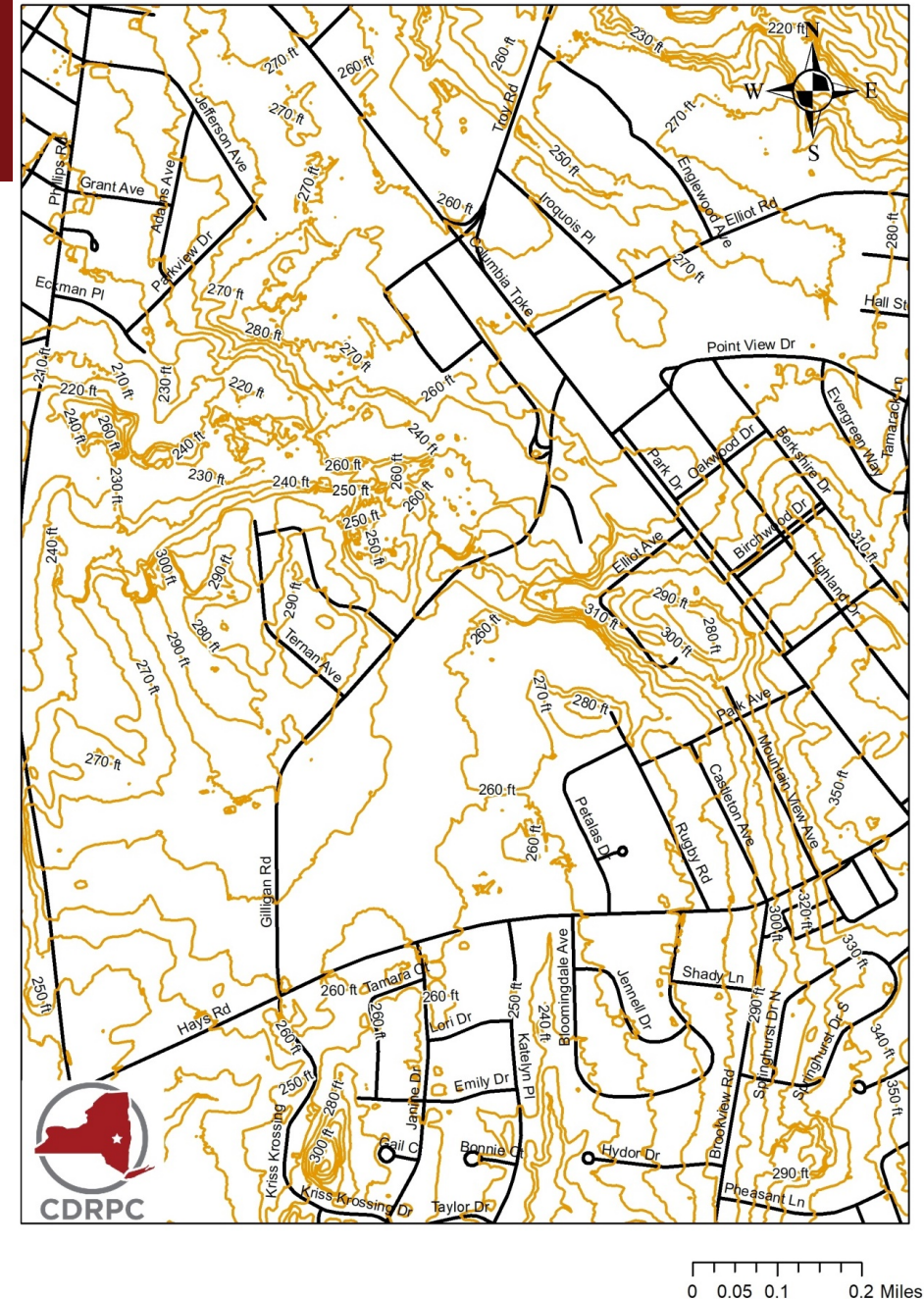
Crash Locations - Gilligan Road, East Greenbush



## Gilligan Road Soil Composition



## Gilligan Road 10ft Contours



# Gilligan Road Complete Streets Enhancements



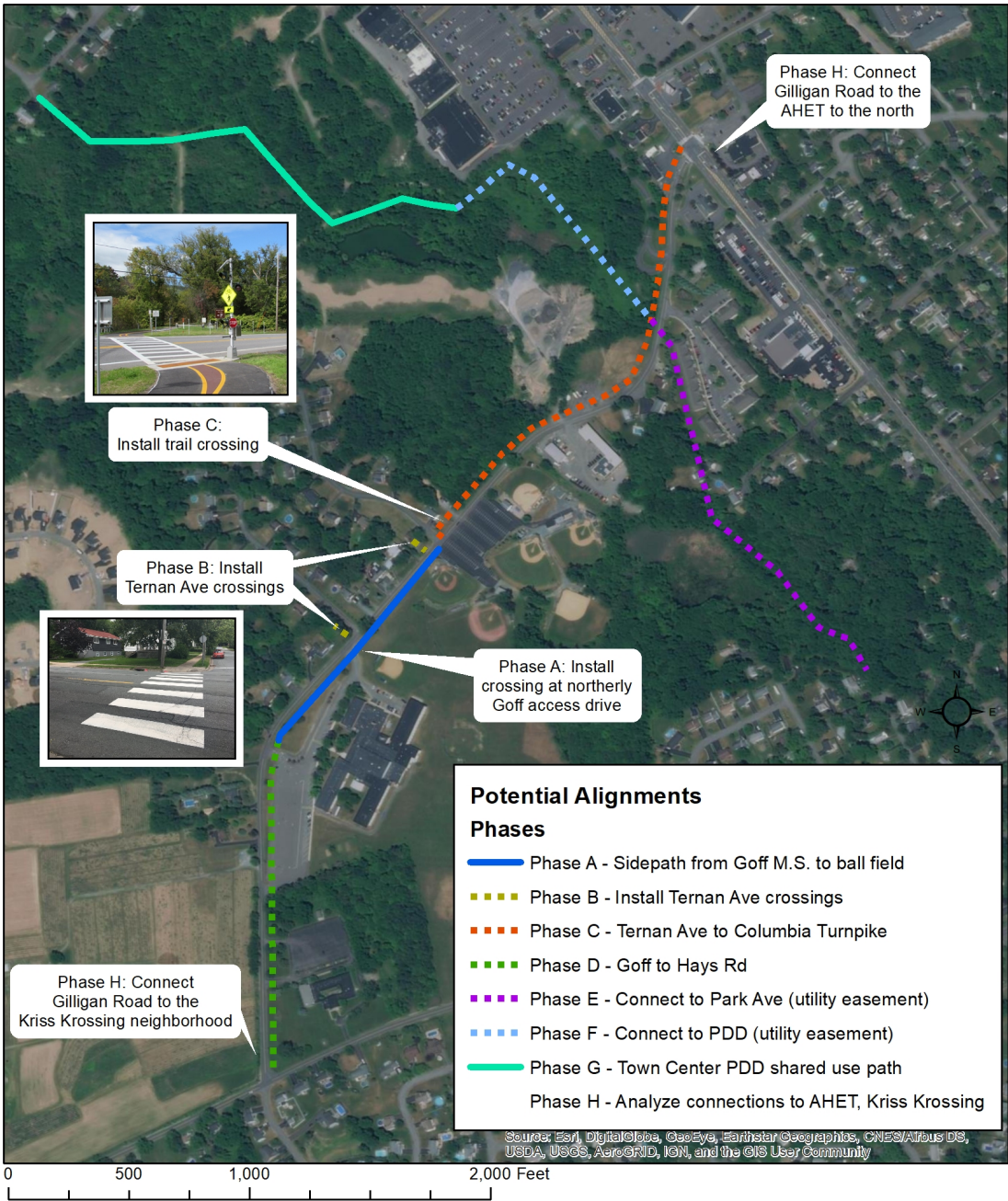
## Complete Streets and Neighborhood Connections Concepts

- Potential Alignments
  - Phase 1: Connect Goff Middle School to Little League Fields (900 feet)
  - Phase 1: Crosswalks at Ternan Ave intersections
  - Future Phases:
    - Connection north to US 9 & 20 and AHET
    - Connection to 580 Columbia Turnpike PDD (apartments and commercial)
    - Connections to neighborhoods via sewer easements
    - Connection south to Hays Road



# Gilligan Road - Potential Trail Alignments

Gilligan Road Complete Streets Enhancements Feasibility Study Support

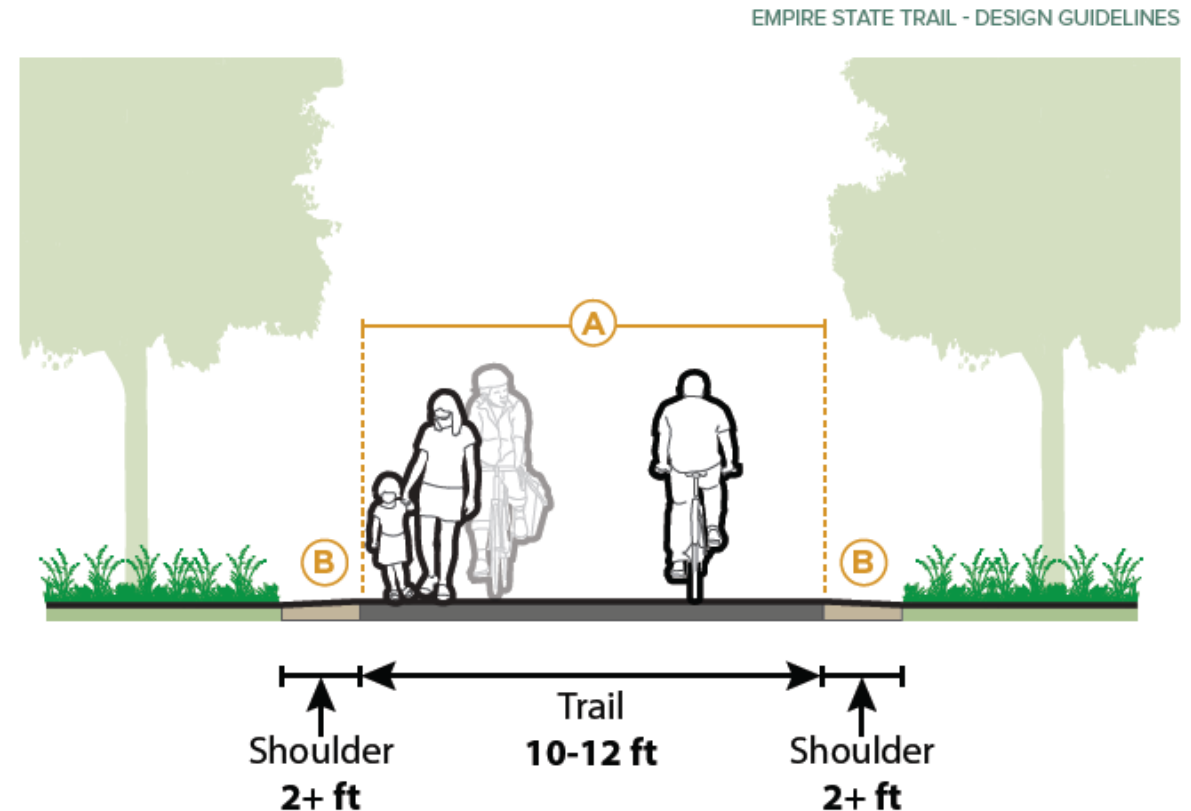


# Gilligan Road Complete Streets Enhancements



## Complete Streets and Neighborhood Connections Concepts

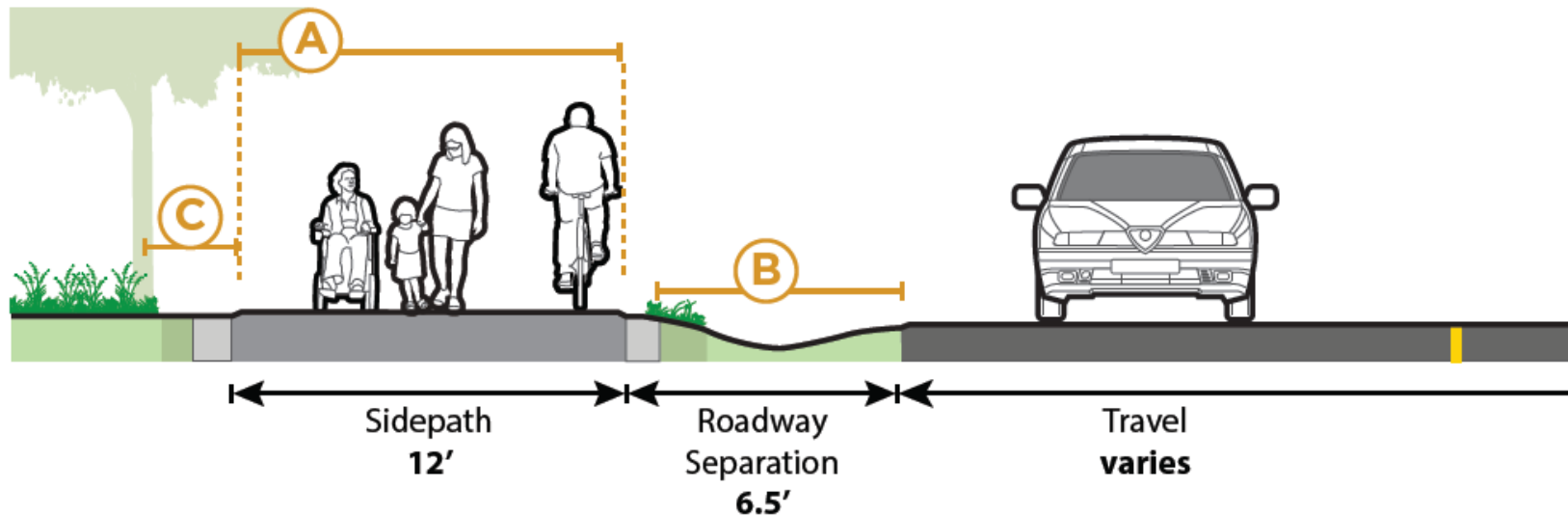
- Separated shared-use sidepaths:
  - Bicycles and pedestrians
  - Separate from motorized traffic
- Sidepath Design:
  - Standard width: 12 feet
  - Shoulders: 2+ feet
  - Grade: less than 5% recommended



Source: Empire State Trail Design Guide, p. 5-14

# Gilligan Road Complete Streets Enhancements

## EMPIRE STATE TRAIL - DESIGN GUIDELINES



*Source: Empire State Trail Design Guide, p. 5-14*

- In constrained conditions: sidepath may be accommodated at roadway grade with the use of a marked buffer area or physical barrier

# Gilligan Road Complete Streets Enhancements



## Complete Streets and Neighborhood Connections Concepts

- Sidepath trail crossing:
  - Per FHWA STEP (Safe Transportation for Every Pedestrian):
  - **High-visibility crosswalk markings**
  - **In-street signage**
  - **Advance yield or stop sign and markings**
  - **Improved nighttime lighting**
  - **Rectangular Rapid Flashing Beacons (RRFB) or Pedestrian Hybrid Beacon (PHB)**



Source: FHWA STEP



# Gilligan Road Complete Streets Enhancements

Local example: Mohawk Hudson Bike Trail crossing





# Gilligan Road Complete Streets Enhancements

Local example: Mohawk Hudson Bike Trail @ Aqueduct Road (featuring RRFBs):



# Gilligan Road Complete Streets Enhancements

Local example: Railroad Run Trail crossing @ NY-50 (featuring full signal):





# Gilligan Road Complete Streets Enhancements

Local examples: New AHET crossings in East Greenbush



- RRFBs at Elliot Road



- Signalized crossing at Troy Road



# Gilligan Road Complete Streets Enhancements

Sidepath alignment  
from ball fields to Goff  
Middle School (Phase A)



# Gilligan Road Complete Streets Enhancements



## Short Term Next Steps:

- Town Board considers adoption of the Study
- Engineering final design of Ternan Ave crossing treatments

## Implementation Plan:

Action Item	Description	Timeline/ Considerations	Lead Agency	Partner(s)
1.1	Design and construct Phase A	Anticipated construction start 2023	EGCSD	TOEG, East Greenbush Castleton Youth Baseball, East Greenbush Girls Softball League
1.2	Construct Phase B	Dependent on AI #1.0/Phase A	TOEG	EGCSD
2.0	Identify and pursue funding sources for final design and construction of Phases C-F	Ongoing	TOEG	-
3.0	Coordinate with Town Center PDD development with respect to final design and construction of Phase G	Ongoing	TOEG	Town Center PDD Developer, Owner of Hannaford Shopping Plaza (598 Columbia Turnpike)
4.0	Include Study recommendations in the update of the Western East Greenbush Generic Environmental Impact Statement (GEIS)	2022	TOEG	-
5.0	Analyze and plan for potential to enhance connections to the north and south (Phase H)	Can start immediately/ ongoing depending on resources	TOEG	NYSDOT, Rensselaer County Highway Department

# Thank You!



Andrew Tracy  
Senior Transportation Engineer  
[atracy@cdtcmpo.org](mailto:atracy@cdtcmpo.org)